

BREEZE

AT CREEK BEACH



EMAAR

ABOUT EMAAR



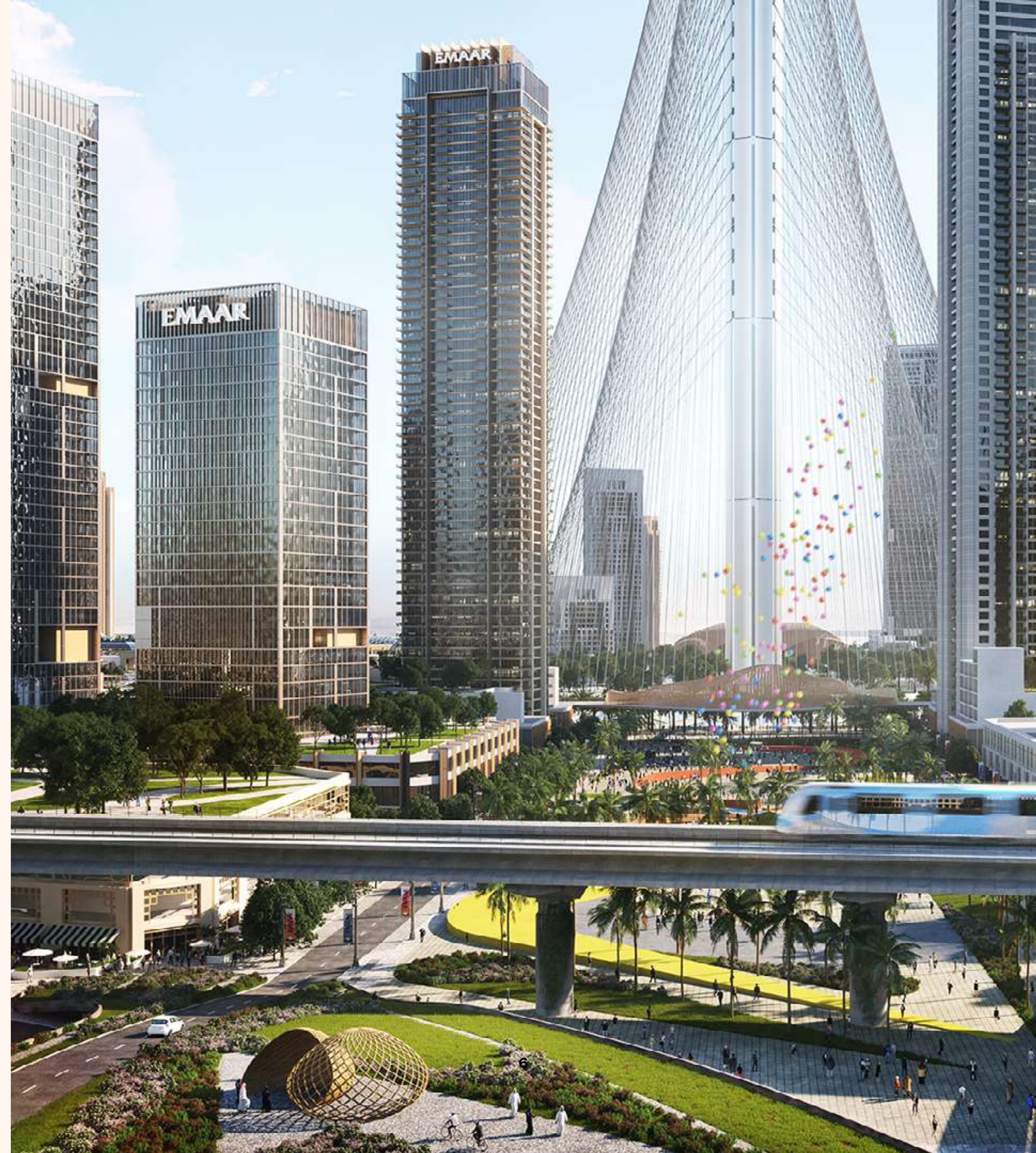
We are the UAE's premier real estate developer.

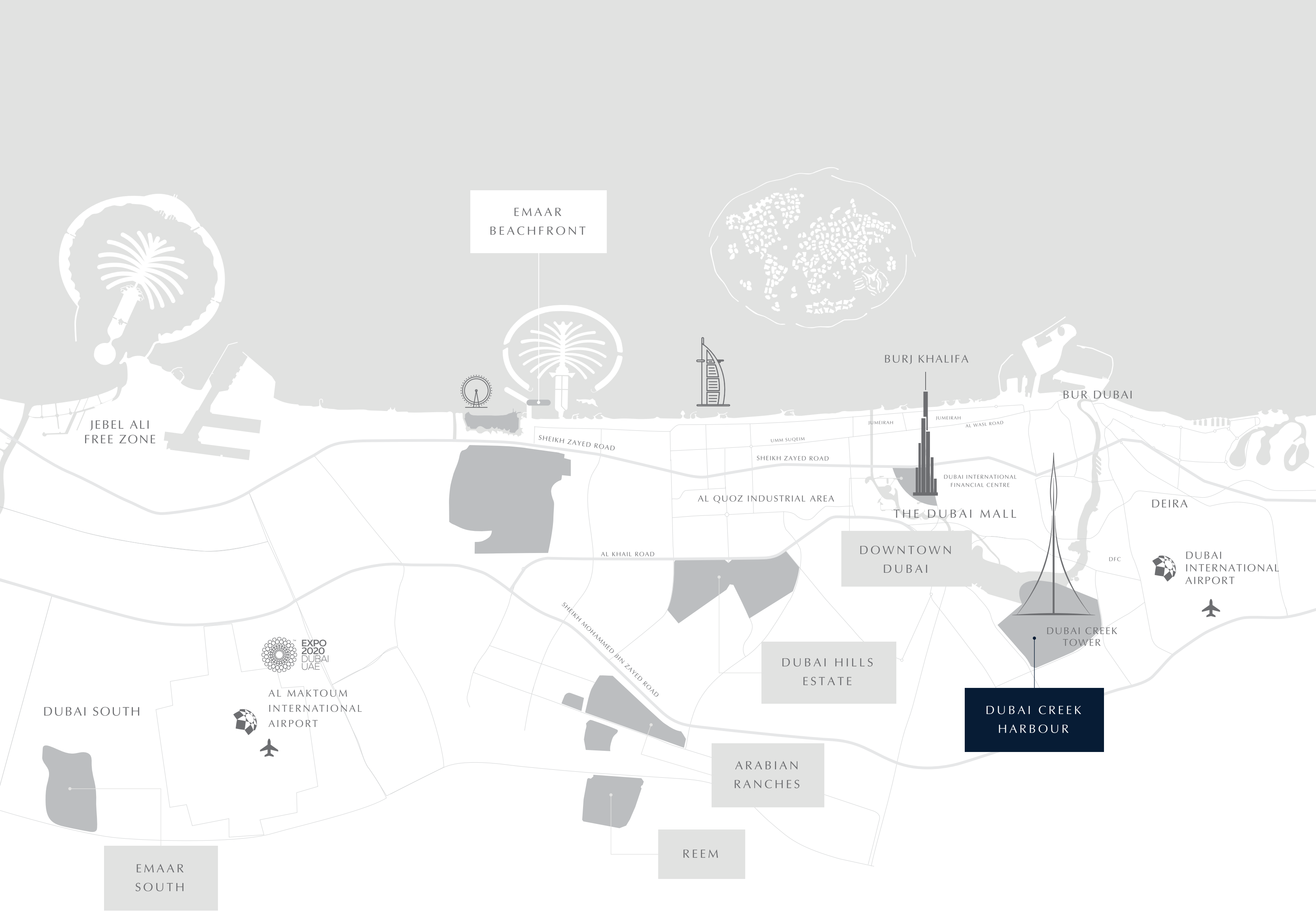
We have reshaped Dubai's skyline with our iconic buildings, integrated lifestyle communities and record-breaking retail and entertainment destinations. While many claim epic projects, very few can count true icons in their portfolio, such as Burj Khalifa, The Dubai Mall and The Dubai Fountain.

By focusing on creating long-term value for our consumers since 1997, we have set the standard of UAE real estate, by which others follow. Today, we are one of the most valuable developers in the world and the largest real estate company outside China.

The World of Tomorrow

Dubai Creek Harbour is at the heart of our bold new vision for Dubai. The six-square-kilometre waterfront destination (three times the size of Downtown Dubai) is destined to push the frontiers in design, architecture and quality of life. In the heart of it is Dubai Creek Tower, a new beacon for the global audiences.





KEY FACTS ABOUT DUBAI CREEK HARBOUR



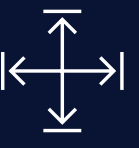
940,000
Sq m Retail Space GFA



Preservation of
450
Animal Species



200,000
Residential Population



550
Hectares GFA



71,399
Sq m Serviced Apartments



5,800 / 24
Keys / Hotels



10
Minutes to
Dubai Int'l Airport



10
Minutes to
Burj Khalifa/Downtown Dubai



INTRODUCING
CREEK BEACH
DUBAI CREEK HARBOUR



Where the city meets the beach

Discover the best of both urban and beach experiences in the most coveted locale of Dubai, Dubai Creek Harbour. Stretching along the glimmering canal that runs between the island and mainland, Creek Beach is conceived to afford you the ultimate family-friendly retreat. Up to 300 metres of pristine white sands to infinity pool to spectacular sunset views, this is paradise reborn.







Ideal Location

Designed to nourish the soul, the Creek Beach district is a pedestrian-friendly sanctuary nestled between Creek Island Dubai and Dubai Creek Tower. Enjoy life in this prominent location that seamlessly blends the best waterfront experience with mainland convenience and connectivity.

CREEK BEACH



Private Beach Access

Escape to paradise any day of the week. Indulge in the 300-metre long stretch of immaculate beach and take in the magnificent beauty of Dubai Creek, the cradle of Dubai's history.

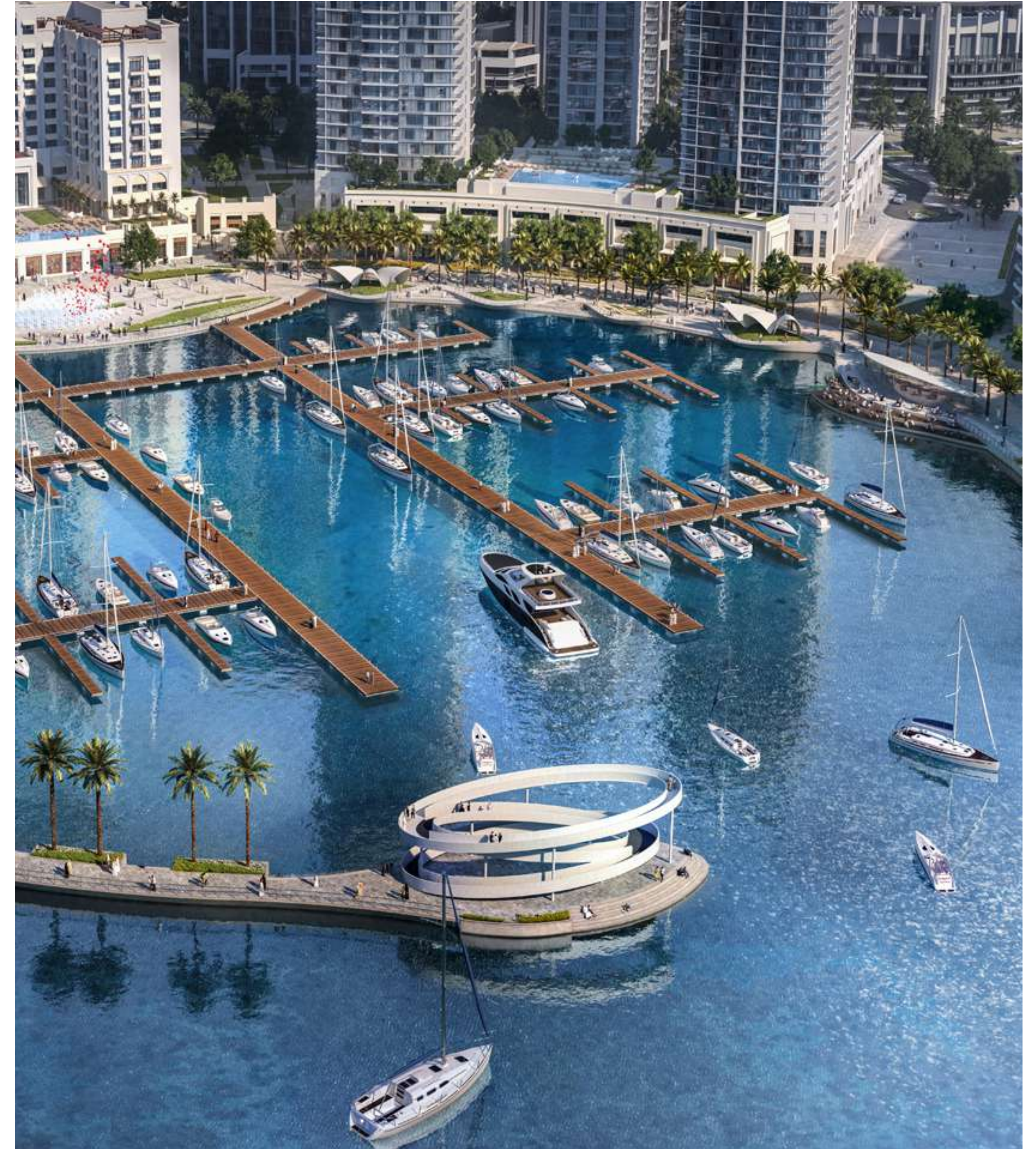
Beautiful Wildlife

Take a scenic ride away and visit the Ras Al Khor Wildlife Sanctuary, one of the few protected urban areas in the world renowned for attracting migratory birds. Marvel at the flocks of pink flamingos or some of the 450 animal species.



The Waterfront, Reimagined

Discover a unique waterfront spectacle that is brimming with leisure, shopping and dining experiences. Take a stroll on the promenade buzzing with cosmopolitan life on beautifully landscaped sidewalks. Take in the spectacular views of Downtown Dubai and the aquatic wonderland all around you.





CREEK MARINA

All-inclusive Waterfront Living

Start the day with a scenic jog alongside the glimmering canal. Stop by for a healthy breakfast at one of the many restaurants near the boardwalk.

Take your family out for a day at the infinity pool and sand mounds and have your little ones splashing around at the shallow kids' pool. For a change of scenery, saunter over to Creek Island and enjoy all things marine at the vibrant Creek Marina.

Dedicated Metro Station

With its very own metro station, the Creek Beach will bring you a new level of convenience and comfort. Imagine living close to water and nature in remarkable surroundings, yet still be able to reach Downtown Dubai or Dubai International Airport within just a few minutes.





DUBAI CREEK TOWER

Dubai Creek Tower

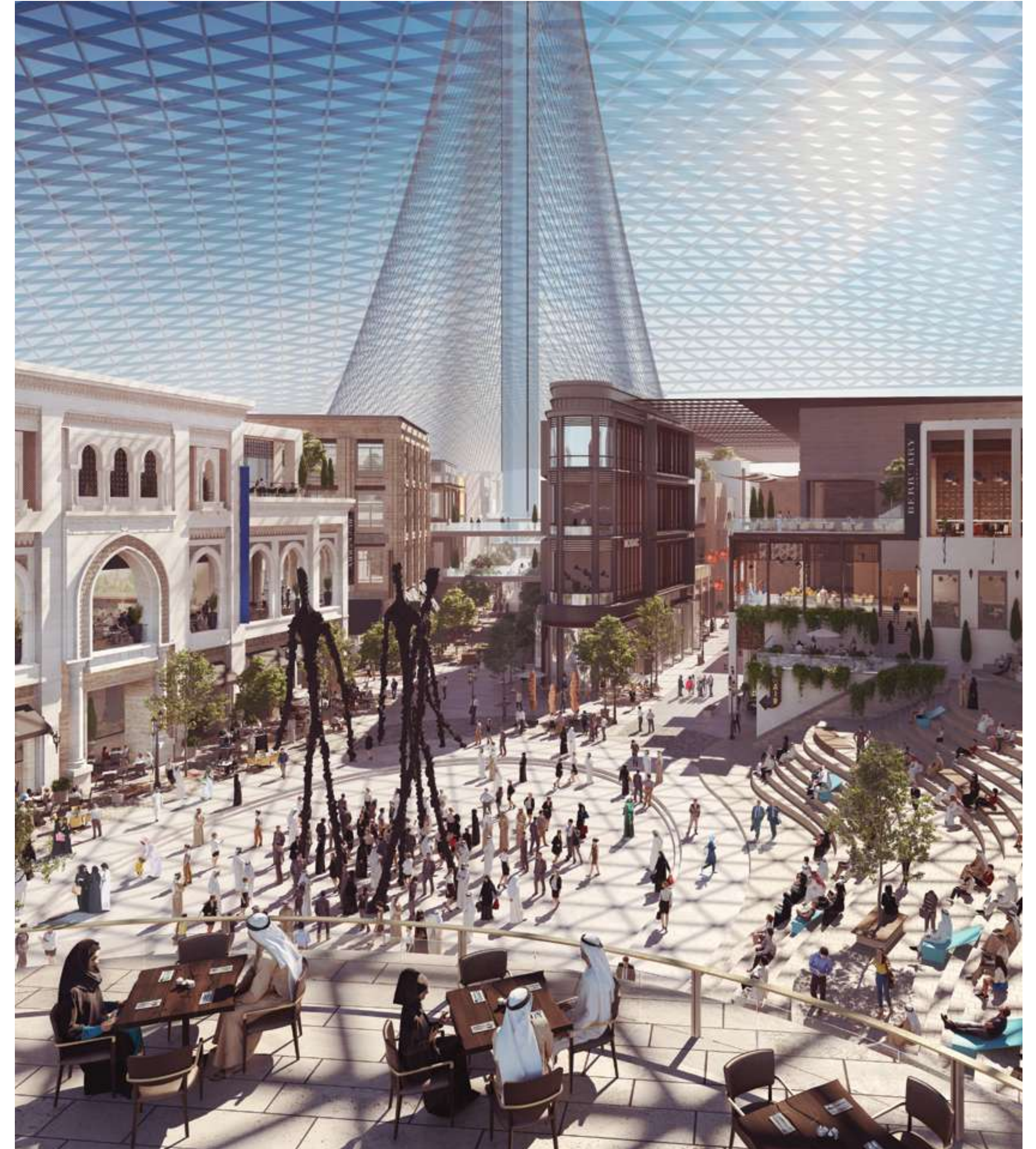
Eclipsing even Burj Khalifa, the world's tallest structure since 2010, the Dubai Creek Tower represents the quintessence of a 21st-century tourist attraction. Only a short walk from your Creek Beach home, it will feature multiple cutting-edge observation decks with 360° views of Dubai Creek Harbour and the metropolis beyond. Millions of tourists will have easy access from Dubai Square to Dubai Creek Tower, and vice-versa.

DUBAI SQUARE

DUBAI SQUARE

DUBAI CREEK HARBOUR

Picture this. A residential, hospitality and retail indoor city with 10,000 residential units, over 1,500 hotel rooms and a 7,500 sq m of retail indulgence. Nestling alongside the Dubai Creek Tower, Dubai Square will bring back the exciting life on city squares and avenues to enrich your shopping experience. On top of that, enjoy the city's new operating system, Dubai Os. This website and app will allow you to shop for any product from Dubai Square seamlessly, in-store or wherever you are worldwide.





Parks and Open Spaces

Whether you're searching for a place to play catch with your little ones, a romantic spot to eat ice-cream, or simply a scenic jogging route, take your pick from one of the district's lush green parks.

VIDA

Premier Licensed Venues by the Beach

Just minutes from your waterfront abode, your local Vida Hotel presents an experience that is alive and inspired. A boutique hotel for the modern traveller, the hotel will further expand the Creek Beach's richly unique offering, with a gym, spa, curated events and much more in the way of leisure and entertainment. Enjoy licensed dining venues that are set to become some of the most talked-about bars and restaurants in Dubai.





VIDA Exhale Spa

Book yourself a treatment in one of Dubai's most luxurious spas. A place where the noise stops to make way for serenity and calm. From generously appointed rooms of baths to the indoor pool to hot, cold and multi-jet pools, this is where you will learn to overindulge. With services that run the gamut from anti-ageing facials to body treatments, Exhale Spa will leave you feeling more radiant than ever.

Smart Home Technology

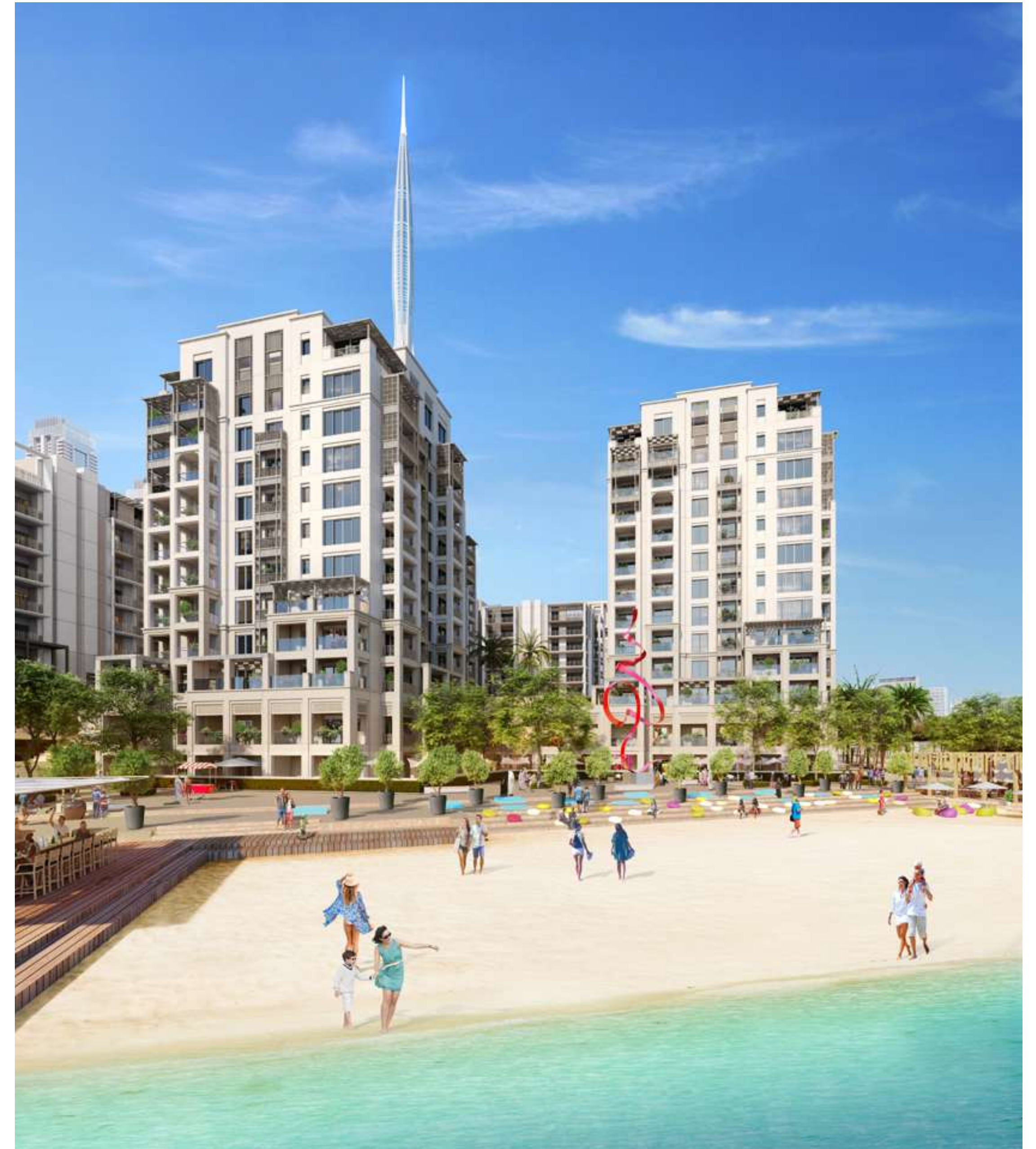
Born out of Emaar's partnership with global blue-chip technology companies, homes in this district are an embodiment of contemporary comfort. Control your home environment and manage your family's security from both within and outside your residence. Order your groceries from integrated e-commerce websites, or hail a taxi using digital voice assistants in your living room or even your smartphone.





BREEZE

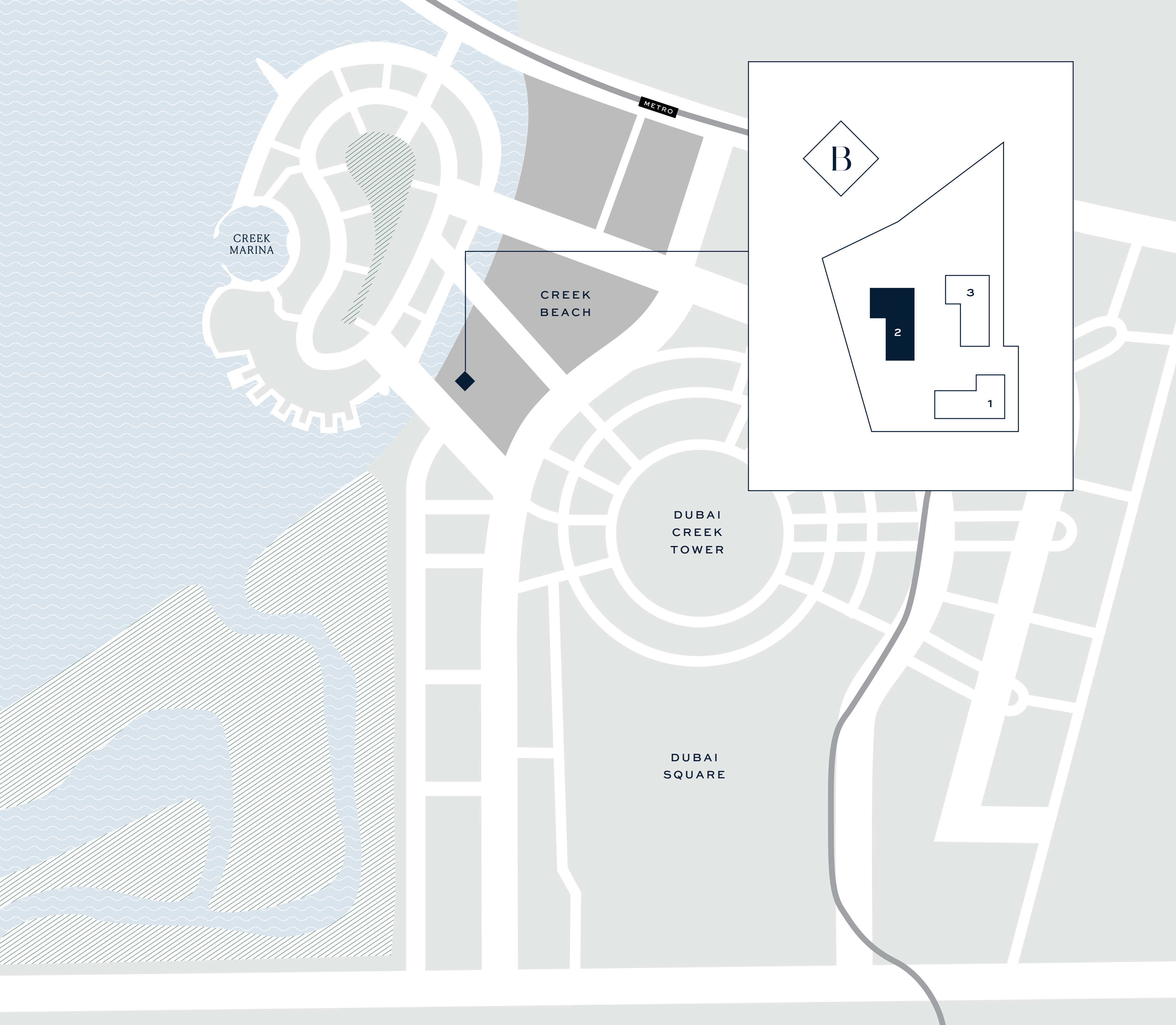
AT CREEK BEACH



ABOUT BREEZE



Tucked away at the corner of Creek Beach is Breeze, a sanctuary for modern families. Live in a charming family community draped in nature just minutes away from the stunning beach, the canal and the marvellous Creek Island Dubai. Breeze comprises three clusters of one to four bedroom apartments drawing from vernacular architecture, each offering a touch of heritage and world-class leisure activities.



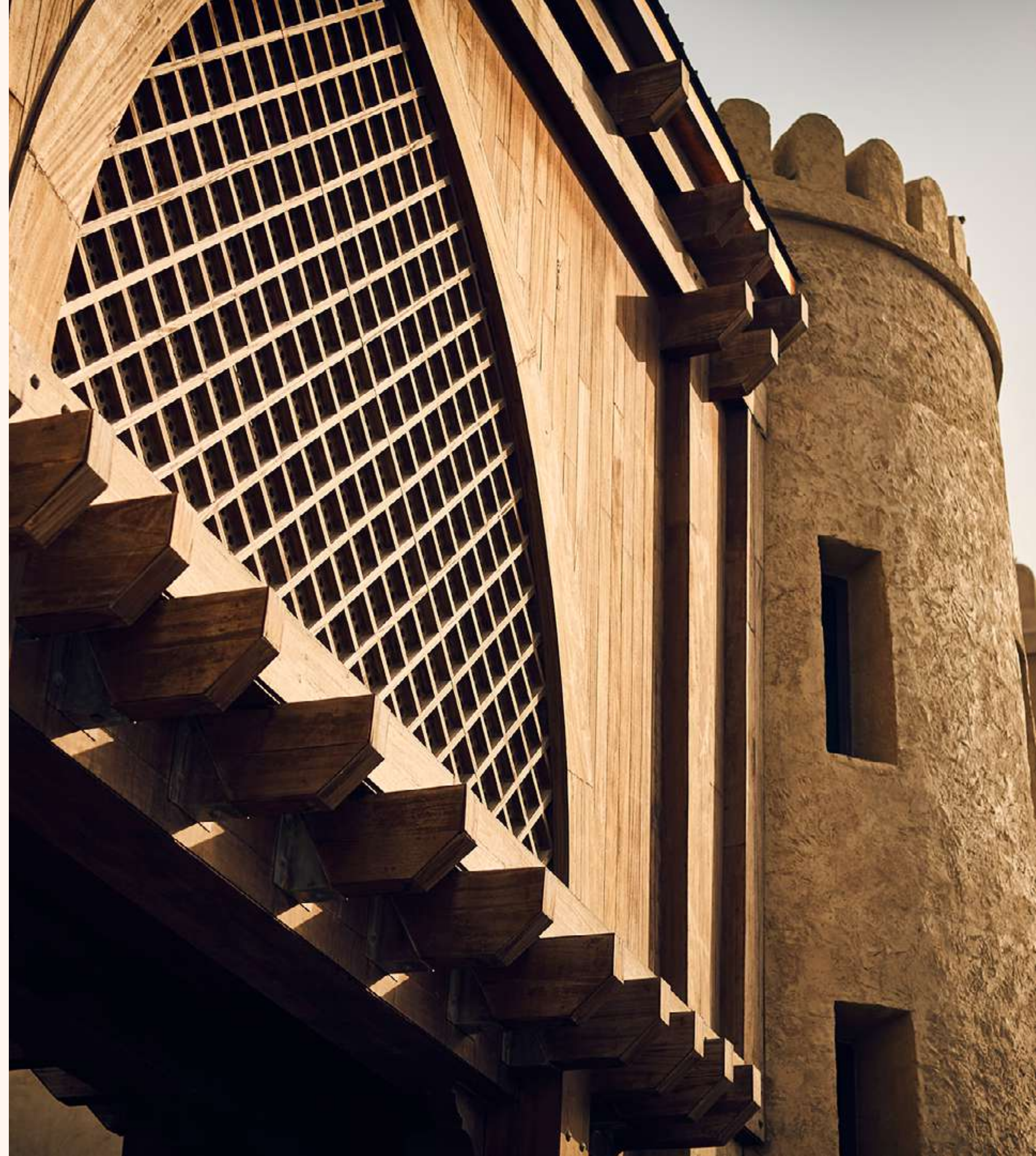
Ideally Connected

Breeze offers a car-free neighbourhood that is safe, quiet and a quick walk away from Dubai Creek Tower, Dubai Square, Creek Marina and Creek Beach. With easy access to Dubai's main roads, all your favourite attractions are just a short drive away.

Merging
heritage

with a

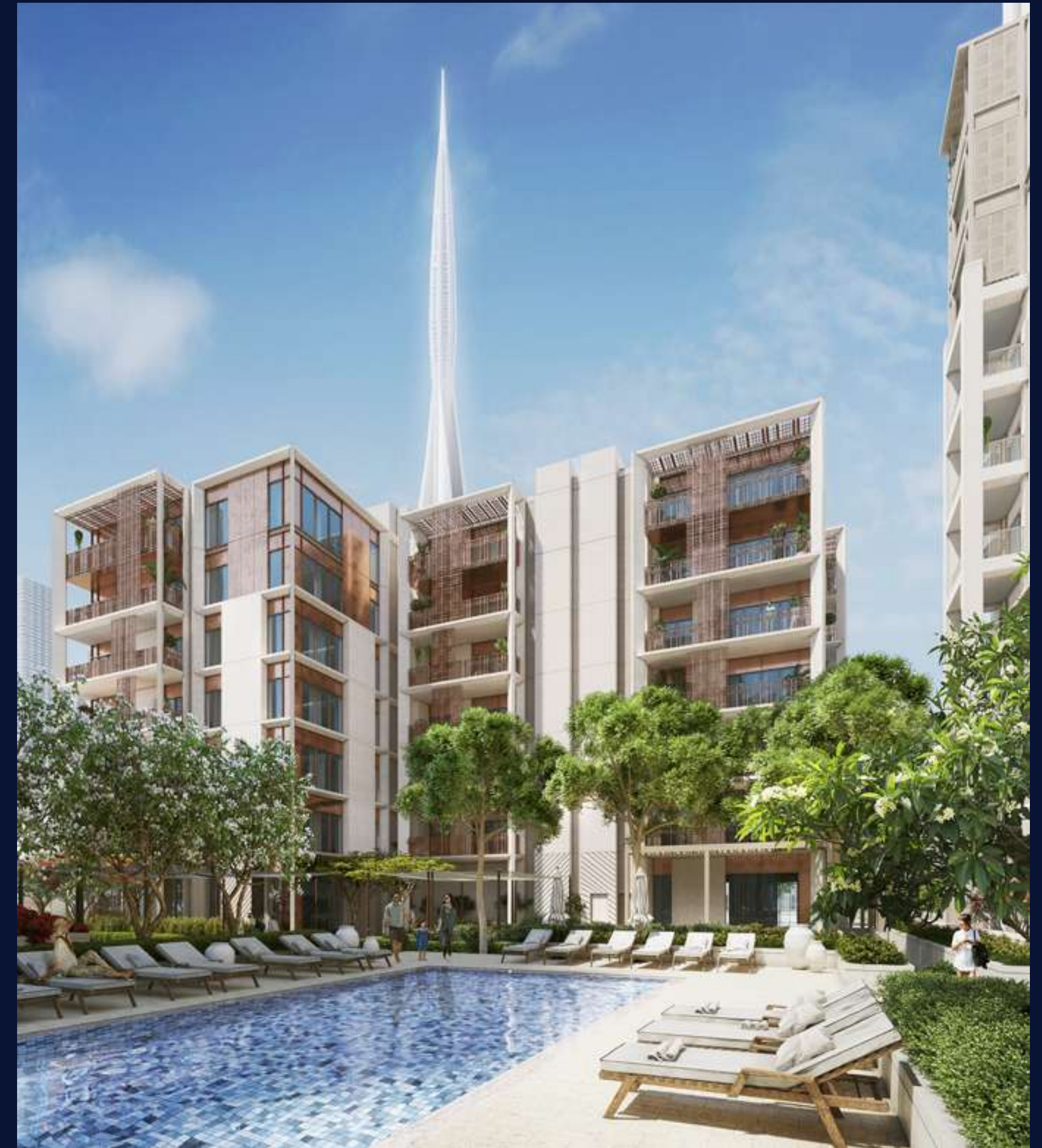
New
Tradition





BREEZE

Wind down from your long work day in a private courtyard. Here, you can relax with your family or enjoy a barbecue with your friends over the weekend. With a private pool, fully equipped gymnasium and lots of room for your children to run and play.



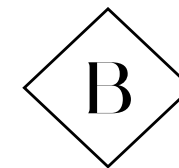




BREEZE

A Statement in Elegance

Apartments at Breeze offer floor to ceiling windows for a light and airy ambience. Enjoy spaciouly designed rooms inspired by traditional Middle Eastern architecture. Beautiful wood panelling is a reflection of the natural scenery with warm tones evoking a sense of comfort and harmony.











✉ info@vision-ary.com ☎ +971 56 402 3276 🌐 www.vision-ary.com