

# DOWNTOWN VIEWS II



# TRADITIONAL TRANQUILITY



MAKE THE  
EXTRAORDINARY  
YOUR HOME



A REFINED  
LIFESTYLE BEYOND  
COMPARE



1 - 3 BEDROOM  
CHIC FAMILY HOMES













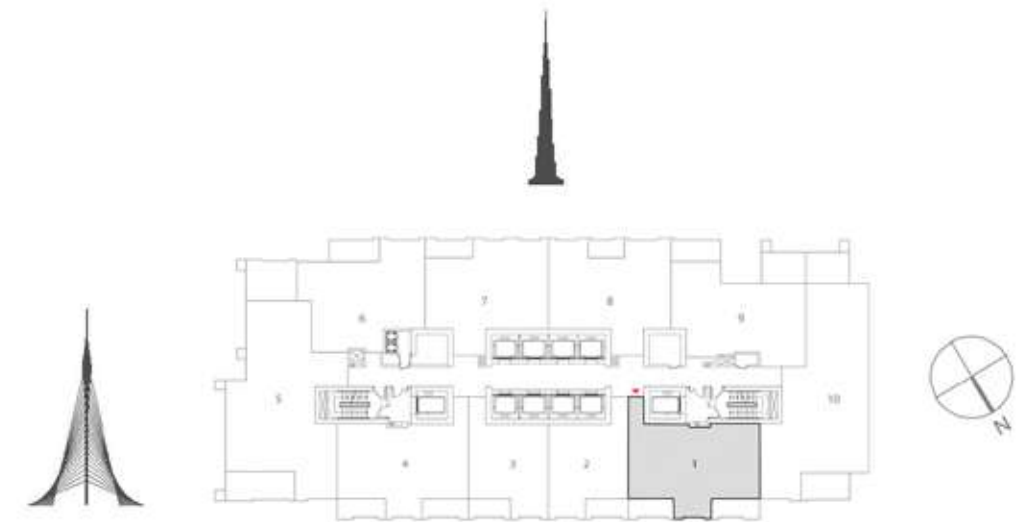
FLOOR PLANS  
TOWER 1



TOWER 1  
2 BEDROOM W/BALCONY  
UNIT 01/ LEVELS 2-15, 17-35



Suite Area	997.38 Sq.ft. / 92.66 Sq.m.
Balcony Area	164.58 Sq.ft. / 15.29 Sq.m.
Total Area	1161.96 Sq.ft. / 107.95 Sq.m.



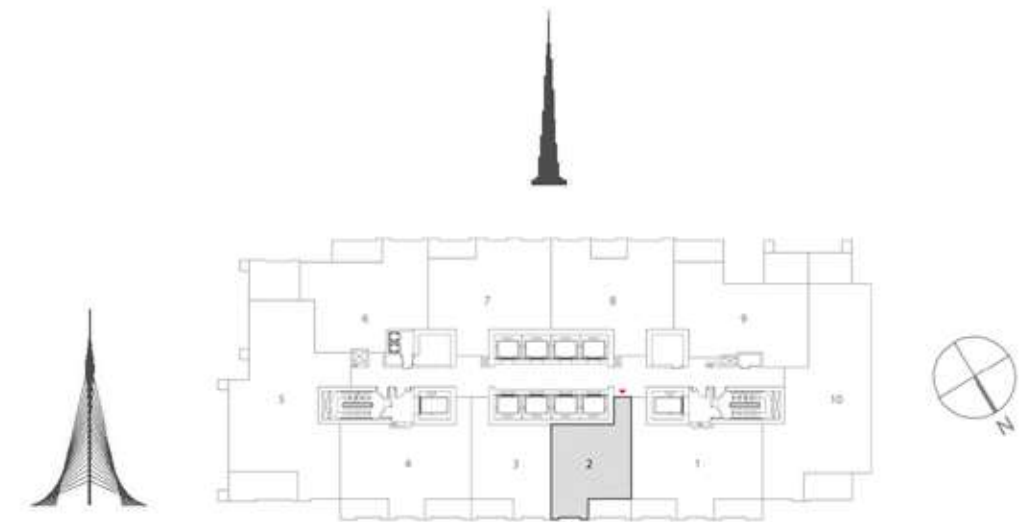
1. All dimensions are in imperial and metric, and measured to structural elements and exclude wall finishes and construction tolerances. 2. All materials, dimensions, and drawings are approximate only. 3. Information is subject to change without notice, at developer's absolute discretion. 4. Actual area may vary from the stated area. 5. Drawings not to scale. 6. All images used are for illustrative purposes only and do not represent the actual size, features, specifications, fittings, and furnishings. 7. The developer reserves the right to make revisions/alterations, at its absolute discretion, without any liability whatsoever.



TOWER 1  
1 BEDROOM W/BALCONY  
UNIT 02/ LEVELS 2-15, 17-35



Suite Area	658.75 Sq.ft. / 61.20 Sq.m.
Balcony Area	76.42 Sq.ft. / 7.10 Sq.m.
Total Area	735.18 Sq.ft. / 68.30 Sq.m.



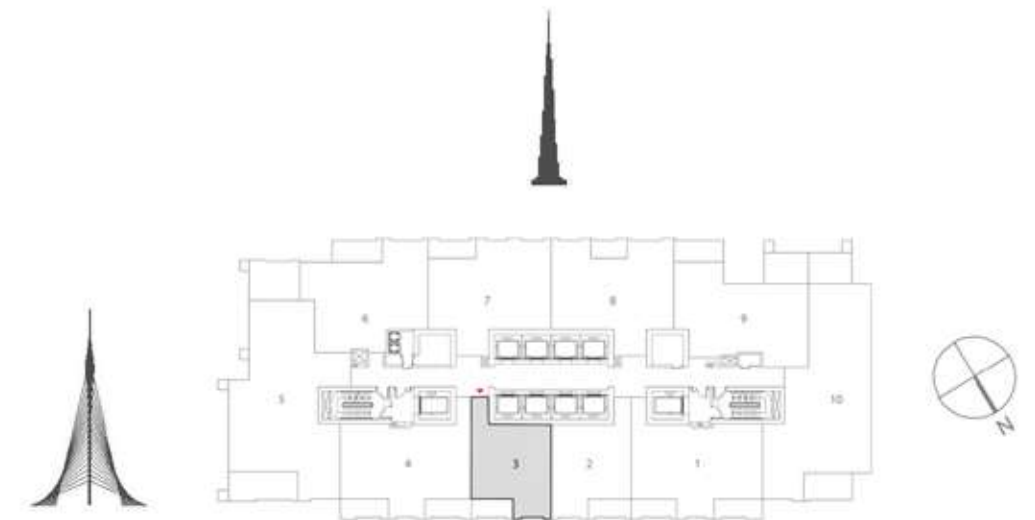
1. All dimensions are in imperial and metric, and measured to structural elements and exclude wall finishes and construction tolerances. 2. All materials, dimensions, and drawings are approximate only. 3. Information is subject to change without notice, at developer's absolute discretion. 4. Actual area may vary from the stated area. 5. Drawings not to scale. 6. All images used are for illustrative purposes only and do not represent the actual size, features, specifications, fittings, and furnishings. 7. The developer reserves the right to make revisions/alterations, at its absolute discretion, without any liability whatsoever.



TOWER 1  
1 BEDROOM W/BALCONY  
UNIT 03/ LEVELS 2-15, 17-35



Suite Area	658.75 Sq.ft. / 61.20 Sq.m.
Balcony Area	76.42 Sq.ft. / 7.10 Sq.m.
Total Area	735.18 Sq.ft. / 68.30 Sq.m.



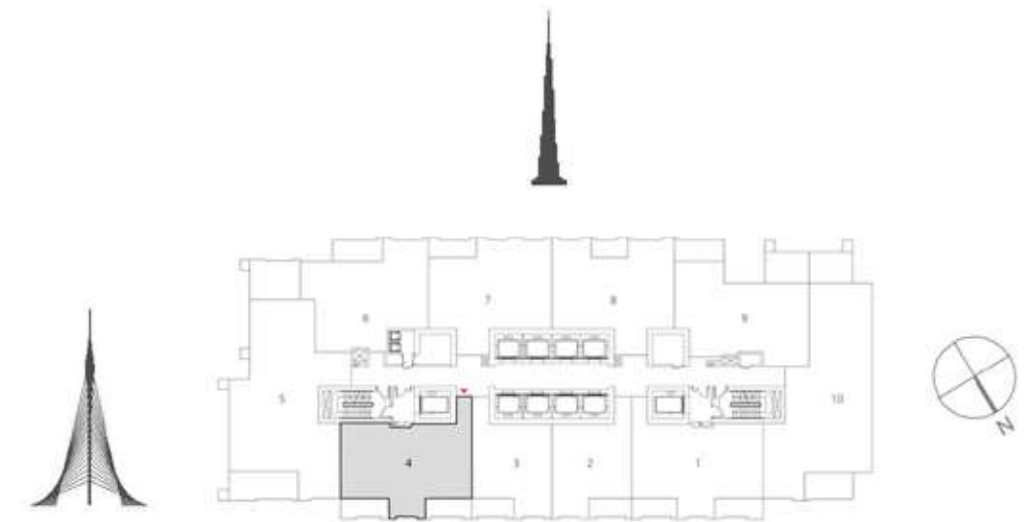
1. All dimensions are in imperial and metric, and measured to structural elements and exclude wall finishes and construction tolerances. 2. All materials, dimensions, and drawings are approximate only. 3. Information is subject to change without notice, at developer's absolute discretion. 4. Actual area may vary from the stated area. 5. Drawings not to scale. 6. All images used are for illustrative purposes only and do not represent the actual size, features, specifications, fittings, and furnishings. 7. The developer reserves the right to make revisions/alterations, at its absolute discretion, without any liability whatsoever.



TOWER 1  
2 BEDROOM W/BALCONY  
UNIT 04/ LEVELS 2-15, 17-35



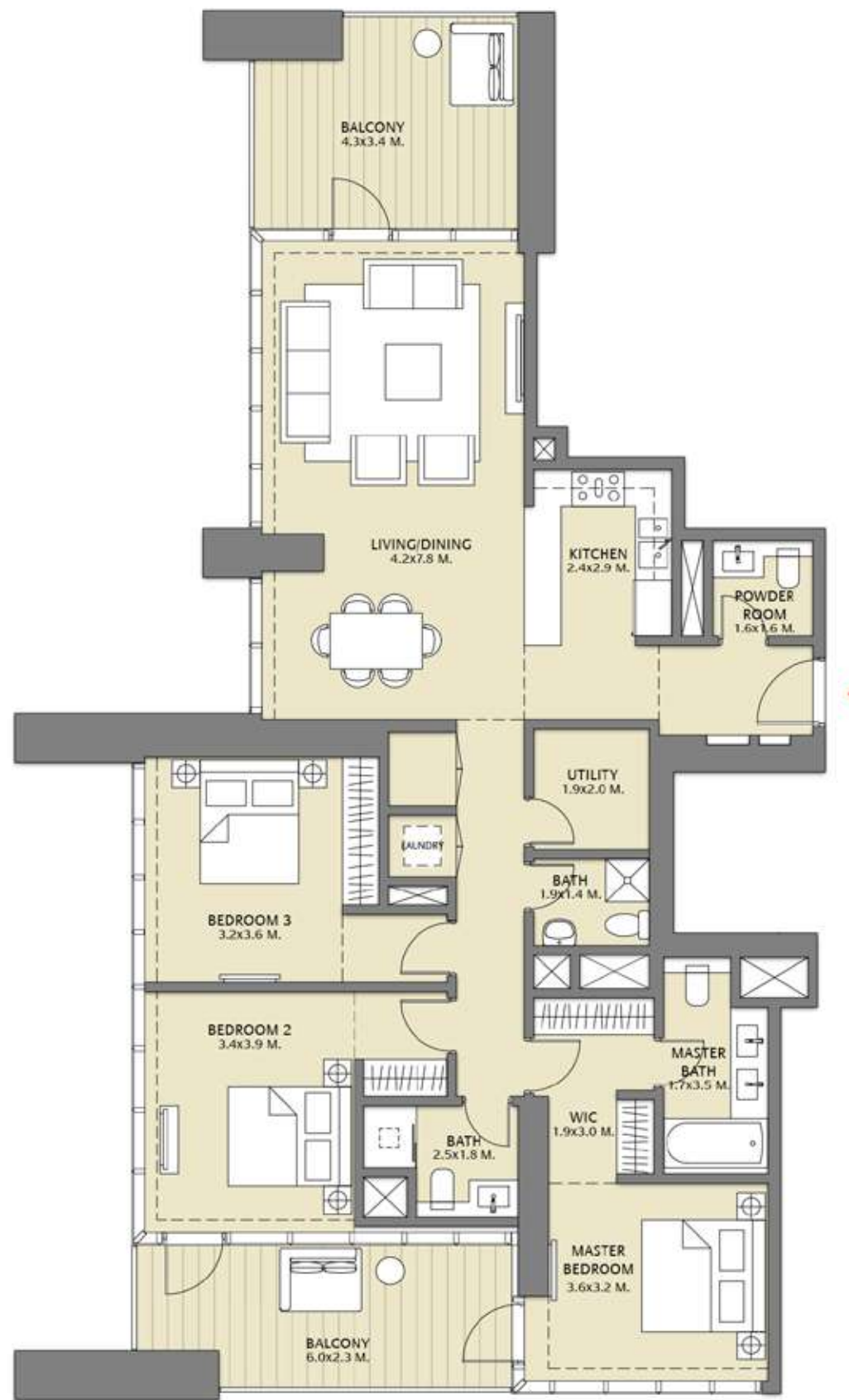
Suite Area	997.38 Sq.ft. / 92.66 Sq.m.
Balcony Area	164.58 Sq.ft. / 15.29 Sq.m.
Total Area	1161.96 Sq.ft. / 107.95 Sq.m.



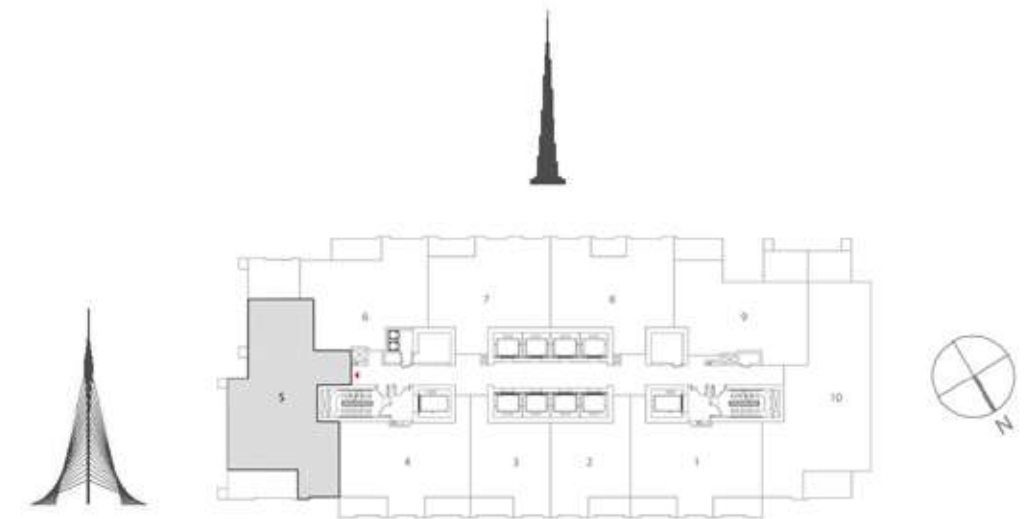
1. All dimensions are in imperial and metric, and measured to structural elements and exclude wall finishes and construction tolerances. 2. All materials, dimensions, and drawings are approximate only. 3. Information is subject to change without notice, at developer's absolute discretion. 4. Actual area may vary from the stated area. 5. Drawings not to scale. 6. All images used are for illustrative purposes only and do not represent the actual size, features, specifications, fittings, and furnishings. 7. The developer reserves the right to make revisions/alterations, at its absolute discretion, without any liability whatsoever.



TOWER 1  
3 BEDROOM W/BALCONY  
UNIT 05/ LEVELS 2-15, 17-35



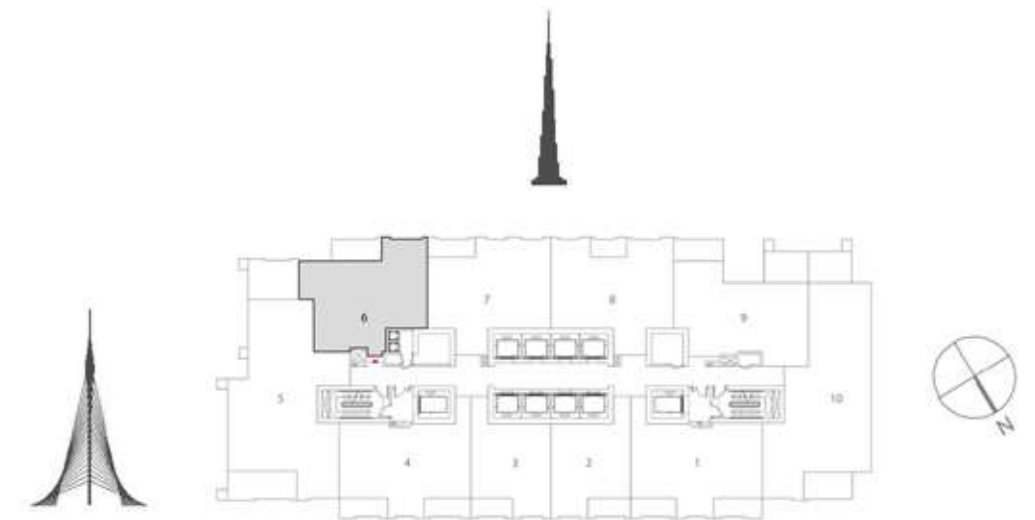
Suite Area	1522.56 Sq.ft. / 141.45 Sq.m.
Balcony Area	329.38 Sq.ft. / 30.60 Sq.m.
Total Area	1851.93 Sq.ft. / 172.05 Sq.m.



TOWER 1  
2 BEDROOM W/BALCONY  
UNIT 06/ LEVELS 2-15, 17-35



Suite Area	1059.06 Sq.ft. / 98.39 Sq.m.
Balcony Area	86.76 Sq.ft. / 8.06 Sq.m.
Total Area	1145.82 Sq.ft. / 106.45 Sq.m.



1. All dimensions are in imperial and metric, and measured to structural elements and exclude wall finishes and construction tolerances. 2. All materials, dimensions, and drawings are approximate only. 3. Information is subject to change without notice, at developer's absolute discretion. 4. Actual area may vary from the stated area. 5. Drawings not to scale. 6. All images used are for illustrative purposes only and do not represent the actual size, features, specifications, fittings, and furnishings. 7. The developer reserves the right to make revisions/alterations, at its absolute discretion, without any liability whatsoever.

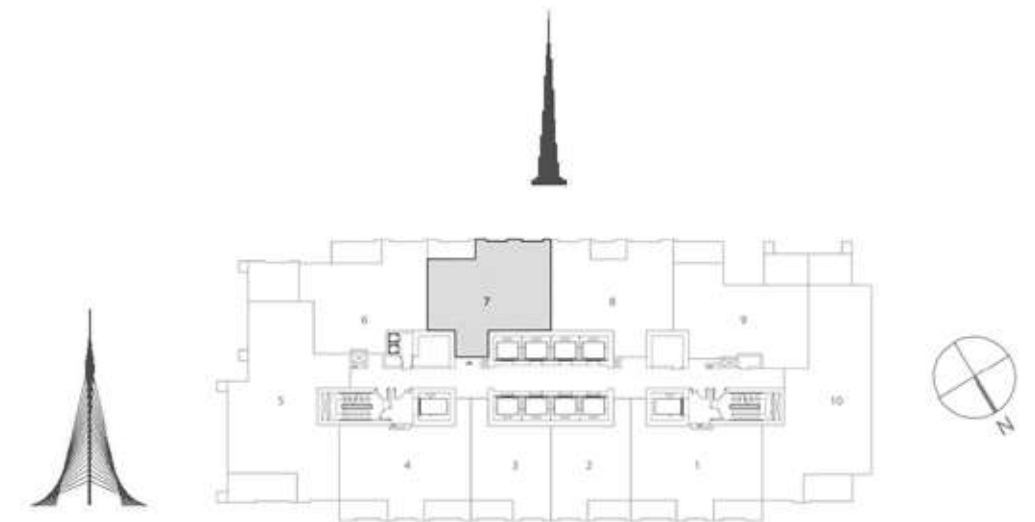




TOWER 1  
2 BEDROOM W/BALCONY  
UNIT 07/ LEVELS 2-15, 17-35



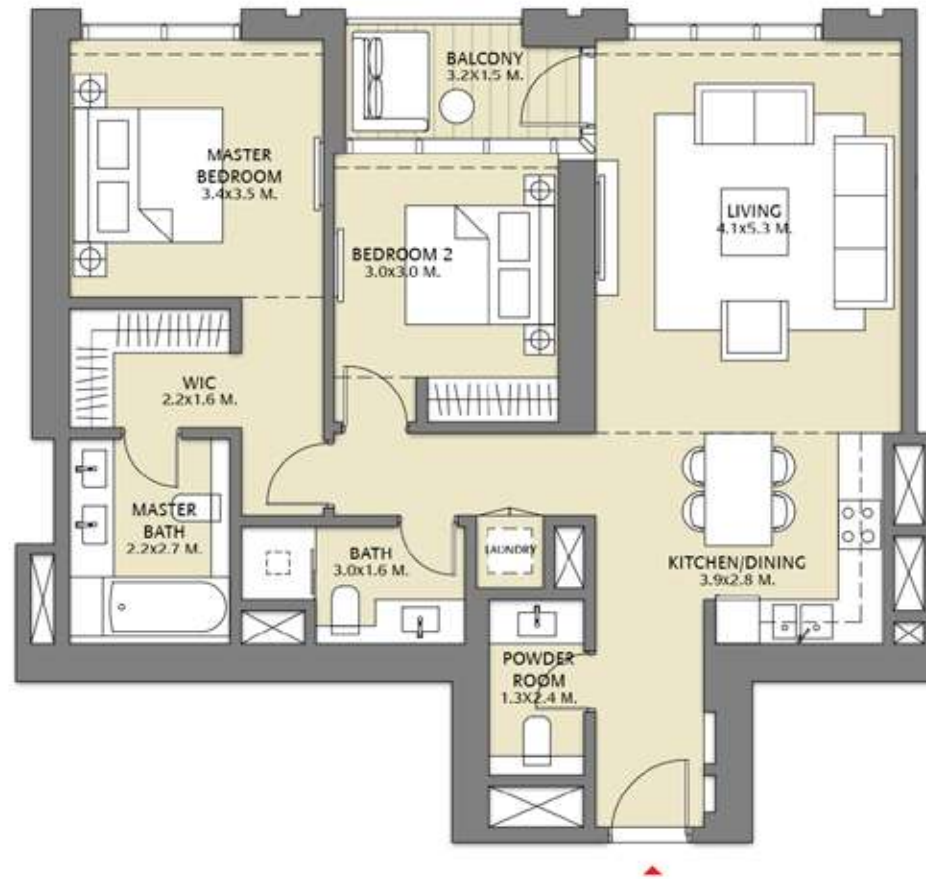
Suite Area	1020.20 Sq.ft. / 94.78 Sq.m.
Balcony Area	72.87 Sq.ft. / 6.77 Sq.m.
Total Area	1093.08 Sq.ft. / 101.55 Sq.m.



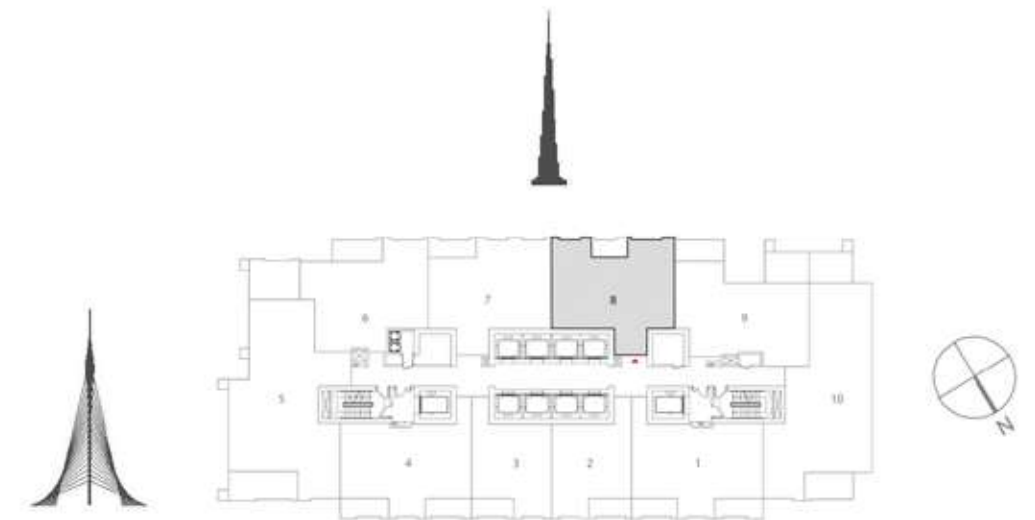
1. All dimensions are in imperial and metric, and measured to structural elements and exclude wall finishes and construction tolerances. 2. All materials, dimensions, and drawings are approximate only. 3. Information is subject to change without notice, at developer's absolute discretion. 4. Actual area may vary from the stated area. 5. Drawings not to scale. 6. All images used are for illustrative purposes only and do not represent the actual size, features, specifications, fittings, and furnishings. 7. The developer reserves the right to make revisions/alterations, at its absolute discretion, without any liability whatsoever.



TOWER 1  
2 BEDROOM W/BALCONY  
UNIT 08/ LEVELS 2-15, 17-35



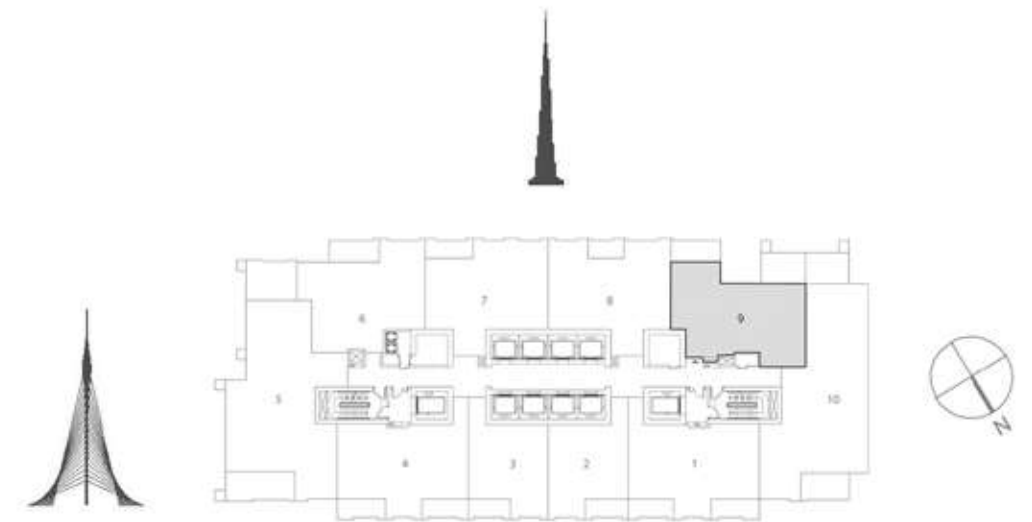
Suite Area	1046.36 Sq.ft. / 97.21 Sq.m.
Balcony Area	56.08 Sq.ft. / 5.21 Sq.m.
Total Area	1102.44 Sq.ft. / 102.42 Sq.m.



TOWER 1  
2 BEDROOM W/BALCONY  
UNIT 09/ LEVELS 2-15, 17-35



Suite Area	1022.89 Sq.ft. / 95.03 Sq.m.
Balcony Area	179.00 Sq.ft. / 16.63 Sq.m.
Total Area	1201.90 Sq.ft. / 111.66 Sq.m.



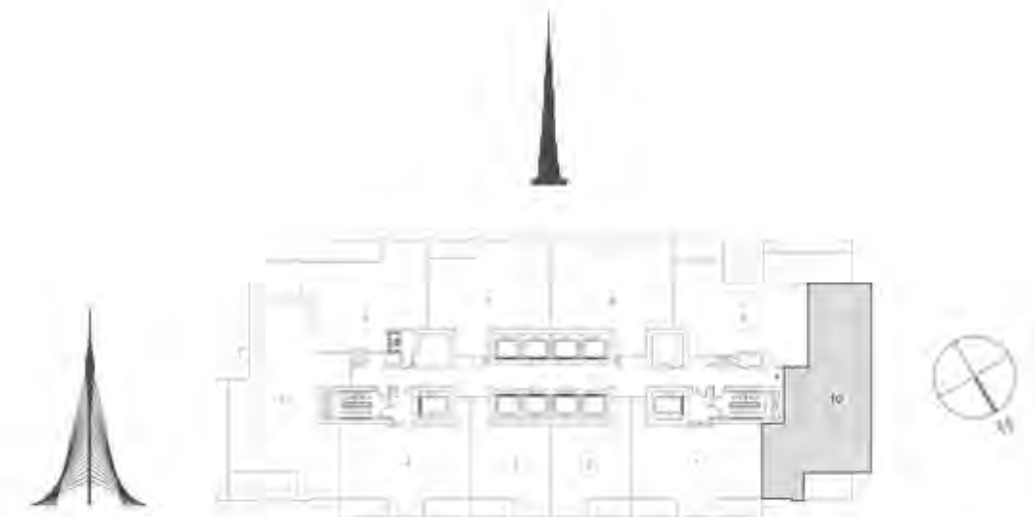
1. All dimensions are in imperial and metric, and measured to structural elements and exclude wall finishes and construction tolerances. 2. All materials, dimensions, and drawings are approximate only. 3. Information is subject to change without notice, at developer's absolute discretion. 4. Actual area may vary from the stated area. 5. Drawings not to scale. 6. All images used are for illustrative purposes only and do not represent the actual size, features, specifications, fittings, and furnishings. 7. The developer reserves the right to make revisions/alterations, at its absolute discretion, without any liability whatsoever.



TOWER 1  
3 BEDROOM W/BALCONY  
UNIT 10/ LEVELS 2-15, 17-35



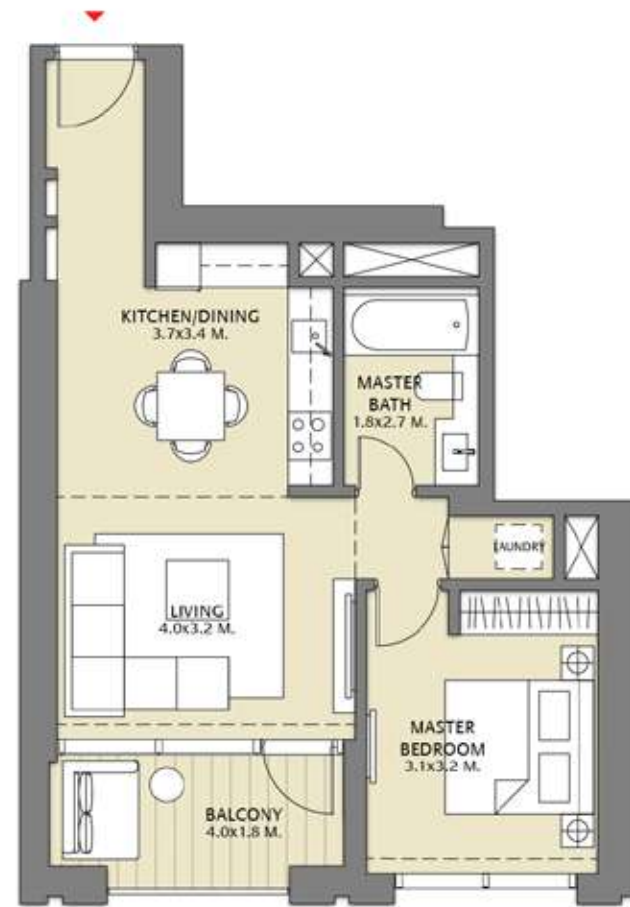
Suite Area	1567.98 Sq.ft. / 145.67 Sq.m.
Balcony Area	216.03 Sq.ft. / 20.07 Sq.m.
Total Area	1784.01 Sq.ft. / 165.74 Sq.m.



1. All dimensions are in imperial and metric, and measured to structural elements and exclude wall finishes and construction tolerances. 2. All materials, dimensions, and drawings are approximate only. 3. Information is subject to change without notice, at developer's absolute discretion. 4. Actual area may vary from the stated area. 5. Drawings not to scale. 6. All images used are for illustrative purposes only and do not represent the actual size, features, specifications, fittings, and furnishings. 7. The developer reserves the right to make revisions/alterations, at its absolute discretion, without any liability whatsoever.



TOWER 1  
1 BEDROOM W/BALCONY  
UNIT 01/ LEVELS 37-53



Suite Area	597.18 Sq.ft. / 55.48 Sq.m.
Balcony Area	84.28 Sq.ft. / 7.83 Sq.m.
Total Area	681.46 Sq.ft. / 63.31 Sq.m.



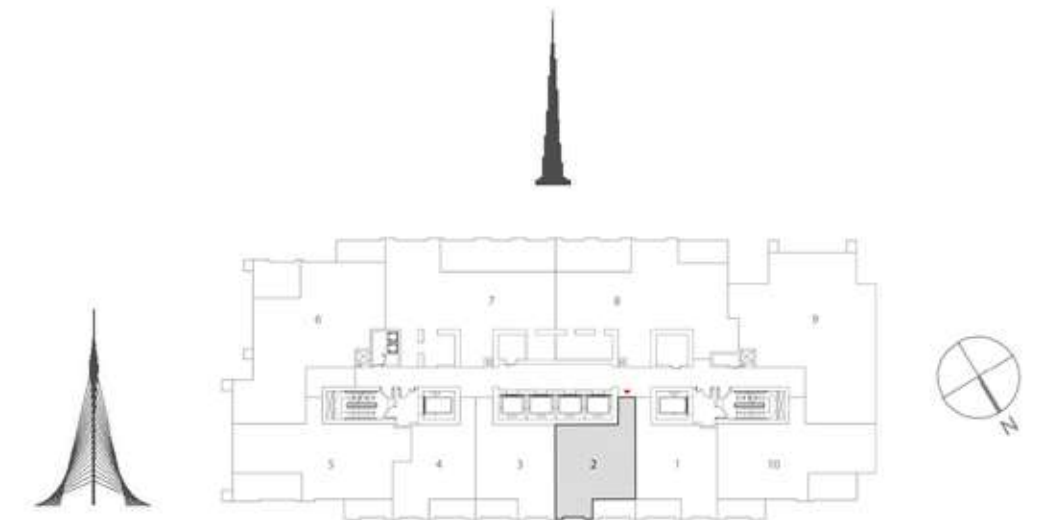
1. All dimensions are in imperial and metric, and measured to structural elements and exclude wall finishes and construction tolerances. 2. All materials, dimensions, and drawings are approximate only. 3. Information is subject to change without notice, at developer's absolute discretion. 4. Actual area may vary from the stated area. 5. Drawings not to scale. 6. All images used are for illustrative purposes only and do not represent the actual size, features, specifications, fittings, and furnishings. 7. The developer reserves the right to make revisions/alterations, at its absolute discretion, without any liability whatsoever.



TOWER 1  
1 BEDROOM W/BALCONY  
UNIT 02/ LEVELS 37-53



Suite Area	658.75 Sq.ft. / 61.20 Sq.m.
Balcony Area	76.42 Sq.ft. / 7.10 Sq.m.
Total Area	735.18 Sq.ft. / 68.30 Sq.m.



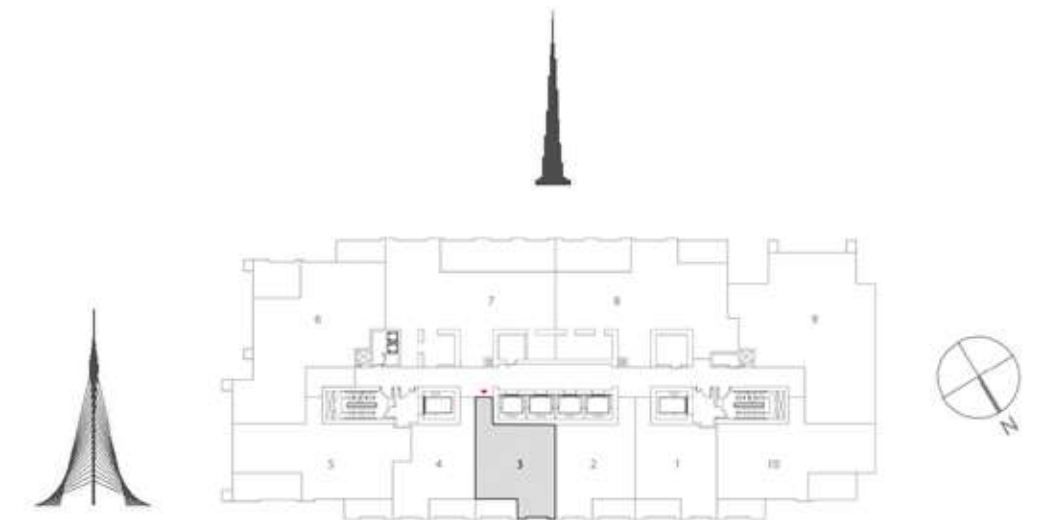
1. All dimensions are in imperial and metric, and measured to structural elements and exclude wall finishes and construction tolerances. 2. All materials, dimensions, and drawings are approximate only. 3. Information is subject to change without notice, at developer's absolute discretion. 4. Actual area may vary from the stated area. 5. Drawings not to scale. 6. All images used are for illustrative purposes only and do not represent the actual size, features, specifications, fittings, and furnishings. 7. The developer reserves the right to make revisions/alterations, at its absolute discretion, without any liability whatsoever.



TOWER 1  
1 BEDROOM W/BALCONY  
UNIT 03/ LEVELS 37-53



Suite Area	658.75 Sq.ft. / 61.20 Sq.m.
Balcony Area	76.42 Sq.ft. / 7.10 Sq.m.
Total Area	735.18 Sq.ft. / 68.30 Sq.m.



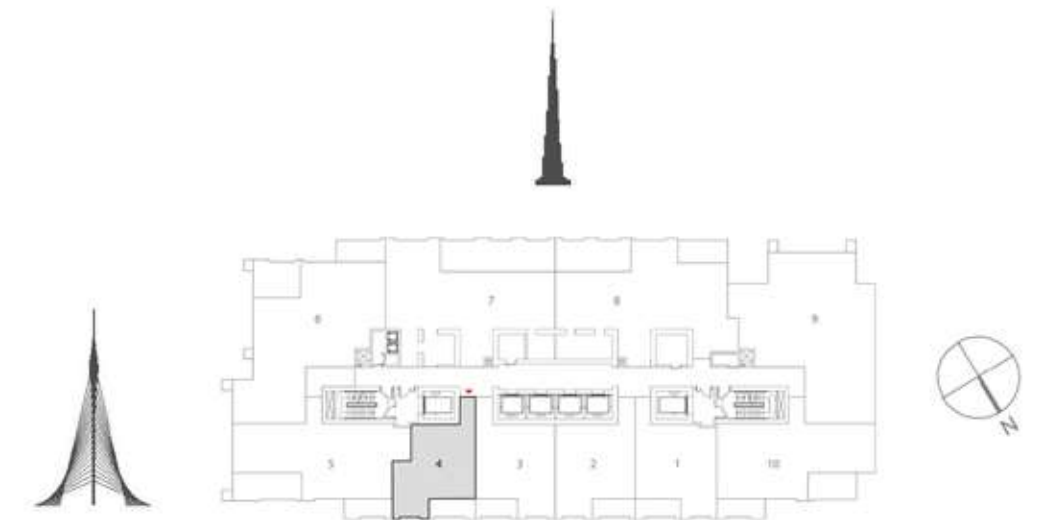
1. All dimensions are in imperial and metric, and measured to structural elements and exclude wall finishes and construction tolerances. 2. All materials, dimensions, and drawings are approximate only. 3. Information is subject to change without notice, at developer's absolute discretion. 4. Actual area may vary from the stated area. 5. Drawings not to scale. 6. All images used are for illustrative purposes only and do not represent the actual size, features, specifications, fittings, and furnishings. 7. The developer reserves the right to make revisions/alterations, at its absolute discretion, without any liability whatsoever.



TOWER 1  
1 BEDROOM W/BALCONY  
UNIT 04/ LEVELS 37-53



Suite Area	597.18 Sq.ft. / 55.48 Sq.m.
Balcony Area	84.28 Sq.ft. / 7.83 Sq.m.
Total Area	681.46 Sq.ft. / 63.31 Sq.m.

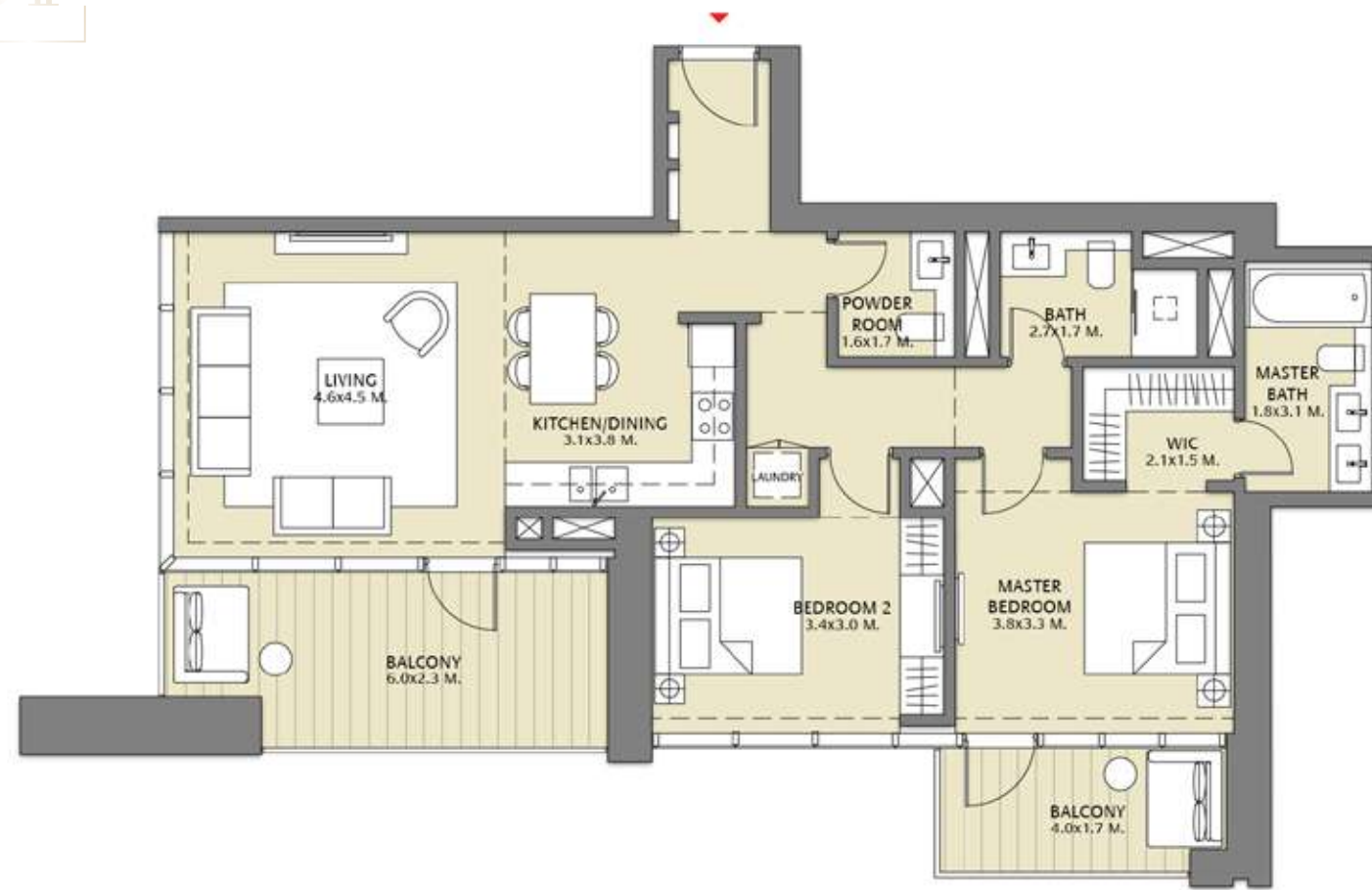


1. All dimensions are in imperial and metric, and measured to structural elements and exclude wall finishes and construction tolerances. 2. All materials, dimensions, and drawings are approximate only. 3. Information is subject to change without notice, at developer's absolute discretion. 4. Actual area may vary from the stated area. 5. Drawings not to scale. 6. All images used are for illustrative purposes only and do not represent the actual size, features, specifications, fittings, and furnishings. 7. The developer reserves the right to make revisions/alterations, at its absolute discretion, without any liability whatsoever.

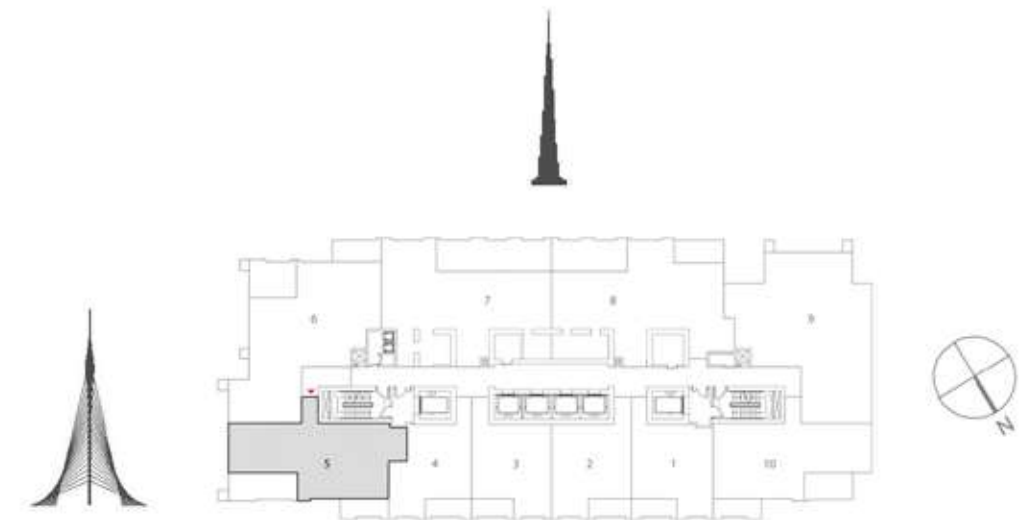




TOWER 1  
2 BEDROOM W/BALCONY  
UNIT 05/ LEVELS 37-53



Suite Area	1053.79 Sq.ft. / 97.90 Sq.m.
Balcony Area	250.69 Sq.ft. / 23.29 Sq.m.
Total Area	1304.48 Sq.ft. / 121.19 Sq.m.



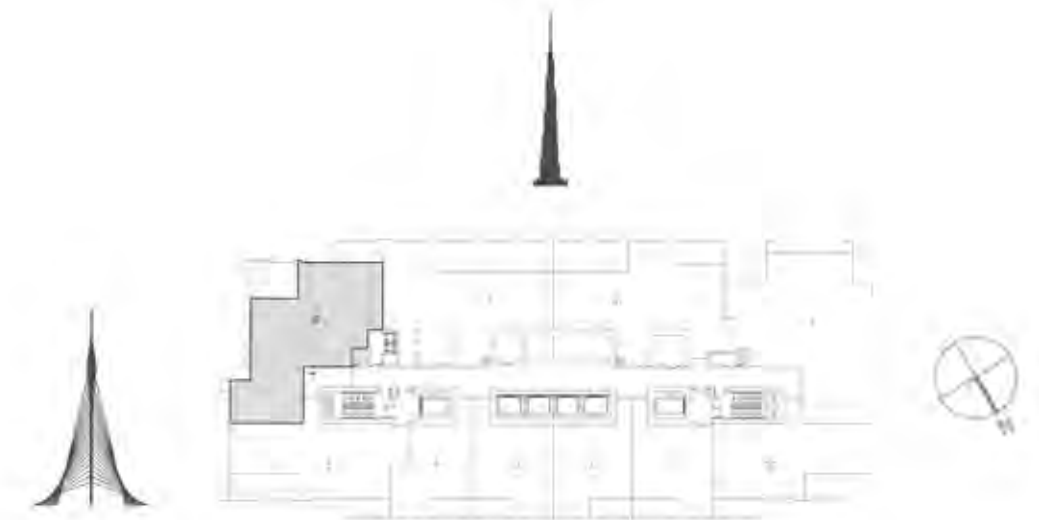
1. All dimensions are in imperial and metric, and measured to structural elements and exclude wall finishes and construction tolerances. 2. All materials, dimensions, and drawings are approximate only. 3. Information is subject to change without notice, at developer's absolute discretion. 4. Actual area may vary from the stated area. 5. Drawings not to scale. 6. All images used are for illustrative purposes only and do not represent the actual size, features, specifications, fittings, and furnishings. 7. The developer reserves the right to make revisions/alterations, at its absolute discretion, without any liability whatsoever.





TOWER 1  
3 BEDROOM W/BALCONY  
UNIT 06/ LEVELS 37-53

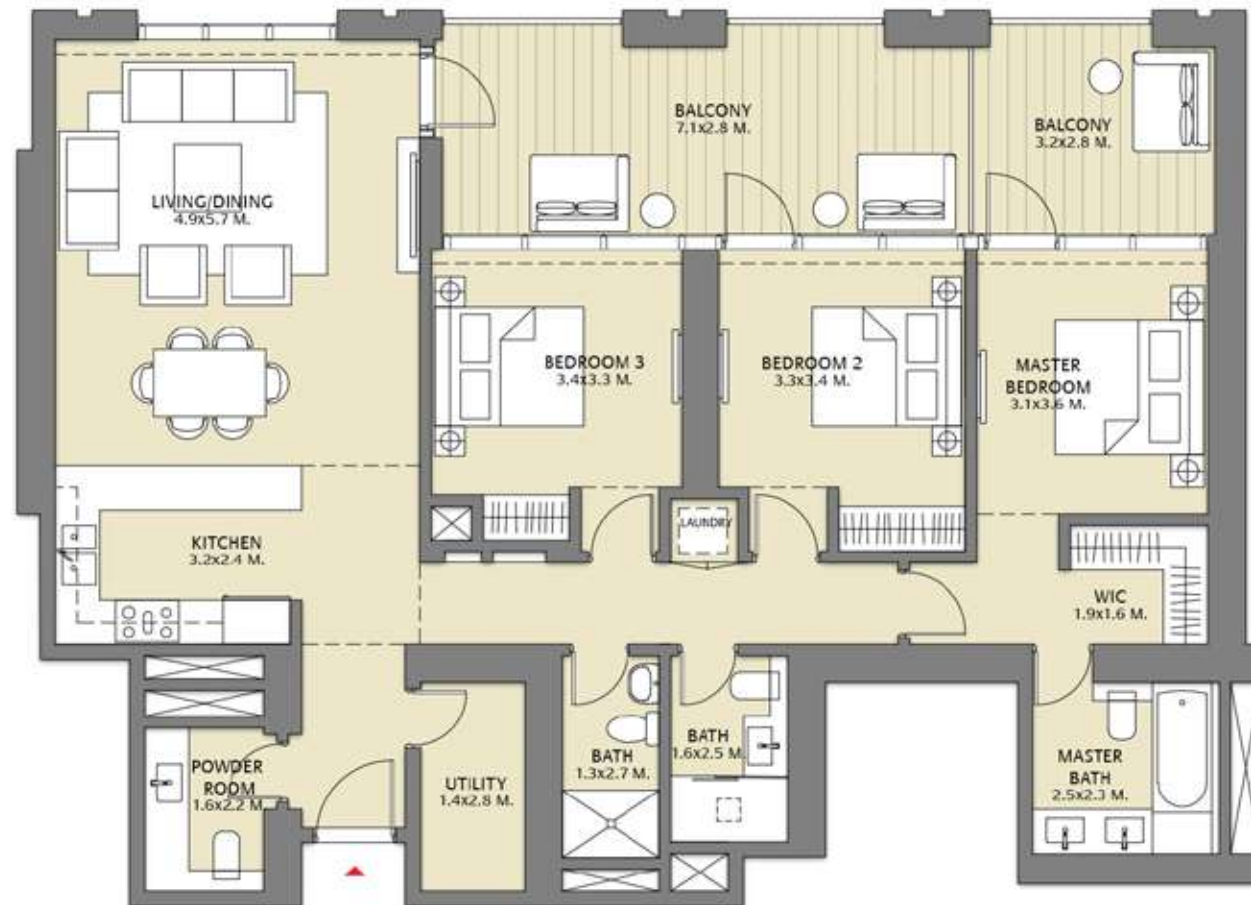
Suite Area	1359.91 Sq.ft. / 126.34 Sq.m.
Balcony Area	255.75 Sq.ft. / 23.76 Sq.m.
Total Area	1615.66 Sq.ft. / 150.10 Sq.m.



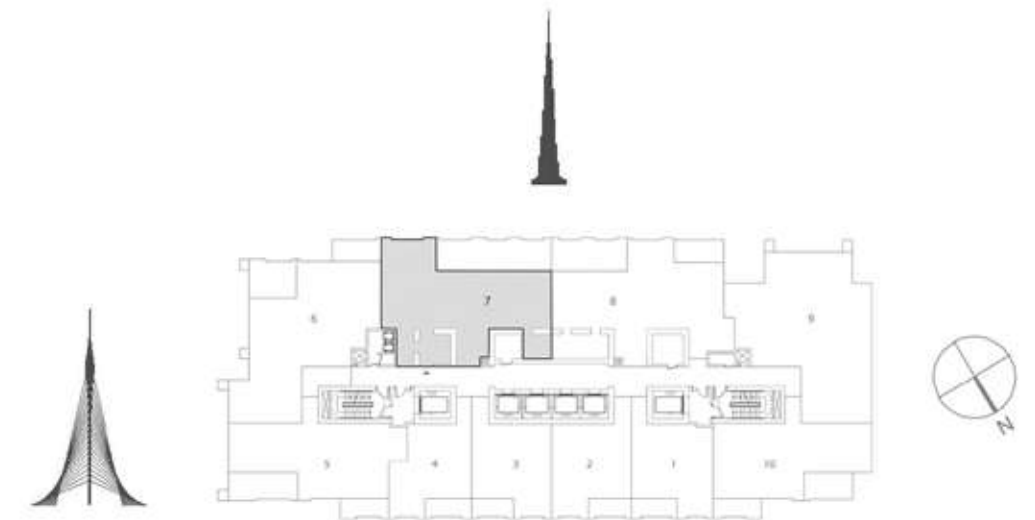
1. All dimensions are in imperial and metric, and measured to structural elements and exclude wall finishes and construction tolerances. 2. All materials, dimensions, and drawings are approximate only. 3. Information is subject to change without notice, at developer's absolute discretion. 4. Actual area may vary from the stated area. 5. Drawings not to scale. 6. All images used are for illustrative purposes only and do not represent the actual size, features, specifications, fittings, and furnishings. 7. The developer reserves the right to make revisions/alterations, at its absolute discretion, without any liability whatsoever.



TOWER 1  
3 BEDROOM W/BALCONY  
UNIT 07/ LEVELS 37-53



Suite Area	1453.24 Sq.ft. / 135.01 Sq.m.
Balcony Area	325.61 Sq.ft. / 30.25 Sq.m.
Total Area	1778.84 Sq.ft. / 165.26 Sq.m.



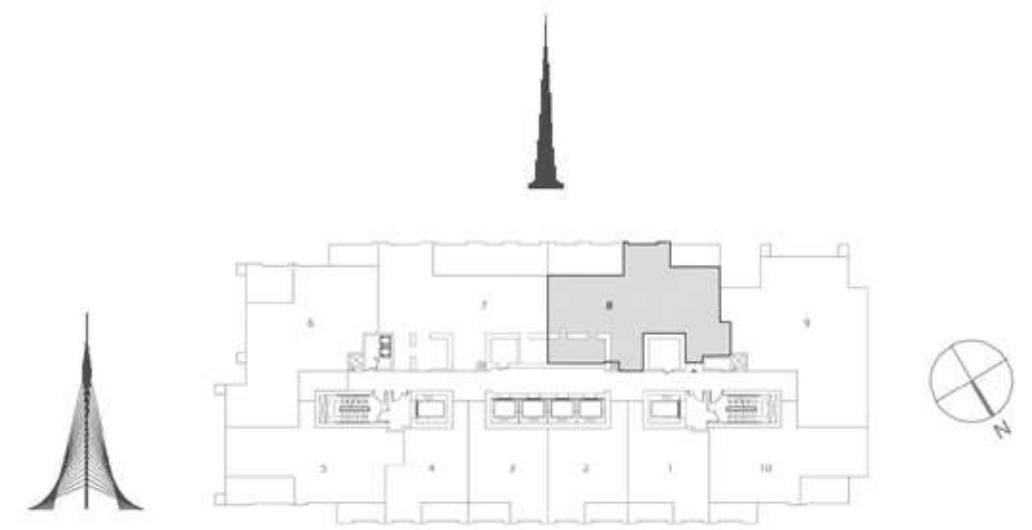
1. All dimensions are in imperial and metric, and measured to structural elements and exclude wall finishes and construction tolerances. 2. All materials, dimensions, and drawings are approximate only. 3. Information is subject to change without notice, at developer's absolute discretion. 4. Actual area may vary from the stated area. 5. Drawings not to scale. 6. All images used are for illustrative purposes only and do not represent the actual size, features, specifications, fittings, and furnishings. 7. The developer reserves the right to make revisions/alterations, at its absolute discretion, without any liability whatsoever.



TOWER 1  
3 BEDROOM W/BALCONY  
UNIT 08/ LEVELS 37-53



Suite Area	1467.55 Sq.ft. / 136.34 Sq.m.
Balcony Area	333.04 Sq.ft. / 30.94 Sq.m.
Total Area	1800.59 Sq.ft. / 167.28 Sq.m.



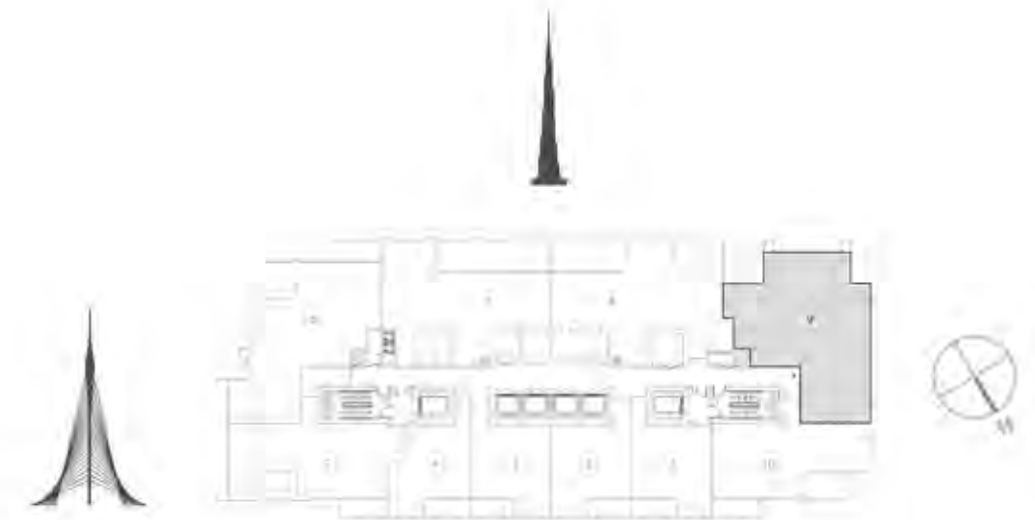
1. All dimensions are in imperial and metric, and measured to structural elements and exclude wall finishes and construction tolerances. 2. All materials, dimensions, and drawings are approximate only. 3. Information is subject to change without notice, at developer's absolute discretion. 4. Actual area may vary from the stated area. 5. Drawings not to scale. 6. All images used are for illustrative purposes only and do not represent the actual size, features, specifications, fittings, and furnishings. 7. The developer reserves the right to make revisions/alterations, at its absolute discretion, without any liability whatsoever.





TOWER 1  
3 BEDROOM W/BALCONY  
UNIT 09/ LEVELS 37-53

Suite Area	1456.90 Sq.ft. / 135.35 Sq.m.
Balcony Area	206.02 Sq.ft. / 19.14 Sq.m.
Total Area	1662.92 Sq.ft. / 154.49 Sq.m.



1. All dimensions are in imperial and metric, and measured to structural elements and exclude wall finishes and construction tolerances. 2. All materials, dimensions, and drawings are approximate only. 3. Information is subject to change without notice, at developer's absolute discretion. 4. Actual area may vary from the stated area. 5. Drawings not to scale. 6. All images used are for illustrative purposes only and do not represent the actual size, features, specifications, fittings, and furnishings. 7. The developer reserves the right to make revisions/alterations, at its absolute discretion, without any liability whatsoever.



TOWER 1  
2 BEDROOM W/BALCONY  
UNIT 10 / LEVELS 37-53



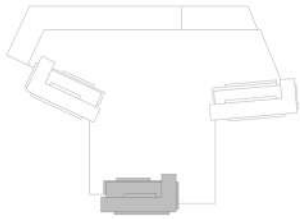
Suite Area	1037.10 Sq.ft. / 96.35 Sq.m.
Balcony Area	214.42 Sq.ft. / 19.92 Sq.m.
Total Area	1251.52 Sq.ft. / 116.27 Sq.m.



FLOOR PLANS  
TOWER 2



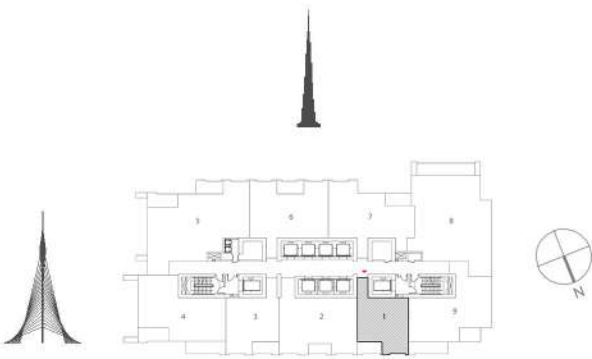
# DOWNTOWN VIEWS II



## TOWER 2 1 BEDROOM W/BALCONY UNIT 01/ LEVELS 2-15, 17-35



Suite Area	647.77 Sq.ft. / 60.18 Sq.m.
Balcony Area	80.94 Sq.ft. / 7.52 Sq.m.
Total Area	728.71 Sq.ft. / 67.70 Sq.m.

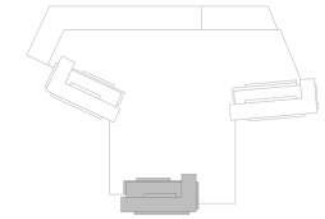


1. All dimensions are in imperial and metric, and measured to structural elements and exclude wall finishes and construction tolerances. 2. All materials, dimensions, and drawings are approximate only. 3. Information is subject to change without notice, at developer's absolute discretion. 4. Actual area may vary from the stated area. 5. Drawings not to scale. 6. All images used are for illustrative purposes only and do not represent the actual size, features, specifications, fittings, and furnishings. 7. The developer reserves the right to make revisions/alterations, at its absolute discretion, without any liability whatsoever.





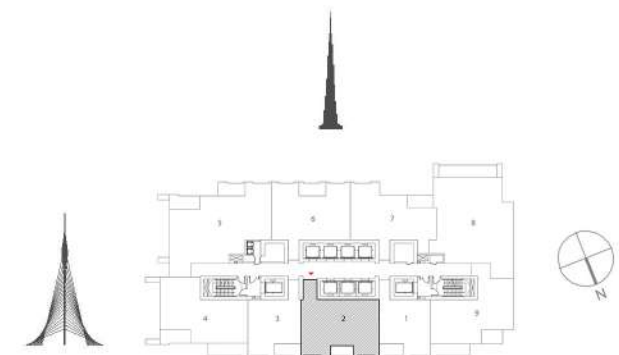
# DOWNTOWN VIEWS II



## TOWER 2 2 BEDROOM W/BALCONY UNIT 02/ LEVELS 2-15, 17-35



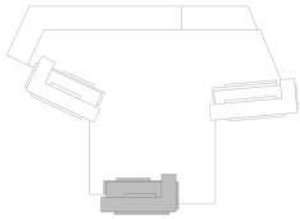
Suite Area	1031.29 Sq.ft. / 95.81 Sq.m.
Balcony Area	61.89 Sq.ft. / 5.75 Sq.m.
Total Area	1093.18 Sq.ft. / 101.56 Sq.m.



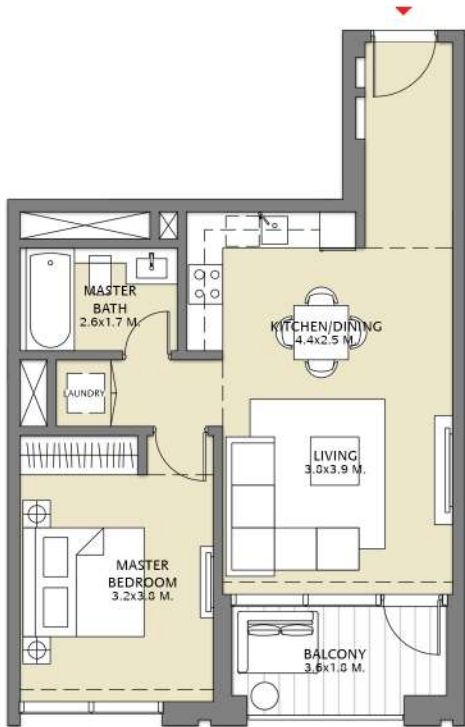
1. All dimensions are in imperial and metric, and measured to structural elements and exclude wall finishes and construction tolerances. 2. All materials, dimensions, and drawings are approximate only. 3. Information is subject to change without notice, at developer's absolute discretion. 4. Actual area may vary from the stated area. 5. Drawings not to scale. 6. All images used are for illustrative purposes only and do not represent the actual size, features, specifications, fittings, and furnishings. 7. The developer reserves the right to make revisions/alterations, at its absolute discretion, without any liability whatsoever.



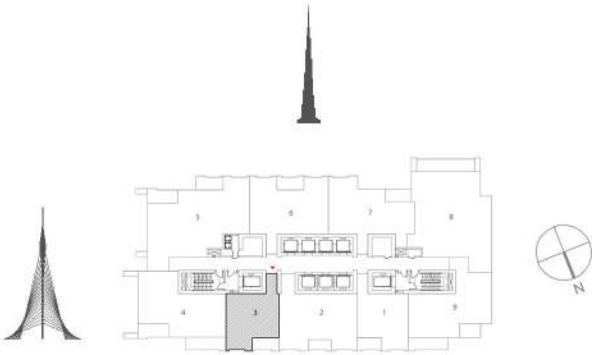
# DOWNTOWN VIEWS II



## TOWER 2 1 BEDROOM W/BALCONY UNIT 03/ LEVELS 2-15, 17-35



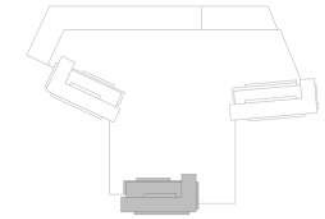
Suite Area	647.13 Sq.ft. / 60.12 Sq.m.
Balcony Area	80.94 Sq.ft. / 7.52 Sq.m.
Total Area	728.07 Sq.ft. / 67.64 Sq.m.



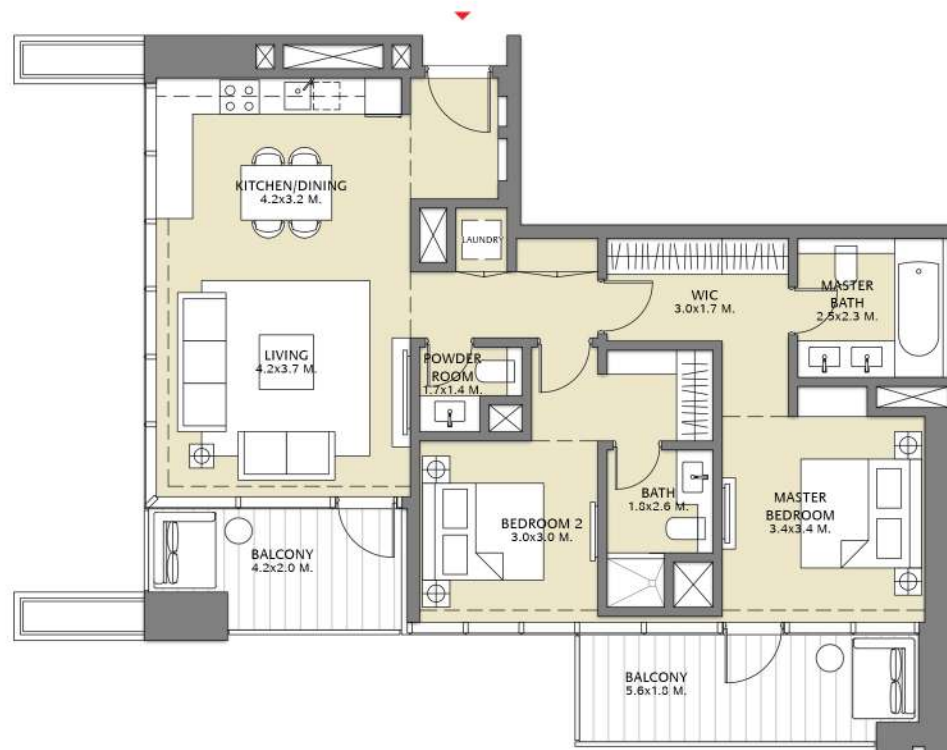
1. All dimensions are in imperial and metric, and measured to structural elements and exclude wall finishes and construction tolerances. 2. All materials, dimensions, and drawings are approximate only. 3. Information is subject to change without notice, at developer's absolute discretion. 4. Actual area may vary from the stated area. 5. Drawings not to scale. 6. All images used are for illustrative purposes only and do not represent the actual size, features, specifications, fittings, and furnishings. 7. The developer reserves the right to make revisions/alterations, at its absolute discretion, without any liability whatsoever.



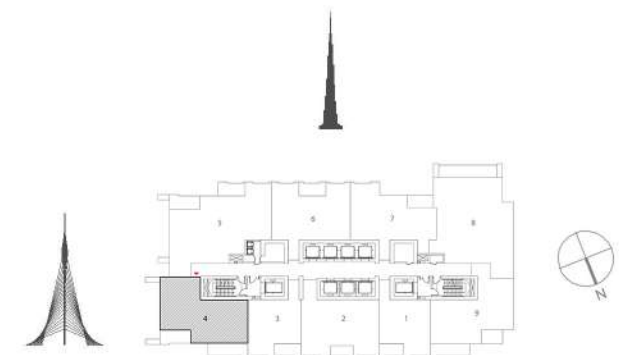
# DOWNTOWN VIEWS II



## TOWER 2 2 BEDROOM W/BALCONY UNIT 04/ LEVELS 2-15, 17-35



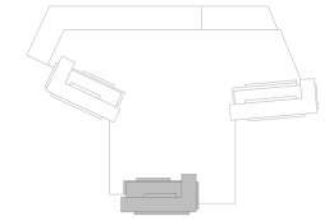
Suite Area	1004.27 Sq.ft. / 93.30 Sq.m.
Balcony Area	213.02 Sq.ft. / 19.79 Sq.m.
Total Area	1217.29 Sq.ft. / 113.09 Sq.m.



1. All dimensions are in imperial and metric, and measured to structural elements and exclude wall finishes and construction tolerances. 2. All materials, dimensions, and drawings are approximate only. 3. Information is subject to change without notice, at developer's absolute discretion. 4. Actual area may vary from the stated area. 5. Drawings not to scale. 6. All images used are for illustrative purposes only and do not represent the actual size, features, specifications, fittings, and furnishings. 7. The developer reserves the right to make revisions/alterations, at its absolute discretion, without any liability whatsoever.

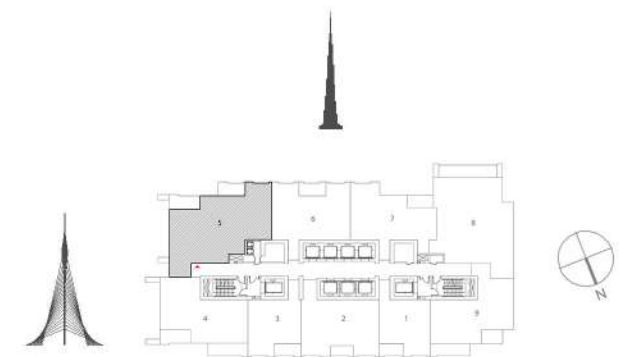


# DOWNTOWN VIEWS II



## TOWER 2 3 BEDROOM W/BALCONY UNIT 05/ LEVELS 2-15, 17-35

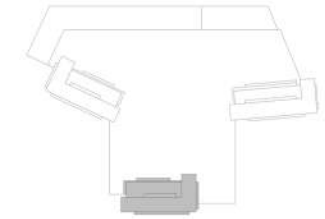
Suite Area	1450.44 Sq.ft. / 134.75 Sq.m.
Balcony Area	178.36 Sq.ft. / 16.57 Sq.m.
Total Area	1628.80 Sq.ft. / 151.32 Sq.m.



1. All dimensions are in imperial and metric, and measured to structural elements and exclude wall finishes and construction tolerances. 2. All materials, dimensions, and drawings are approximate only. 3. Information is subject to change without notice, at developer's absolute discretion. 4. Actual area may vary from the stated area. 5. Drawings not to scale. 6. All images used are for illustrative purposes only and do not represent the actual size, features, specifications, fittings, and furnishings. 7. The developer reserves the right to make revisions/alterations, at its absolute discretion, without any liability whatsoever.

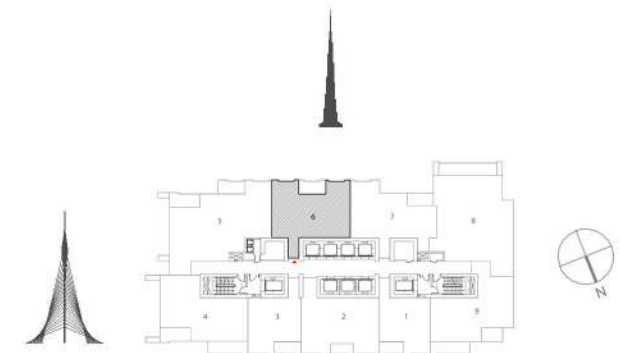


# DOWNTOWN VIEWS II



## TOWER 2 2 BEDROOM W/BALCONY UNIT 06/ LEVELS 2-15, 17-35

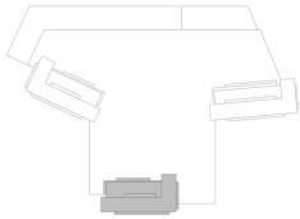
Suite Area	1066.60 Sq.ft. / 99.09 Sq.m.
Balcony Area	70.93 Sq.ft. / 6.59 Sq.m.
Total Area	1137.53 Sq.ft. / 105.68 Sq.m.



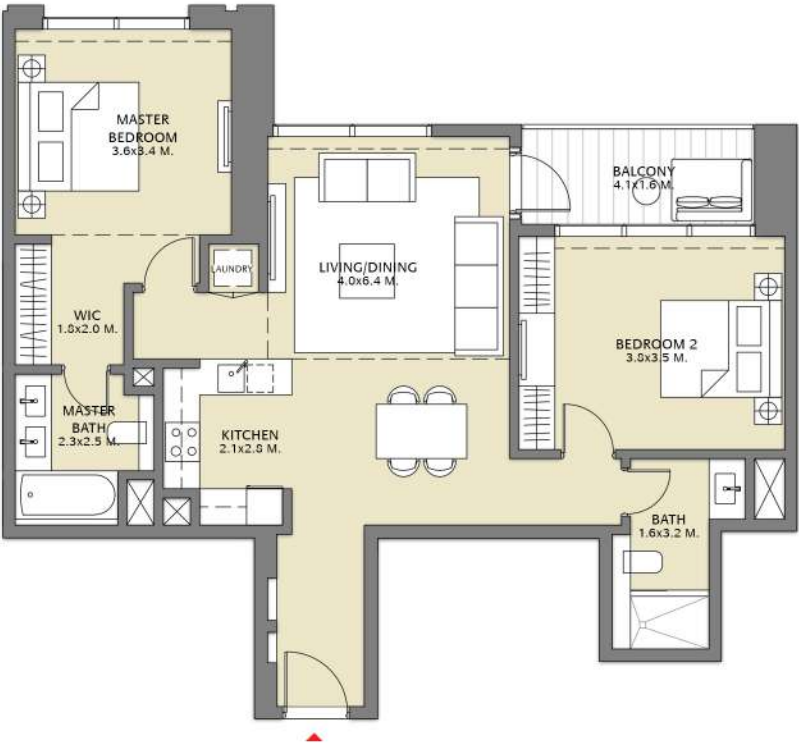
1. All dimensions are in imperial and metric, and measured to structural elements and exclude wall finishes and construction tolerances. 2. All materials, dimensions, and drawings are approximate only. 3. Information is subject to change without notice, at developer's absolute discretion. 4. Actual area may vary from the stated area. 5. Drawings not to scale. 6. All images used are for illustrative purposes only and do not represent the actual size, features, specifications, fittings, and furnishings. 7. The developer reserves the right to make revisions/alterations, at its absolute discretion, without any liability whatsoever.



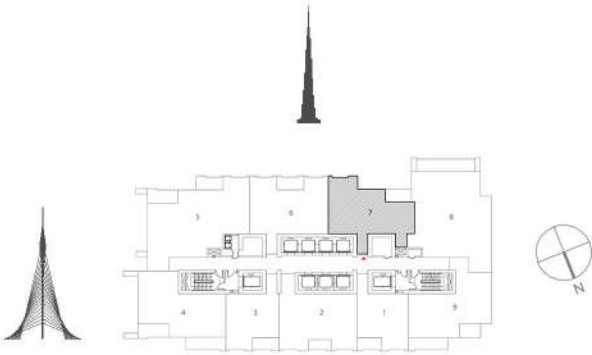
# DOWNTOWN VIEWS II



## TOWER 2 2 BEDROOM W/BALCONY UNIT 07/ LEVELS 2-15, 17-35



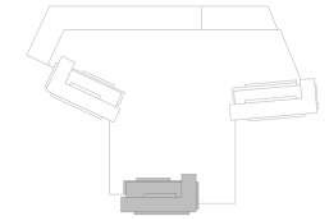
Suite Area	1027.95 Sq.ft. / 95.50 Sq.m.
Balcony Area	76.96 Sq.ft. / 7.15 Sq.m.
Total Area	1104.91 Sq.ft. / 102.65 Sq.m.



1. All dimensions are in imperial and metric, and measured to structural elements and exclude wall finishes and construction tolerances. 2. All materials, dimensions, and drawings are approximate only. 3. Information is subject to change without notice, at developer's absolute discretion. 4. Actual area may vary from the stated area. 5. Drawings not to scale. 6. All images used are for illustrative purposes only and do not represent the actual size, features, specifications, fittings, and furnishings. 7. The developer reserves the right to make revisions/alterations, at its absolute discretion, without any liability whatsoever.

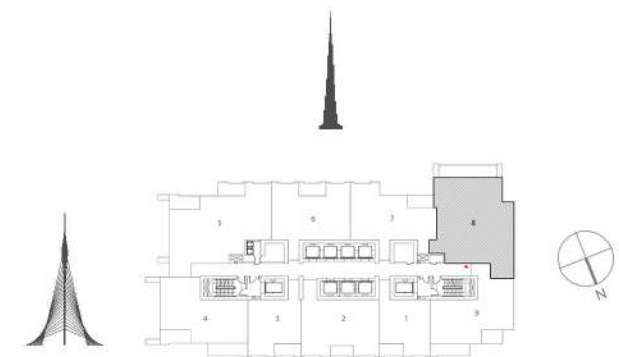


# DOWNTOWN VIEWS II



## TOWER 2 3 BEDROOM W/BALCONY UNIT 08/ LEVELS 2-15, 17-35

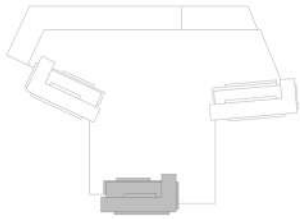
Suite Area	1522.23 Sq.ft. / 141.42 Sq.m.
Balcony Area	184.49 Sq.ft. / 17.14 Sq.m.
Total Area	1706.72 Sq.ft. / 158.56 Sq.m.



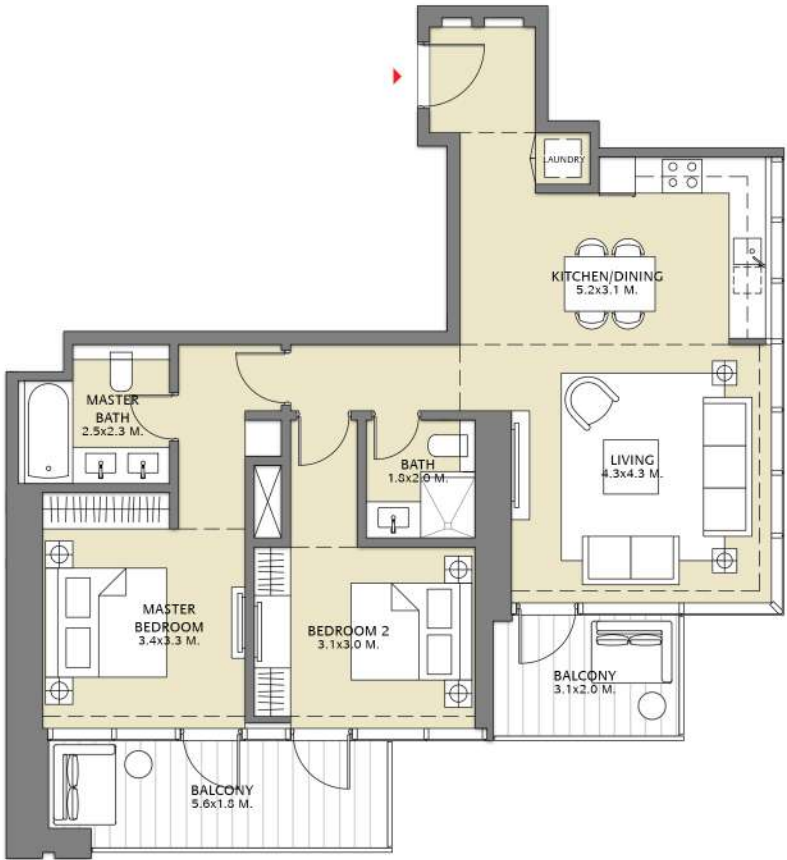
1. All dimensions are in imperial and metric, and measured to structural elements and exclude wall finishes and construction tolerances. 2. All materials, dimensions, and drawings are approximate only. 3. Information is subject to change without notice, at developer's absolute discretion. 4. Actual area may vary from the stated area. 5. Drawings not to scale. 6. All images used are for illustrative purposes only and do not represent the actual size, features, specifications, fittings, and furnishings. 7. The developer reserves the right to make revisions/alterations, at its absolute discretion, without any liability whatsoever.



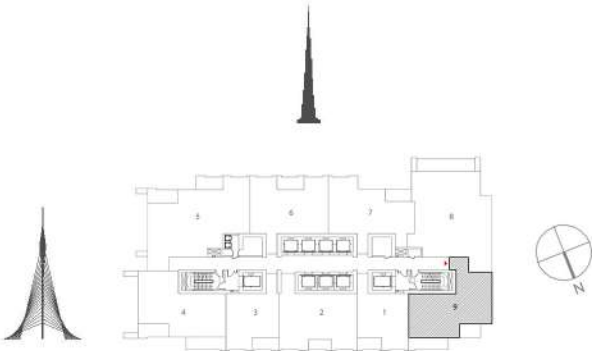
# DOWNTOWN VIEWS II



## TOWER 2 2 BEDROOM W/BALCONY UNIT 09/ LEVELS 2-15, 17-35



Suite Area	1026.34 Sq.ft. / 95.35 Sq.m.
Balcony Area	190.74 Sq.ft. / 17.72 Sq.m.
Total Area	1217.08 Sq.ft. / 113.07 Sq.m.

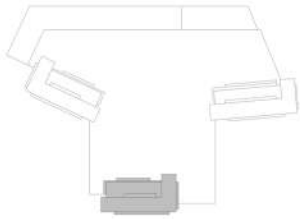


1. All dimensions are in imperial and metric, and measured to structural elements and exclude wall finishes and construction tolerances. 2. All materials, dimensions, and drawings are approximate only. 3. Information is subject to change without notice, at developer's absolute discretion. 4. Actual area may vary from the stated area. 5. Drawings not to scale. 6. All images used are for illustrative purposes only and do not represent the actual size, features, specifications, fittings, and furnishings. 7. The developer reserves the right to make revisions/alterations, at its absolute discretion, without any liability whatsoever.





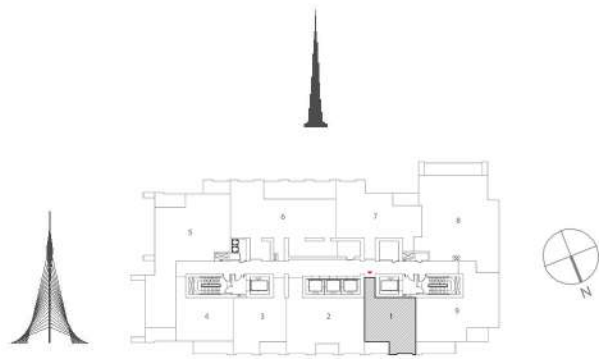
# DOWNTOWN VIEWS II



## TOWER 2 1 BEDROOM W/BALCONY UNIT 01/ LEVELS 37-54



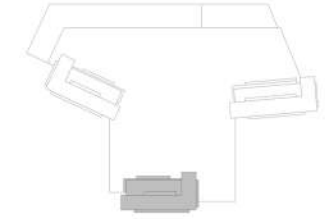
Suite Area	643.36 Sq.ft. / 59.77 Sq.m.
Balcony Area	79.98 Sq.ft. / 7.43 Sq.m.
Total Area	723.34 Sq.ft. / 67.20 Sq.m.



1. All dimensions are in imperial and metric, and measured to structural elements and exclude wall finishes and construction tolerances. 2. All materials, dimensions, and drawings are approximate only. 3. Information is subject to change without notice, at developer's absolute discretion. 4. Actual area may vary from the stated area. 5. Drawings not to scale. 6. All images used are for illustrative purposes only and do not represent the actual size, features, specifications, fittings, and furnishings. 7. The developer reserves the right to make revisions/alterations, at its absolute discretion, without any liability whatsoever.



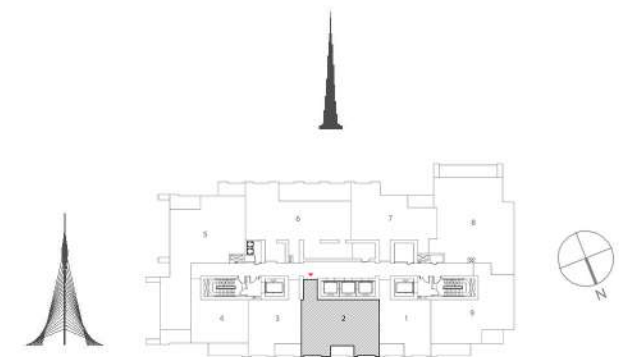
# DOWNTOWN VIEWS II



## TOWER 2 2 BEDROOM W/BALCONY UNIT 02/ LEVELS 37-54



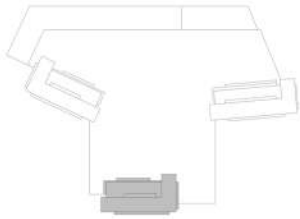
Suite Area	1036.89 Sq.ft. / 96.33 Sq.m.
Balcony Area	61.89 Sq.ft. / 5.75 Sq.m.
Total Area	1098.78 Sq.ft. / 102.08 Sq.m.



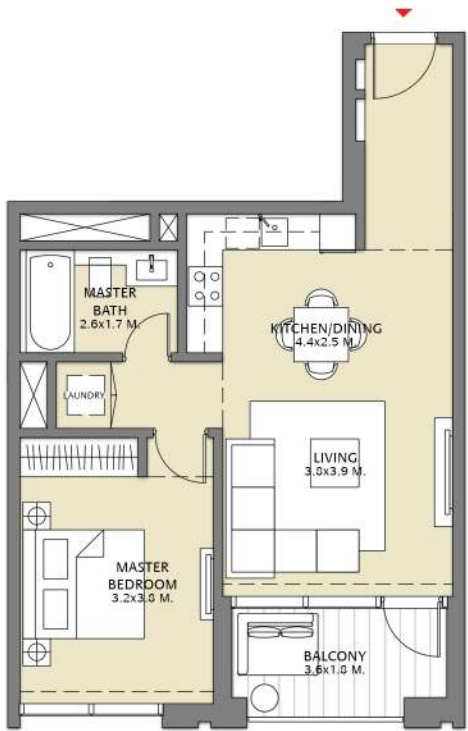
1. All dimensions are in imperial and metric, and measured to structural elements and exclude wall finishes and construction tolerances. 2. All materials, dimensions, and drawings are approximate only. 3. Information is subject to change without notice, at developer's absolute discretion. 4. Actual area may vary from the stated area. 5. Drawings not to scale. 6. All images used are for illustrative purposes only and do not represent the actual size, features, specifications, fittings, and furnishings. 7. The developer reserves the right to make revisions/alterations, at its absolute discretion, without any liability whatsoever.



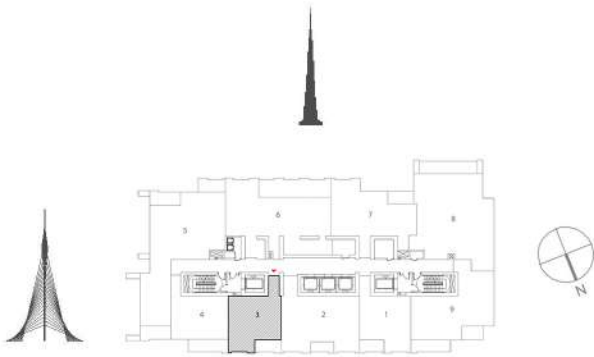
# DOWNTOWN VIEWS II



## TOWER 2 1 BEDROOM W/BALCONY UNIT 03/ LEVELS 37-54



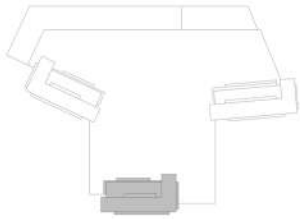
Suite Area	642.93 Sq.ft. / 59.73 Sq.m.
Balcony Area	79.98 Sq.ft. / 7.43 Sq.m.
Total Area	722.91 Sq.ft. / 67.16 Sq.m.



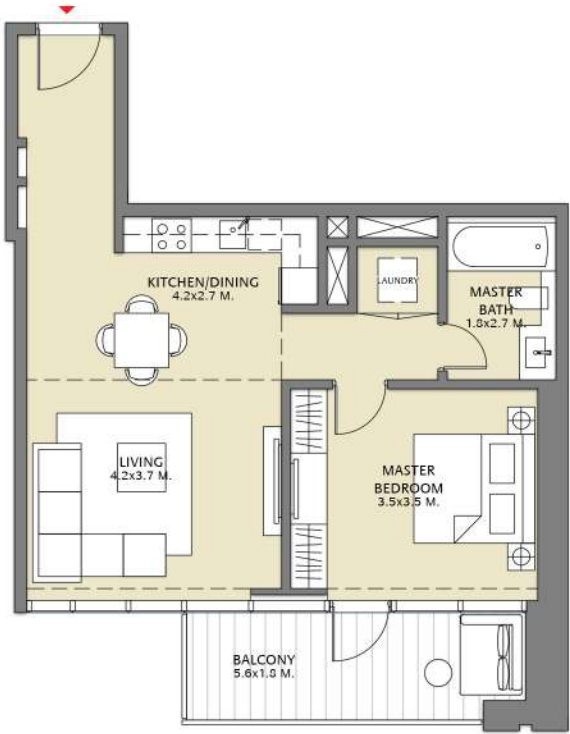
1. All dimensions are in imperial and metric, and measured to structural elements and exclude wall finishes and construction tolerances. 2. All materials, dimensions, and drawings are approximate only. 3. Information is subject to change without notice, at developer's absolute discretion. 4. Actual area may vary from the stated area. 5. Drawings not to scale. 6. All images used are for illustrative purposes only and do not represent the actual size, features, specifications, fittings, and furnishings. 7. The developer reserves the right to make revisions/alterations, at its absolute discretion, without any liability whatsoever.



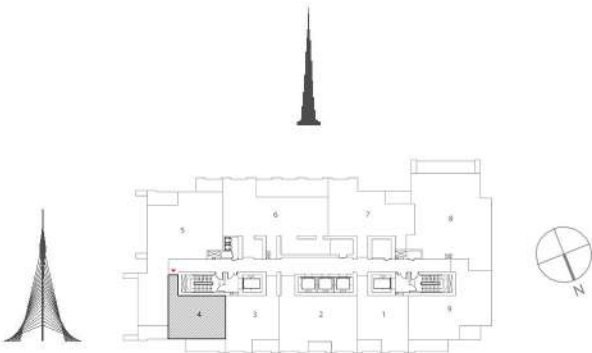
# DOWNTOWN VIEWS II



## TOWER 2 1 BEDROOM W/BALCONY UNIT 04/ LEVELS 37-54



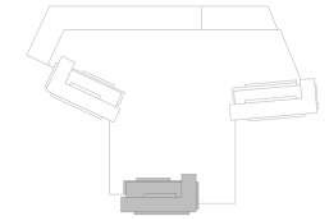
Suite Area	687.92 Sq.ft. / 63.91 Sq.m.
Balcony Area	118.30 Sq.ft. / 10.99 Sq.m.
Total Area	806.22 Sq.ft. / 74.90 Sq.m.



1. All dimensions are in imperial and metric, and measured to structural elements and exclude wall finishes and construction tolerances. 2. All materials, dimensions, and drawings are approximate only. 3. Information is subject to change without notice, at developer's absolute discretion. 4. Actual area may vary from the stated area. 5. Drawings not to scale. 6. All images used are for illustrative purposes only and do not represent the actual size, features, specifications, fittings, and furnishings. 7. The developer reserves the right to make revisions/alterations, at its absolute discretion, without any liability whatsoever.

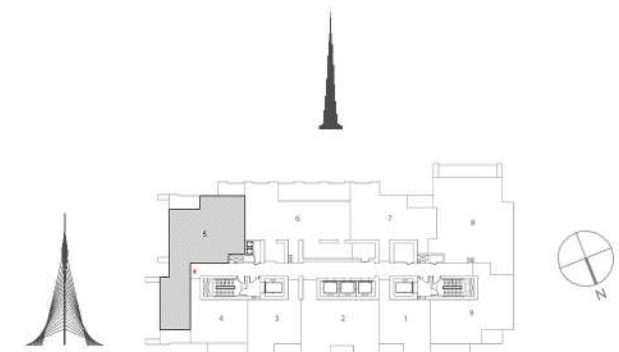


# DOWNTOWN VIEWS II



## TOWER 2 3 BEDROOM W/BALCONY UNIT 05/ LEVELS 37-54

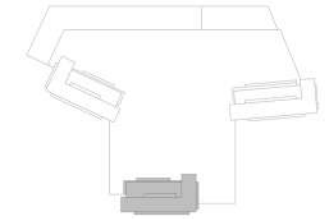
Suite Area	1443.98 Sq.ft. / 134.15 Sq.m.
Balcony Area	272.87 Sq.ft. / 25.35 Sq.m.
Total Area	1716.85 Sq.ft. / 159.50 Sq.m.



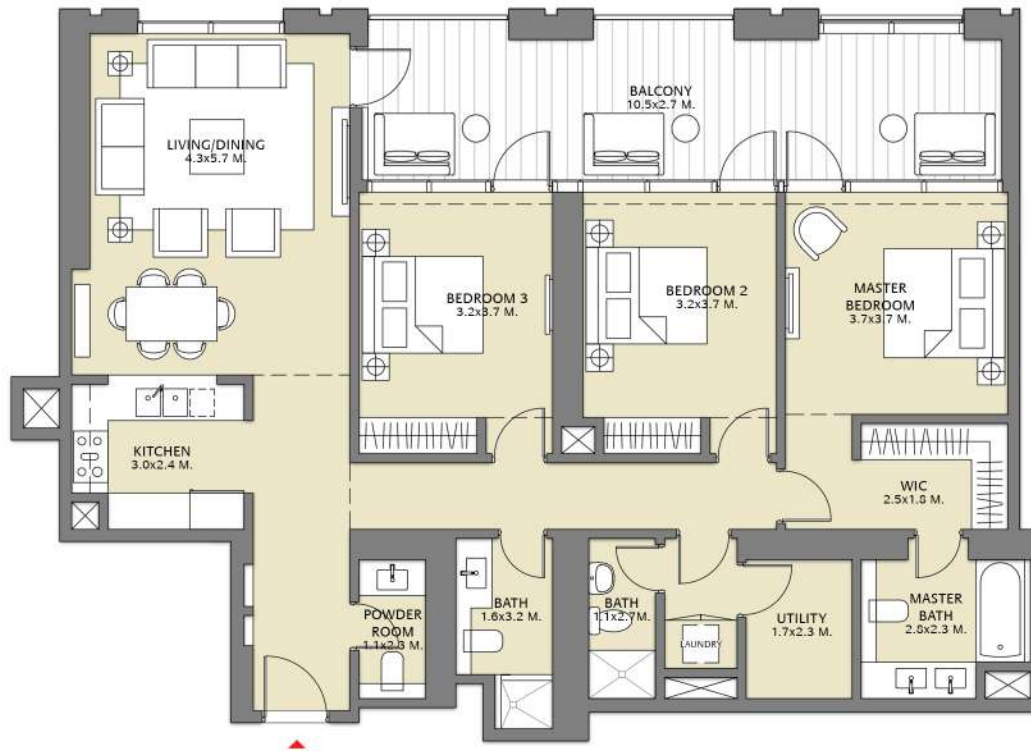
1. All dimensions are in imperial and metric, and measured to structural elements and exclude wall finishes and construction tolerances. 2. All materials, dimensions, and drawings are approximate only. 3. Information is subject to change without notice, at developer's absolute discretion. 4. Actual area may vary from the stated area. 5. Drawings not to scale. 6. All images used are for illustrative purposes only and do not represent the actual size, features, specifications, fittings, and furnishings. 7. The developer reserves the right to make revisions/alterations, at its absolute discretion, without any liability whatsoever.



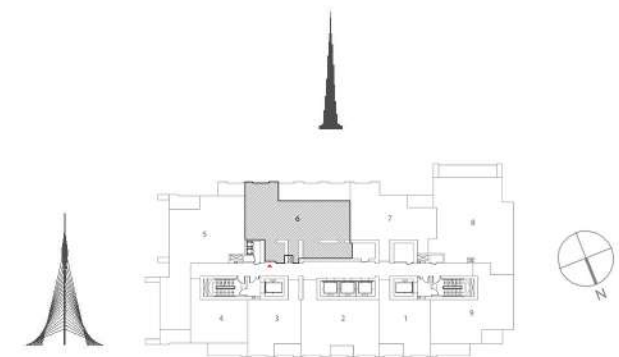
# DOWNTOWN VIEWS II



## TOWER 2 3 BEDROOM W/BALCONY UNIT 06/ LEVELS 37-54



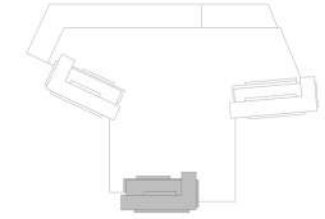
Suite Area	1510.28 Sq.ft. / 140.31 Sq.m.
Balcony Area	311.29 Sq.ft. / 28.92 Sq.m.
Total Area	1821.57 Sq.ft. / 169.23 Sq.m.



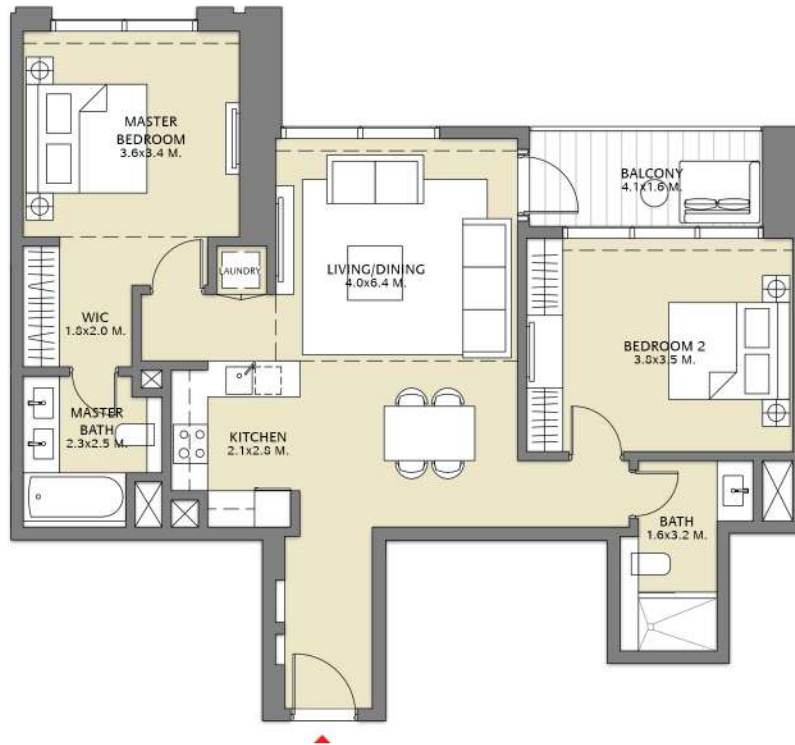
1. All dimensions are in imperial and metric, and measured to structural elements and exclude wall finishes and construction tolerances. 2. All materials, dimensions, and drawings are approximate only. 3. Information is subject to change without notice, at developer's absolute discretion. 4. Actual area may vary from the stated area. 5. Drawings not to scale. 6. All images used are for illustrative purposes only and do not represent the actual size, features, specifications, fittings, and furnishings. 7. The developer reserves the right to make revisions/alterations, at its absolute discretion, without any liability whatsoever.



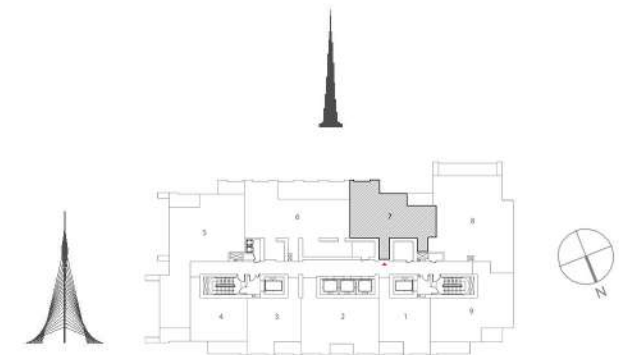
# DOWNTOWN VIEWS II



## TOWER 2 2 BEDROOM W/BALCONY UNIT 07/ LEVELS 37-54



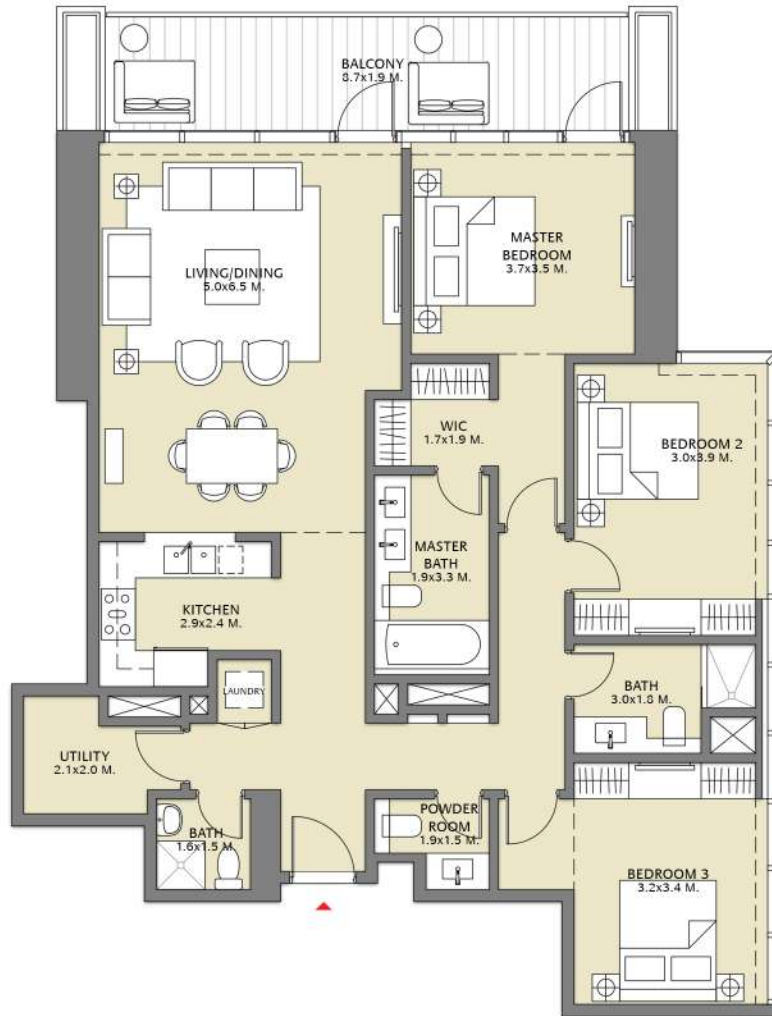
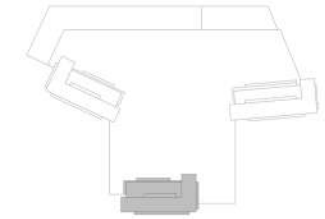
Suite Area	1028.92 Sq.ft. / 95.59 Sq.m.
Balcony Area	76.96 Sq.ft. / 7.15 Sq.m.
Total Area	1105.88 Sq.ft. / 102.74 Sq.m.



1. All dimensions are in imperial and metric, and measured to structural elements and exclude wall finishes and construction tolerances. 2. All materials, dimensions, and drawings are approximate only. 3. Information is subject to change without notice, at developer's absolute discretion. 4. Actual area may vary from the stated area. 5. Drawings not to scale. 6. All images used are for illustrative purposes only and do not represent the actual size, features, specifications, fittings, and furnishings. 7. The developer reserves the right to make revisions/alterations, at its absolute discretion, without any liability whatsoever.

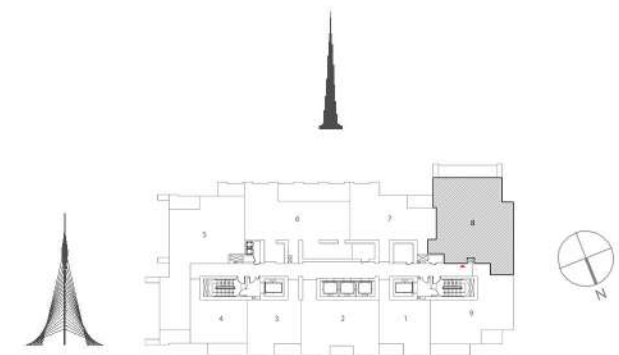


# DOWNTOWN VIEWS II



## TOWER 2 3 BEDROOM W/BALCONY UNIT 08/ LEVELS 37-54

Suite Area	1522.23 Sq.ft. / 141.42 Sq.m.
Balcony Area	184.49 Sq.ft. / 17.14 Sq.m.
Total Area	1706.72 Sq.ft. / 158.56 Sq.m.

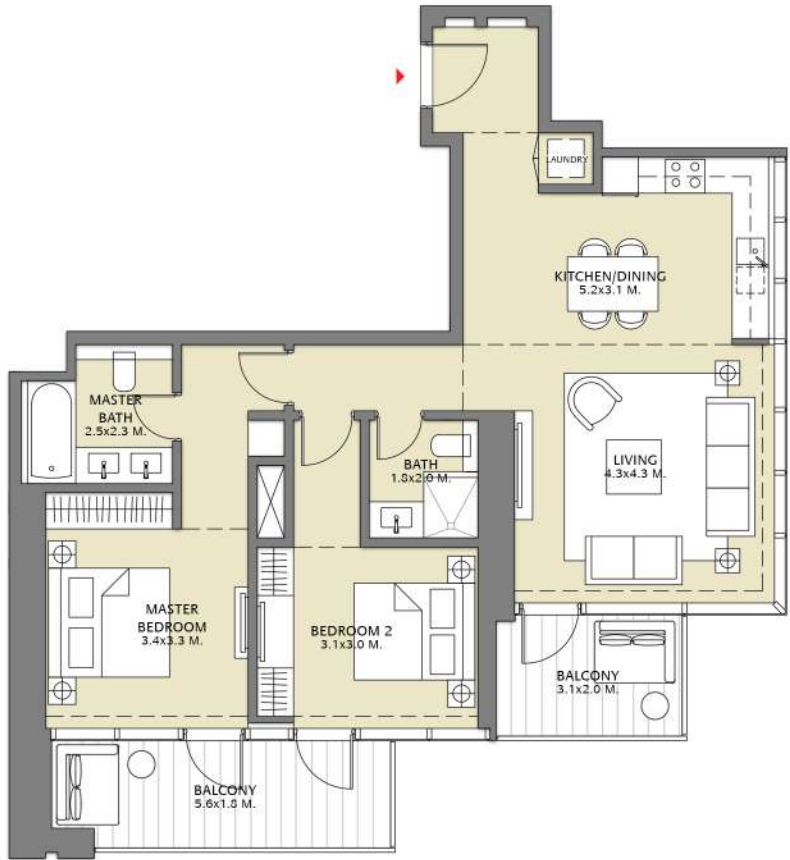
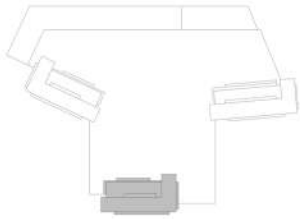


1. All dimensions are in imperial and metric, and measured to structural elements and exclude wall finishes and construction tolerances. 2. All materials, dimensions, and drawings are approximate only. 3. Information is subject to change without notice, at developer's absolute discretion. 4. Actual area may vary from the stated area. 5. Drawings not to scale. 6. All images used are for illustrative purposes only and do not represent the actual size, features, specifications, fittings, and furnishings. 7. The developer reserves the right to make revisions/alterations, at its absolute discretion, without any liability whatsoever.



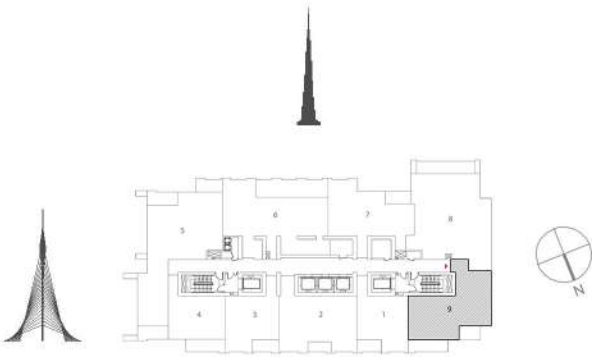


# DOWNTOWN VIEWS II



## TOWER 2 2 BEDROOM W/BALCONY UNIT 09/ LEVELS 37-54

Suite Area	1030.21 Sq.ft. / 95.71 Sq.m.
Balcony Area	191.71 Sq.ft. / 17.81 Sq.m.
Total Area	1221.92 Sq.ft. / 113.52 Sq.m.



1. All dimensions are in imperial and metric, and measured to structural elements and exclude wall finishes and construction tolerances. 2. All materials, dimensions, and drawings are approximate only. 3. Information is subject to change without notice, at developer's absolute discretion. 4. Actual area may vary from the stated area. 5. Drawings not to scale. 6. All images used are for illustrative purposes only and do not represent the actual size, features, specifications, fittings, and furnishings. 7. The developer reserves the right to make revisions/alterations, at its absolute discretion, without any liability whatsoever.

