

Dubai Islands

WHERE LIFE
flows



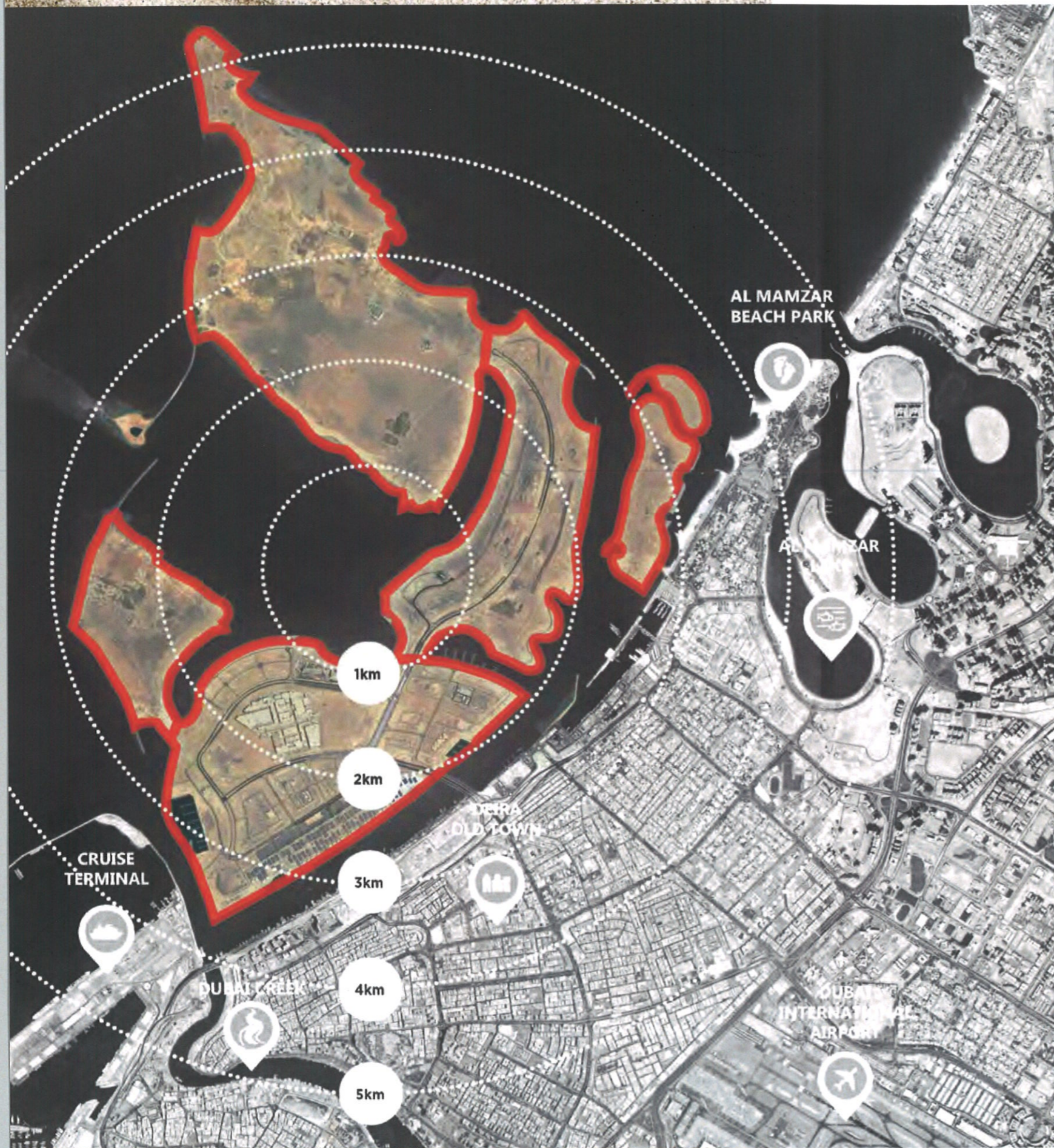
NAKHEEL



Endless possibilities from coast to coast

Welcome to Dubai Islands, where opportunity flows.
As the spectacular vision of the Nakheel Group, Dubai Islands
rises from the sea, redefining the horizon of Dubai and inviting
you to step across the bridge, towards a future of possibilities.





1
KM
DEIRA
OLD TOWN

4
KMS
CRUISE
TERMINAL

5
KMS
DUBAI
MARITIME CITY

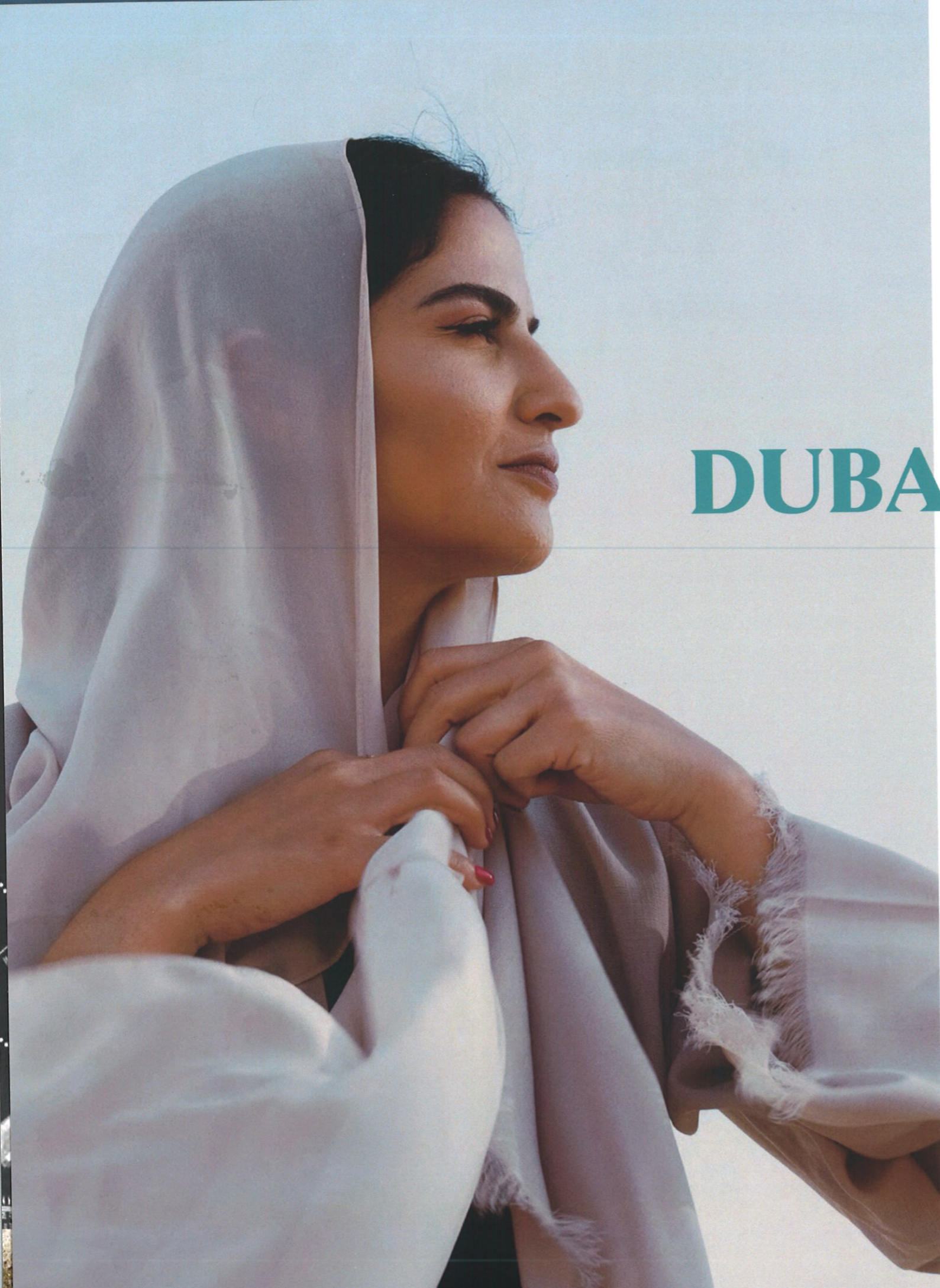
25
KMS
DOWNTOWN
DUBAI

10
KMS
DUBAI INTERNATIONAL
AIRPORT

.....
Designed in line with Dubai's 2040 vision, Dubai Islands is an iconic symbol of future-living that will transcend time and trends to embody Dubai's goal to be the best city for living in the world.

DUBAI





DUBAI VISION 2040

“Enhancing people’s happiness and quality of life and reinforcing Dubai as a global destination for citizens, residents and visitors over the next 20 years”.

60%

GREEN &
NATURAL
SPACES

134%

MORE
TOURISM
LAND

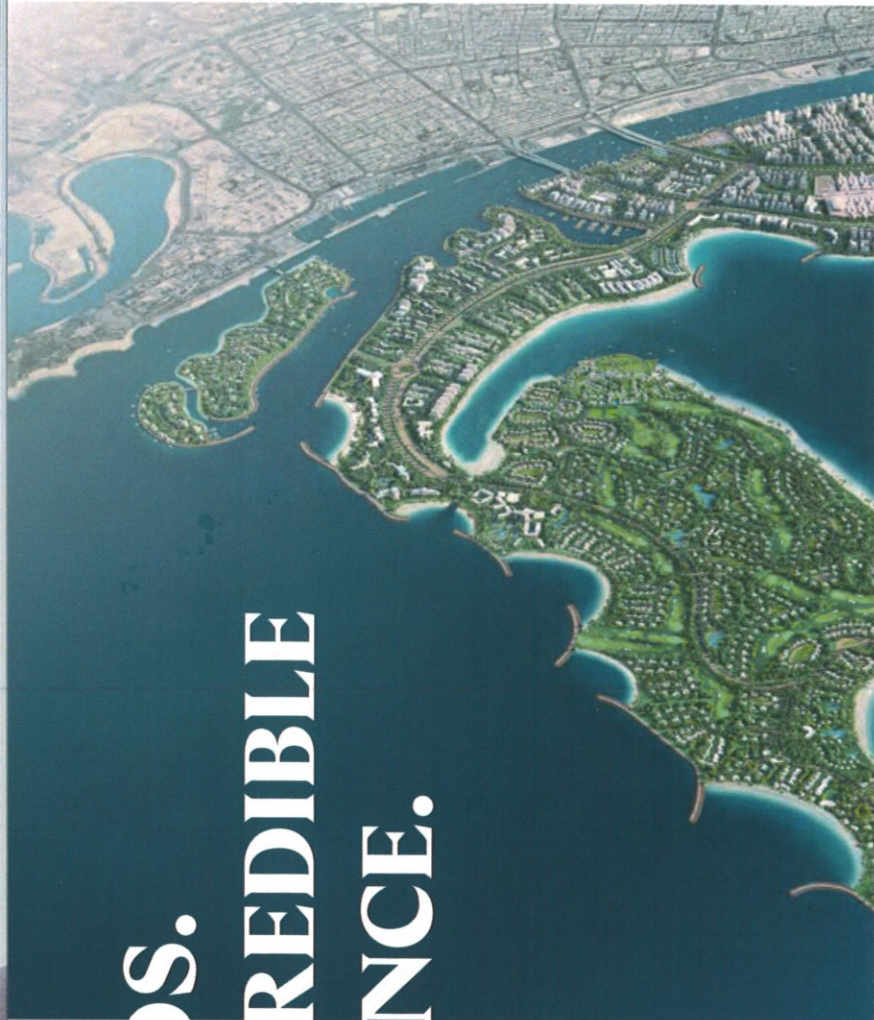
400%

MORE
PUBLIC
BEACHES

.....
Dubai Islands is all set to be a masterpiece of breath-taking landscapes, stunning architecture and a holistic lifestyle experience that brings together the best that the world has to offer. And more importantly, a hallmark of Dubai-life at its finest.



**5 ISLANDS.
ONE INCREDIBLE
EXPERIENCE.**



A magnificent group of 5 Islands located at the northern most part of Dubai, these islands stretch across an expanse of 17 sq kms and contribute an additional 50 kms to Dubai's coastline. Together, the islands offer 21 kms of stunning beachfront real estate that is the perfect blend of sandy shores, inviting waters and access to a world of amenities.

The islands are an amalgamation of residential and resort communities, infused with a rich plethora of retail, cultural, leisure and wellness experiences that enrich life. From the lively pulse of the Central Island to the rejuvenating resort vibes of Shore Island, incredible golfing by the beach on Golf Island, to the vivacious waterfront of the Marina Island and finally the opulence of Elite Island, each island is a lavish ode to life.

- 1 CENTRAL ISLAND**
- 2 SHORE ISLAND**
- 3 GOLF ISLAND**
- 4 MARINA ISLAND**
- 5 ELITE ISLAND**



17
SQ KMS
**OF EXQUISITE
OPPORTUNITIES**

50
KMS
**PRISTINE
COASTLINE**

21
SQ KMS
**BEACHFRONT
BLISS**

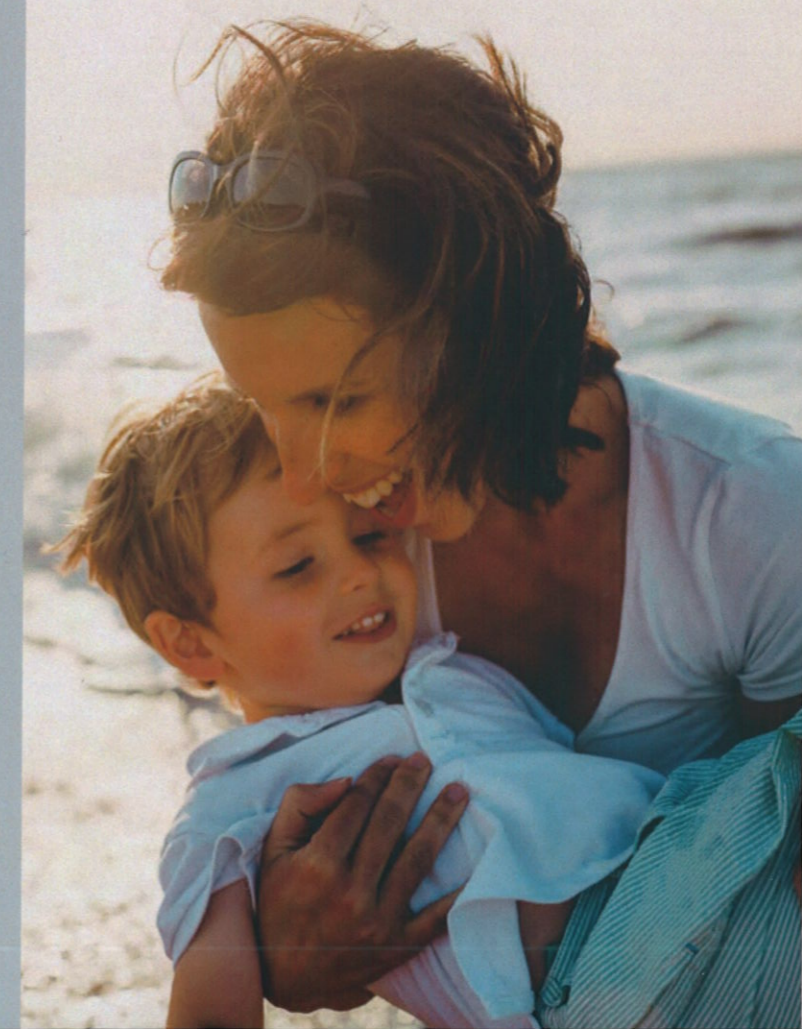


Our vision



**URBAN
SUSTAINABILITY
MEETS NATURAL
HARMONY**

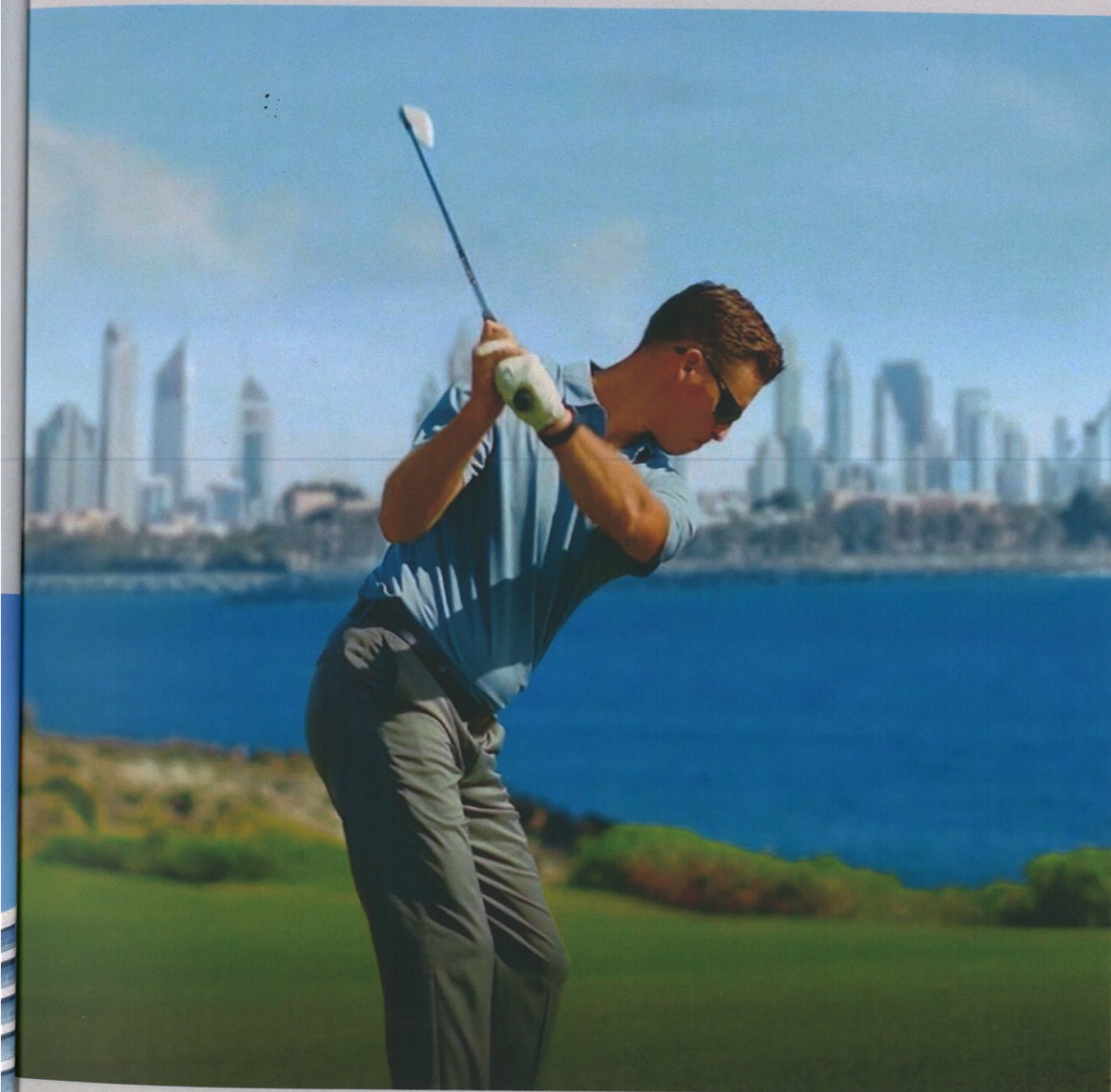
**HARMONIOUS
ISLAND
LIFESTYLE
BUILT AROUND
TOGETHERNESS**





**VIBRANT BEACH
RESIDENCES & RESORT
EXPERIENCES**





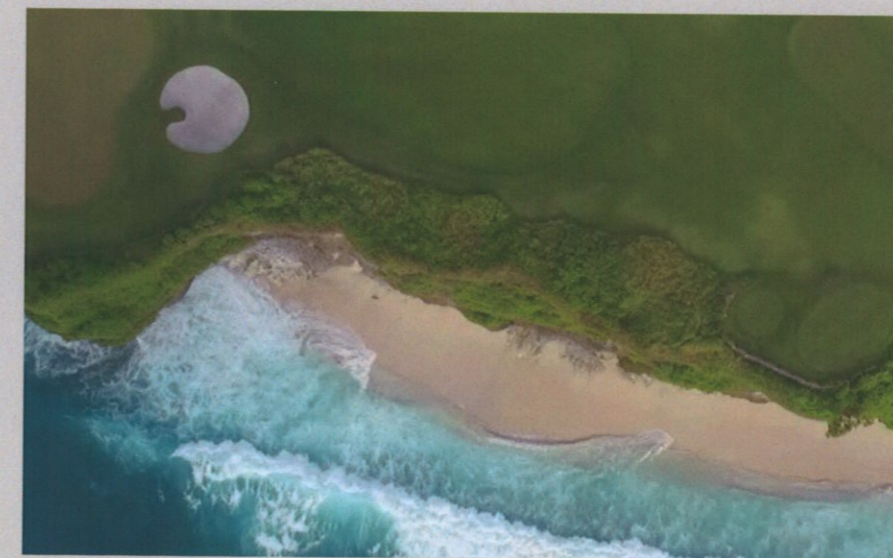
.....
**A THRIVING
SPORTS
CULTURE**



.....
**REJUVENATING
VACATION
DESTINATION
FOR LUXURY
ESCAPES**



.....
**MAKING
WELLNESS A
WAY OF LIFE**





**A GLOBAL COMMUNITY
FULL OF WORLD CLASS
EXPERIENCES**



CONNECTIVITY OF THE CITY. SERENITY OF THE SEA.

Dubai Islands enjoys the unique geographical advantage of being close to the heart of the city, yet far enough to nourish its Island soul. The islands are easily accessible from the mainland via road and sea, and within easy reach of Dubai's iconic landmarks, historical sites and popular neighborhoods. The drive to the islands is all the more spectacular by the marvelous new **Infinity Bridge** that links the islands to the city. Connectivity within the Islands is just as easy, with seamless travel between each Island through well-connected bridges, and great waterfront access for cruises and water transportation.



38,000+

RESIDENTIAL
HOMES

9

MARINAS

21 kms

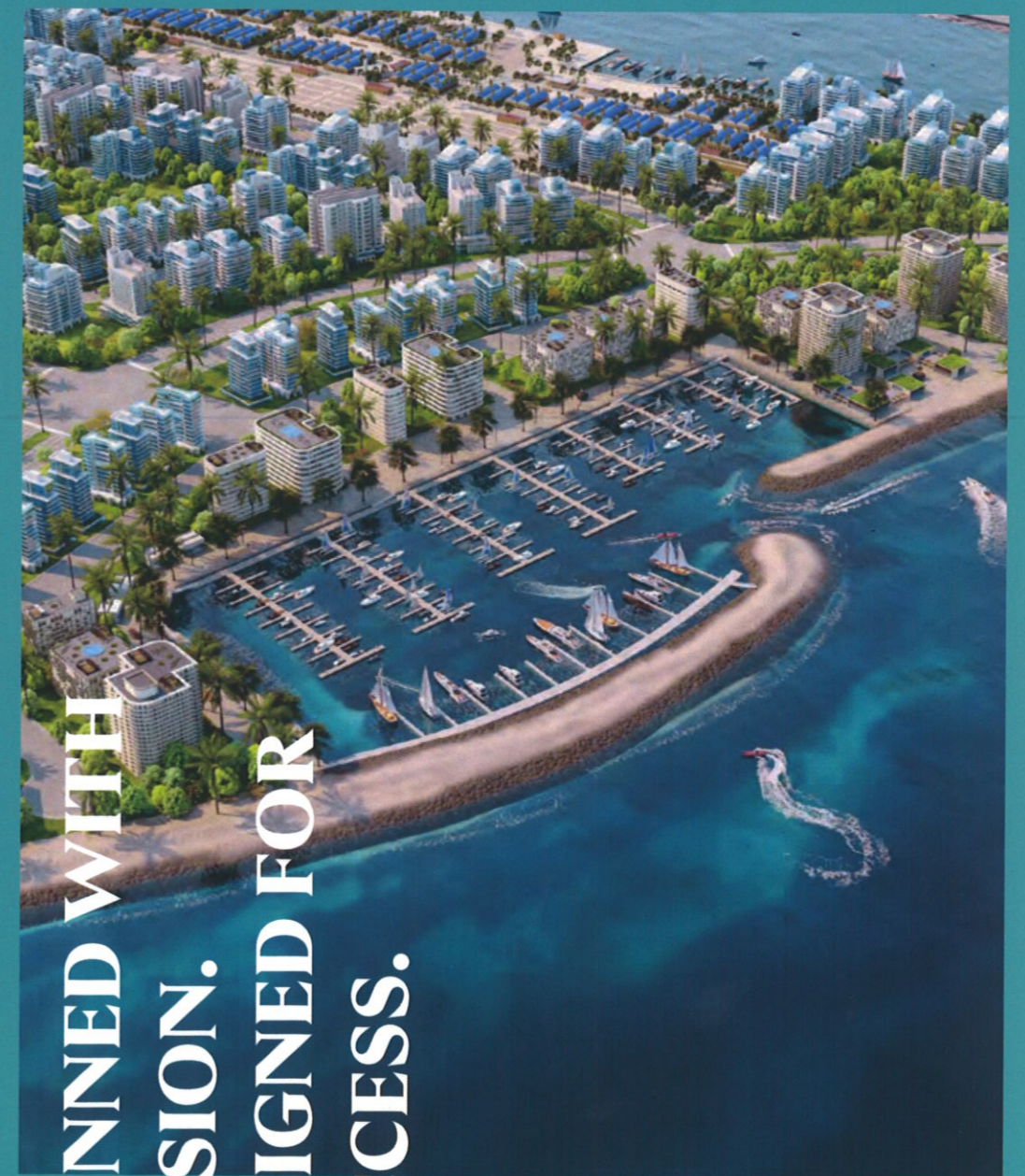
OF PRISTINE
BEACHES

87

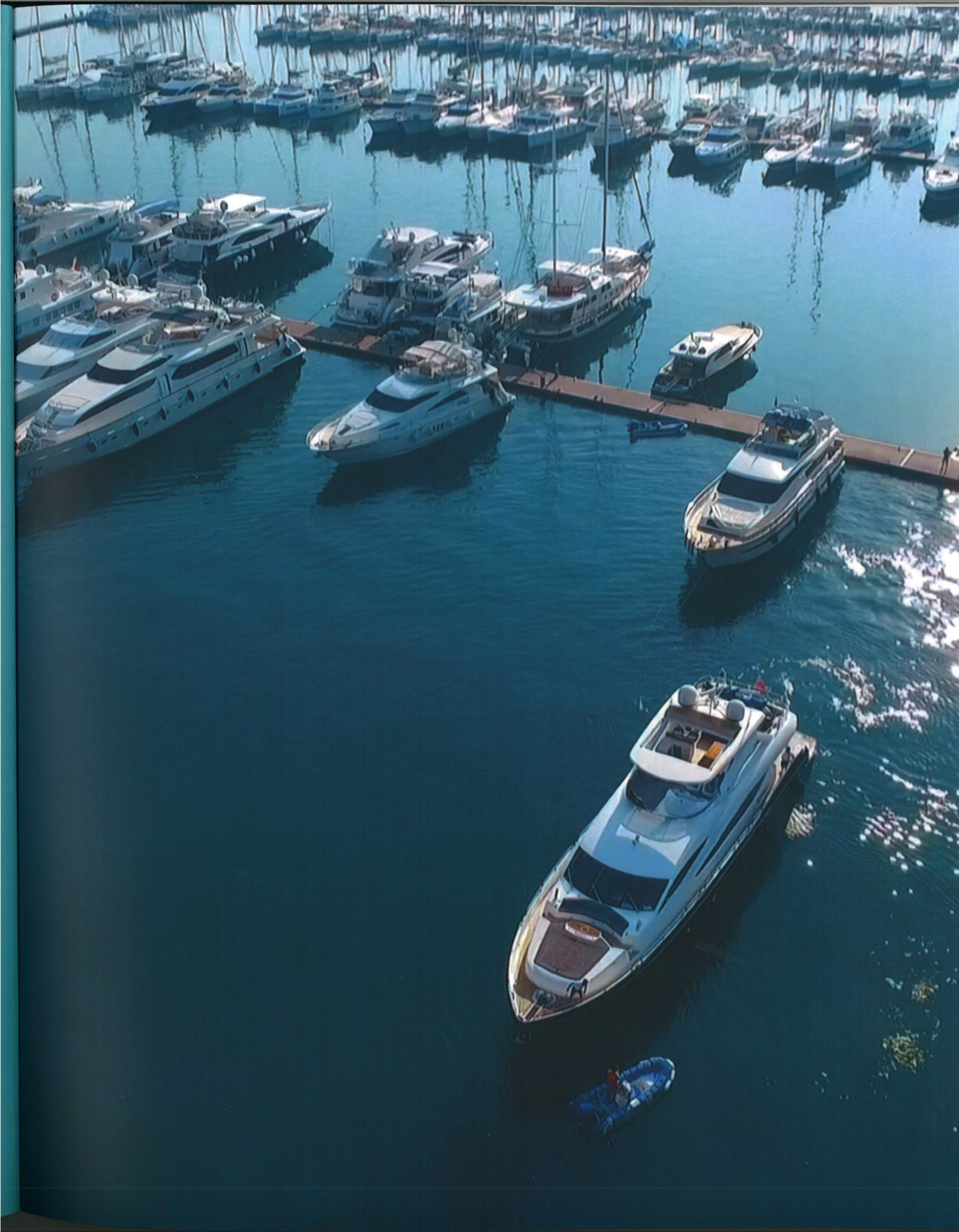
RESORTS
& HOTELS

2

GOLF COURSES
18-HOLE / 9-HOLE
GOLF COURSE



PLANNED WITH
PASSION.
DESIGNED FOR
SUCCESS.



SAIL THE SEAS WITH EASE.

Dubai Islands Marinas.

Dubai Islands welcomes seafaring guests with 9 vibrant and luxurious marinas that offer 1300 berths, world-class maritime facilities, state of the art technical facilities and the finest security. The islands have both residential as well as commercial marinas, designed to accommodate all kinds of yachts and ships coming and going from the Arabian Gulf that surrounds us.

9

MARINAS

1300

BERTH CAPACITY

CENTRAL ISLAND, WHERE LIFE HAPPENS.

The Central Island is the first of the islands and the spectacular center of life and entertainment. It is designed to meet Dubai's 2025 tourism aspirations of up to adding 20,000 new hotel rooms to our coast.

A fusion of residential and retail spaces, the Central Island offers an ambience that is unparalleled. A world class mall, upcoming art and cultural district, water park, beach-front hotels and more will make this island one of Dubai's most effervescent locations. Stepping out onto the beach will add a new dimension of fun with an exhilarating surf park and watersports opportunities that extend from the shore out to the blue sea.





CENTRAL ISLAND : THE NEW CENTRE OF EXCITEMENT.



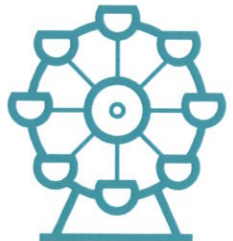
WATERSPORTS HUB



BEACH CLUB HOTSPOT



EXHILARATING SURFING PARK



THEME PARK & WATER PARK

15,000 – 20,000
NEW HOTEL ROOMS EXPECTED BY 2025



SUN, SAND AND SHOPPING

With curated mall and retail experiences.

Indulge in some retail therapy at the heart of Dubai Islands with a world-class mall and diverse retail spaces. A curation of homegrown and international brands, to give shoppers a taste for opulence, complemented with the best dining and entertainment options.



SAVOUR SUCCESS BY THE SEA

At a world class tourism destination.

Escape the everyday and arrive in a world of extraordinary luxury. The central Island is an urban oasis full of bespoke experiences and incomparable beaches with soft sand shores and sparkling blue water to draw visitors from across the world. Water parks and theme parks will add a whole new dimension of fun and attractions to the Island.

37

RESORTS & HOTELS





A VIBRANT LIFE

In a thriving community.

On the Central Island, our residential communities are an intuitive expression of contemporary yet stylish living, with planned open spaces, an oasis of greenery, clubhouses and retail spaces that make it a highly coveted address.

30,000+

MID & HIGH-DENSITY
APARTMENTS



FEEL THE RUSH

With thrilling watersports avenues.

The master developer, Dubai-based Nakheel Group is a world-leading master developer whose innovative, landmark projects form an iconic portfolio of master communities and residential, retail, hospitality and leisure developments that are pivotal to realising Dubai's vision.

2.8
Kms

OF PRISTINE
BEACHES



DUBAI ISLANDS - A

- BEACH RESORT (HOTEL)
- WATER EDGE (HOTEL)
- HOTEL
- RESIDENTIAL (APARTMENT)
- MIXED USE (RESIDENTIAL WITH RETAIL)
- MIXED USE (RESIDENTIAL - RETAIL - HOTEL)
- MIXED USE (RESIDENTIAL - COMMERCIAL - HOTEL)
- RESIDENTIAL - RETAIL - OFFICE
- MALL / SHOPPING CENTRE / ENTERTAINMENT
- COMMUNITY (MASJID)
- EDUCATION (SCHOOL)
- COMMUNITY FACILITIES (POLICE, CIVIL DEFENSE, AMBULANCE)
- COMMUNITY (HOSPITAL)
- COMMUNITY (MARINA FACILITIES)
- COMMUNITY FACILITIES (BOARDWALK)
- COMMUNITY FACILITIES (BEACH)
- ROCK EDGE
- PETROL STATION
- CAR PARKING
- OPEN SPACE / PARKS
- UTILITY
- FUTURE MIXED USE DEVELOPMENT

- MARINA
- BEACH FRONT HOTEL/RESORT
- BEACH
- MARINA HOTELS & APARTMENTS
- MALL AND ENTERTAINMENT
- LUXURY LIVING



DUBAI ISLANDS



ABOUT NAKHEEL

The master developer, Dubai-based Nakheel Group is a world-leading master developer whose innovative, landmark projects form an iconic portfolio of master communities and residential, retail, hospitality and leisure developments that are pivotal to realising Dubai's vision.

Nakheel's waterfront projects, including the world-famous, award-winning Palm Jumeirah, have added more than 300 kilometres to Dubai's original, 70km coastline, paving the way for the development of hundreds of seafront homes, resorts, hotels and attractions.

Nakheel's master developments span 15,000 hectares, accommodate nearly 300,000 people and provide a growing range of destinations, attractions and facilities for Dubai's citizens, residents and tourists. They include Palm Jumeirah, The World, Jumeirah Islands, Jumeirah Park, Jumeirah Village, Al Furjan, The Gardens, Discovery Gardens, Jebel Ali Village, Dragon City, Nad Al Sheba Villas, Warsan Village and International City. Dubai Islands is a new destination for tourism, living and leisure at Dubai's oldest, most traditional trading hub.

