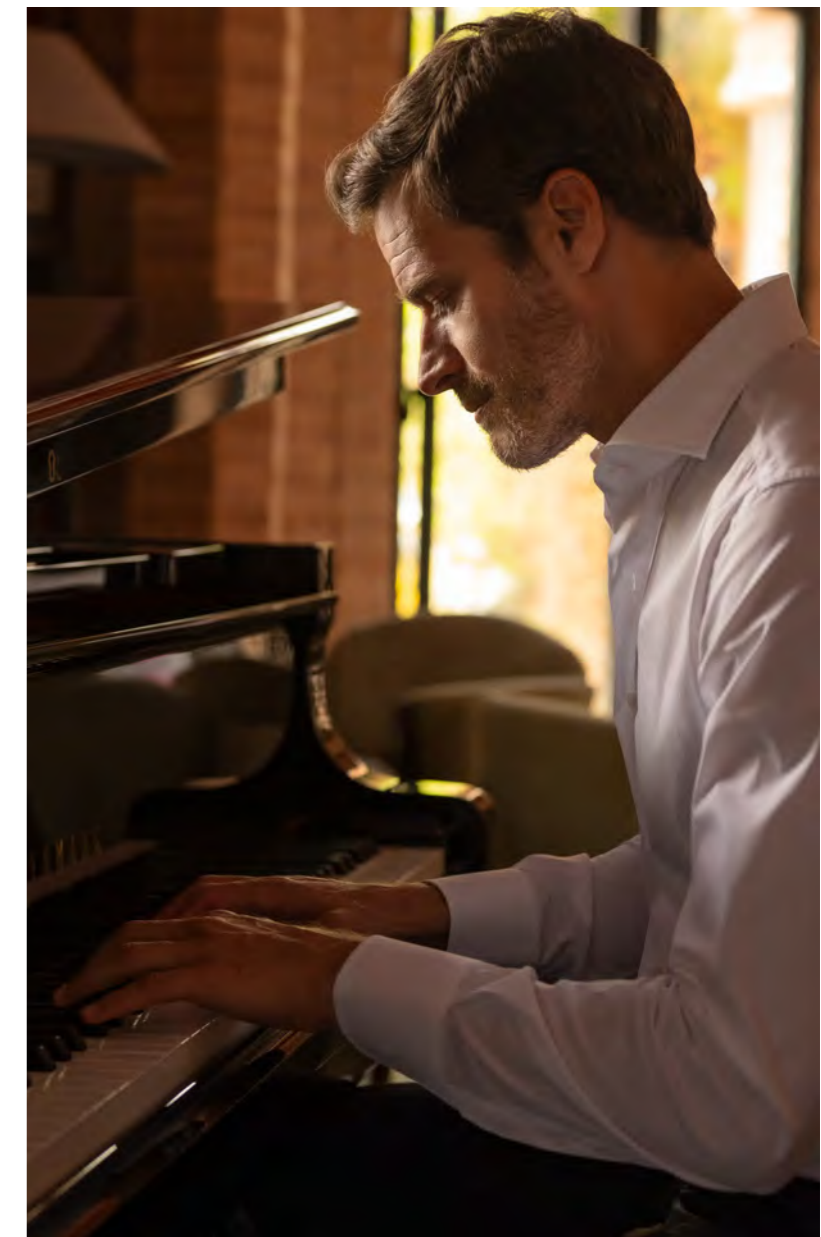




BELGRAVIA GARDENS

# LIVE BY DESIGN

Since 2014, our unique design philosophy has distinguished us in the industry. Over the years, Ellington has become known for quality, integrity, and style. Each property in our prestigious international portfolio is thoughtfully crafted to inspire residents to live intentionally. Belgravia Gardens, our latest development located in Falcon City of Wonders, is a self-sustaining sanctuary where every convenience is right at your doorstep—an inspiring oasis that you'll never want to leave.



# DUBAILAND

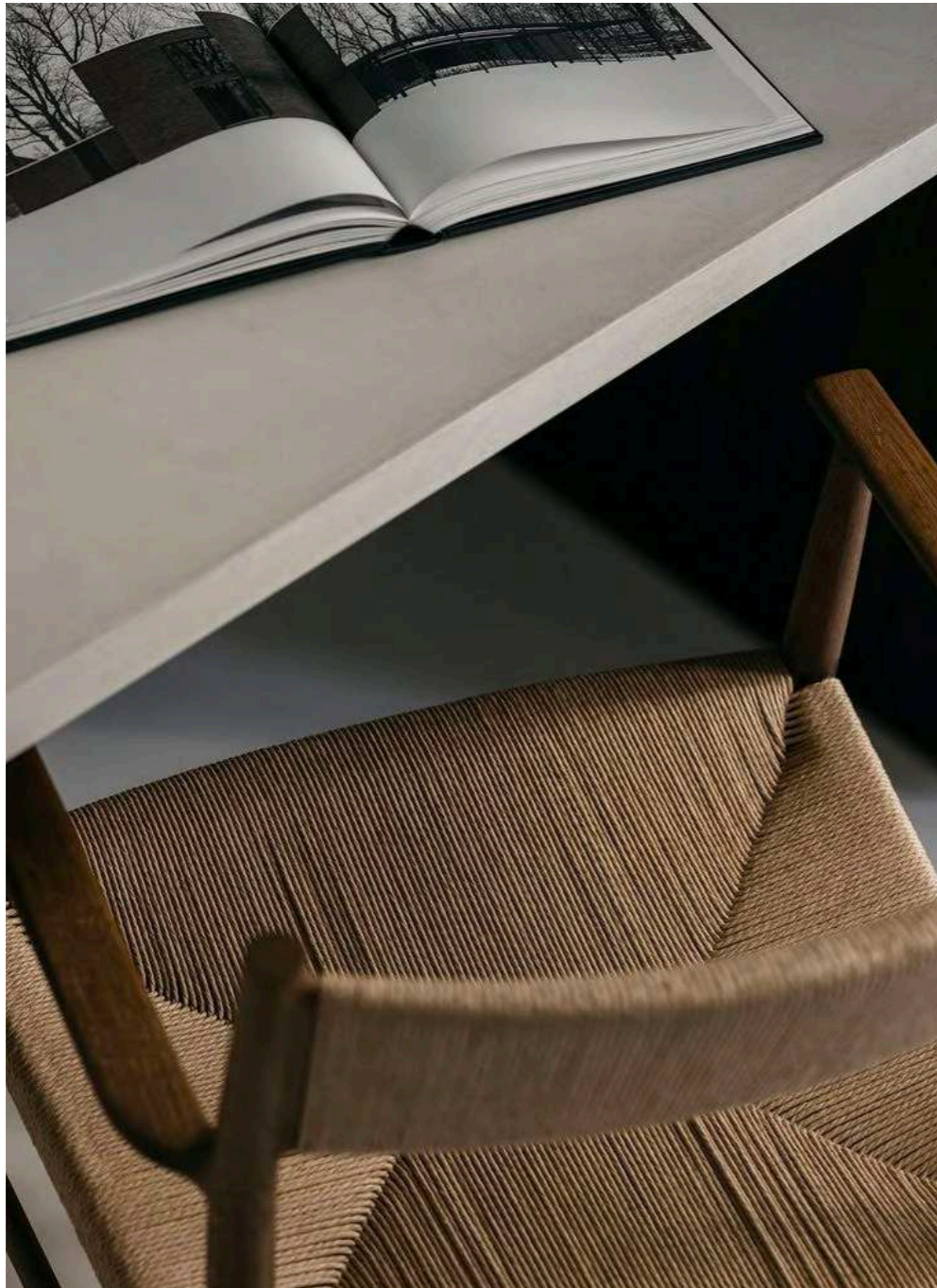


Belgravia Gardens is nestled in the heart of Dubailand, a community that embodies the perfect synergy of urban energy and serene living. Surrounded by lush landscapes and thriving neighborhoods, Dubailand is more than a location – it's a lifestyle. This rapidly evolving destination offers seamless connectivity to key areas of Dubai while fostering a sense of tranquility, making it an ideal setting for those who seek a harmonious balance between work, leisure, and home.

YOUR COMMUNITY,  
DESIGNED



# THE CONCEPT



At Belgravia Gardens, you're truly at the centre of it all. Whether you're hosting intimate family gatherings in your beautiful home or enjoying lively evenings with friends in the club lounge, every moment is designed for connection. Begin your day with peaceful mornings by the serene pool or unwind with leisurely strolls through lush, green gardens. In this self-sustaining community, every opportunity to relax and indulge is right at your fingertips. With each amenity just steps away and every detail thoughtfully crafted, everything flows in harmony with the rhythm of your life.



# THE FACADE



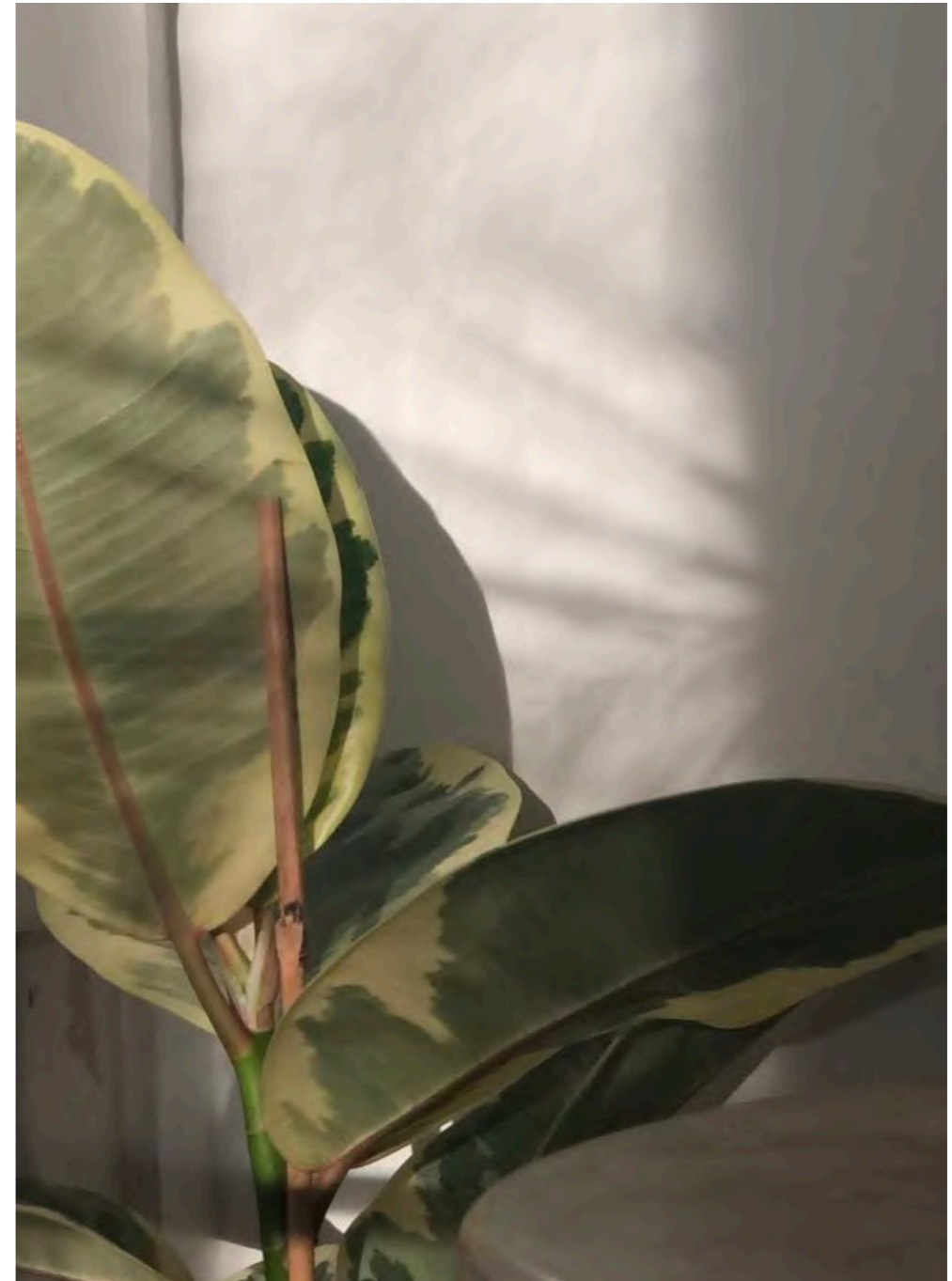
The architectural design of Belgravia Gardens tells a story of elegance and innovation. The façade features a blend of bold, modern elements with subtle, nature-inspired accents, creating a unique identity within the community. Expansive glass panels invite natural light while reflecting the beauty of the surrounding greenery. Every detail, from textured cladding to sculptural forms, has been meticulously considered, ensuring the development becomes a visual icon in Dubailand.





The main entrance of Belgravia Gardens is designed to make a lasting impression, featuring a striking double-height glass facade that allows natural light to illuminate the interiors while offering a glimpse into the sophisticated ambiance within. Flanked by a stylish café and a refined restaurant, the entrance provides convenient lifestyle options for residents and visitors alike. Thoughtfully designed landscaping with lush greenery and vibrant plantings enhances the curb appeal, creating a serene and inviting atmosphere. Warm ambient lighting and a well-paved pathway guide residents and guests seamlessly to the main doors, reflecting the development's commitment to elegance, comfort, and modern living.

## A WARM WELCOME





BELGRAVIA GARDENS

CAFÉ

RESTAURANT

GL



## RETAIL AND F&B



Belgravia Gardens elevates everyday living with its thoughtfully designed retail and F&B spaces. This isn't just a collection of shops and restaurants; it's a destination where residents and visitors can connect, unwind, and explore. From artisanal cafes to gourmet dining, the offerings are curated to reflect diverse tastes and lifestyles. The retail promenade, integrated seamlessly into the community, serves as a vibrant gathering place that fosters connection and convenience while enhancing the overall living experience.



GARDENS  
BELGRAVIA

ELLINGTON

# THE LOBBY



The lobby exudes elegance with soft neutral tones, polished concrete floors, and refined industrial accents. The welcoming reception area, inviting lounges, and stunning feature lighting combine to create a serene, sophisticated atmosphere.

The lobby welcomes you with a refined sense of calm. Soft, neutral tones create a sophisticated atmosphere. Polished concrete floors provide a serene foundation, while striking works of art and subtle industrial accents add character and depth. The space is designed to foster a sense of tranquillity and elegance, offering a perfect setting for both reflection and connection.



ELLINGTON

# URBAN BEACH



The beach pool is a tranquil retreat where sand and water come together in beach-like bliss. Its sandy shores invite relaxation, while the gentle waves of the pool evoke the calming rhythm of the sea. A place to unwind and embrace the serenity of beachside living, the beach pool offers an idyllic escape to rejuvenate both body and spirit. Surrounded by lush landscaping and comfortable seating areas, it's the perfect spot to relax, socialize, or simply enjoy the peaceful atmosphere.



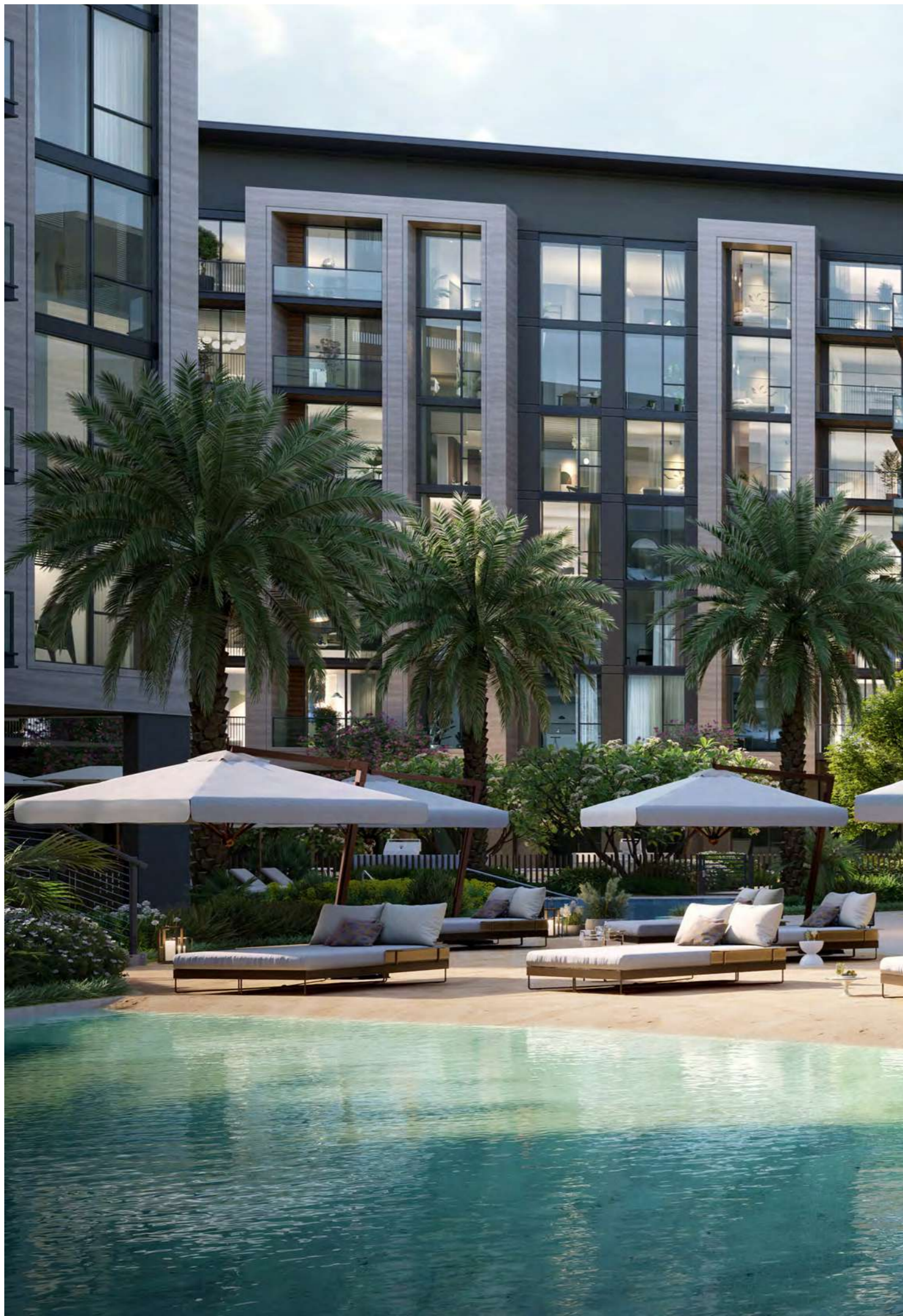


# THE LAZY RIVER

The lazy river at Belgravia Gardens is a central feature that brings the entire community together. Flowing seamlessly between all four clusters, it creates a sense of connection and continuity throughout the development. Each cluster has its own individual pool deck, offering residents exclusive spaces to relax and unwind, while the lazy river weaves these areas together and culminates in a larger communal pool. This thoughtfully designed feature not only enhances the aesthetic appeal of the community but also provides a tranquil escape where residents can enjoy leisurely moments in harmony with their surroundings.







# LEISURE POOL



The pools, interconnected by a lazy river, create a serene aquatic retreat. This tranquil space offers a seamless escape, where you can drift at your own pace or simply bask in the soothing atmosphere. The harmonious design of the pools enhances the feeling of openness, making it the perfect setting to unwind and enjoy the art of leisure. Surrounded by lush landscaping and gentle water features, the area invites you to relax in a peaceful environment, embracing both relaxation and natural beauty.

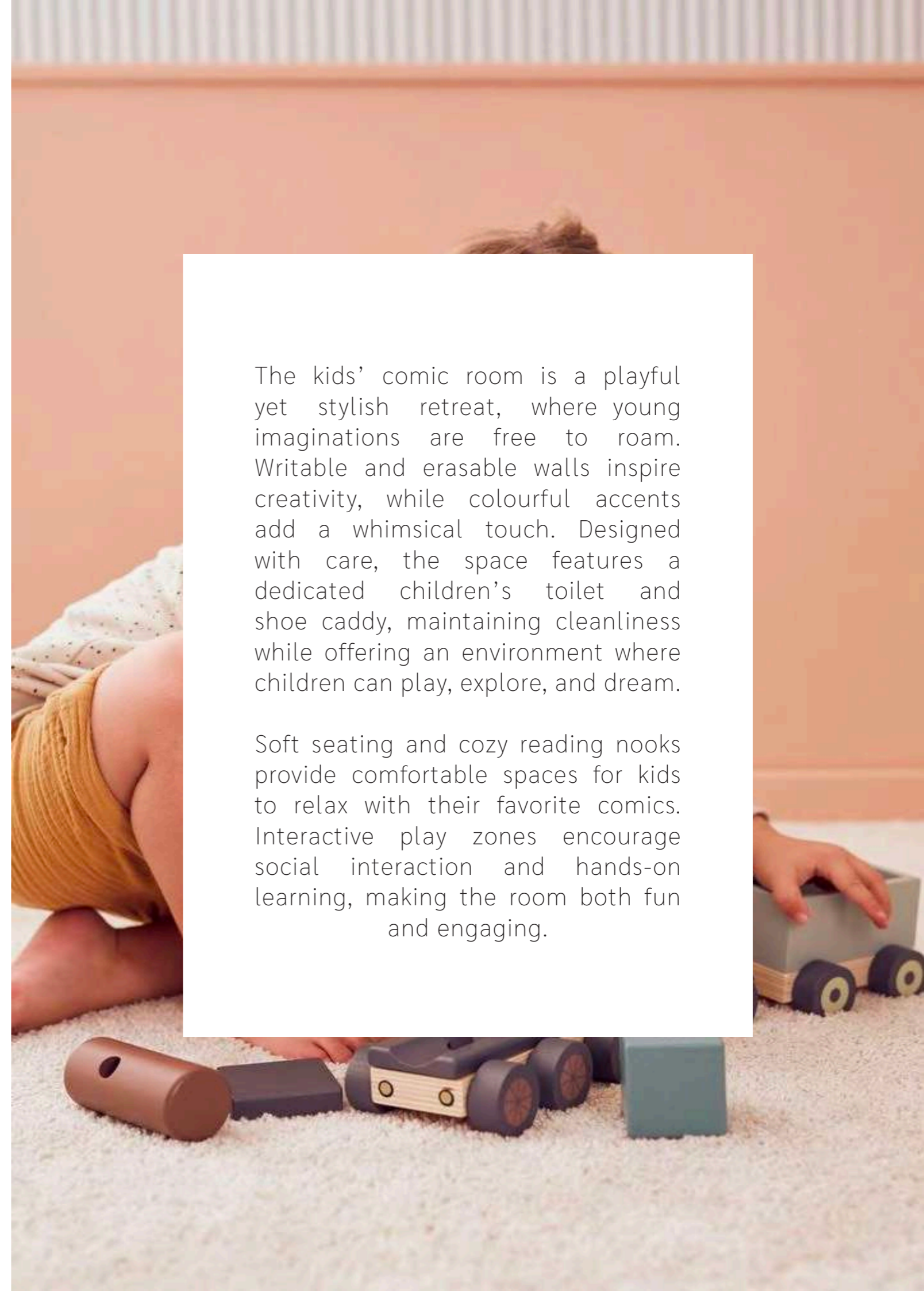


# KIDS PLAY AREA



The kids' comic room is a playful yet stylish retreat, where young imaginations are free to roam. Writable and erasable walls inspire creativity, while colourful accents add a whimsical touch. Designed with care, the space features a dedicated children's toilet and shoe caddy, maintaining cleanliness while offering an environment where children can play, explore, and dream.

Soft seating and cozy reading nooks provide comfortable spaces for kids to relax with their favorite comics. Interactive play zones encourage social interaction and hands-on learning, making the room both fun and engaging.





# KIDS NAP STATION



The nap station and sleepover pods offer a serene escape designed for rest and rejuvenation. Cloud and hat pendants create a calming ambience, while sunken seating with safety balustrades offers peace of mind. Transformable bunk beds double as tables for versatility, and cosy sofa beds set the stage for memorable sleepovers. Graphic walls add a playful touch, making this a space where comfort and creativity meet in perfect harmony. Soft lighting and plush textiles enhance the soothing atmosphere, inviting relaxation and deep, restful sleep.





# SPORTS COURTS

The sports zone offers a dynamic and energizing space designed to inspire both fun and fitness. Featuring a tennis court, padel court, and a half basketball court, it provides the perfect setting for friendly competition, skill-building, and personal achievement. Whether you're refining your serve, engaging in a fast-paced match, or enjoying a casual game with friends, this versatile space encourages movement, social connection, and a vibrant, active lifestyle. Thoughtfully designed seating areas nearby also allow players and spectators to relax and enjoy the lively atmosphere.







# CLUBHOUSE



The clubhouse offers a refined setting for both relaxation and socializing, blending comfort with sophisticated design. A striking feature staircase leads to a stylish bar and fully equipped kitchen, ideal for hosting events or enjoying drinks. Cozy lounge seating invites conversation and relaxation, while private dining spaces provide an elegant retreat for more intimate gatherings, with every detail carefully crafted to foster connection and create lasting memories. The thoughtfully designed layout ensures a seamless flow between spaces, making it perfect for both small gatherings and larger celebrations.



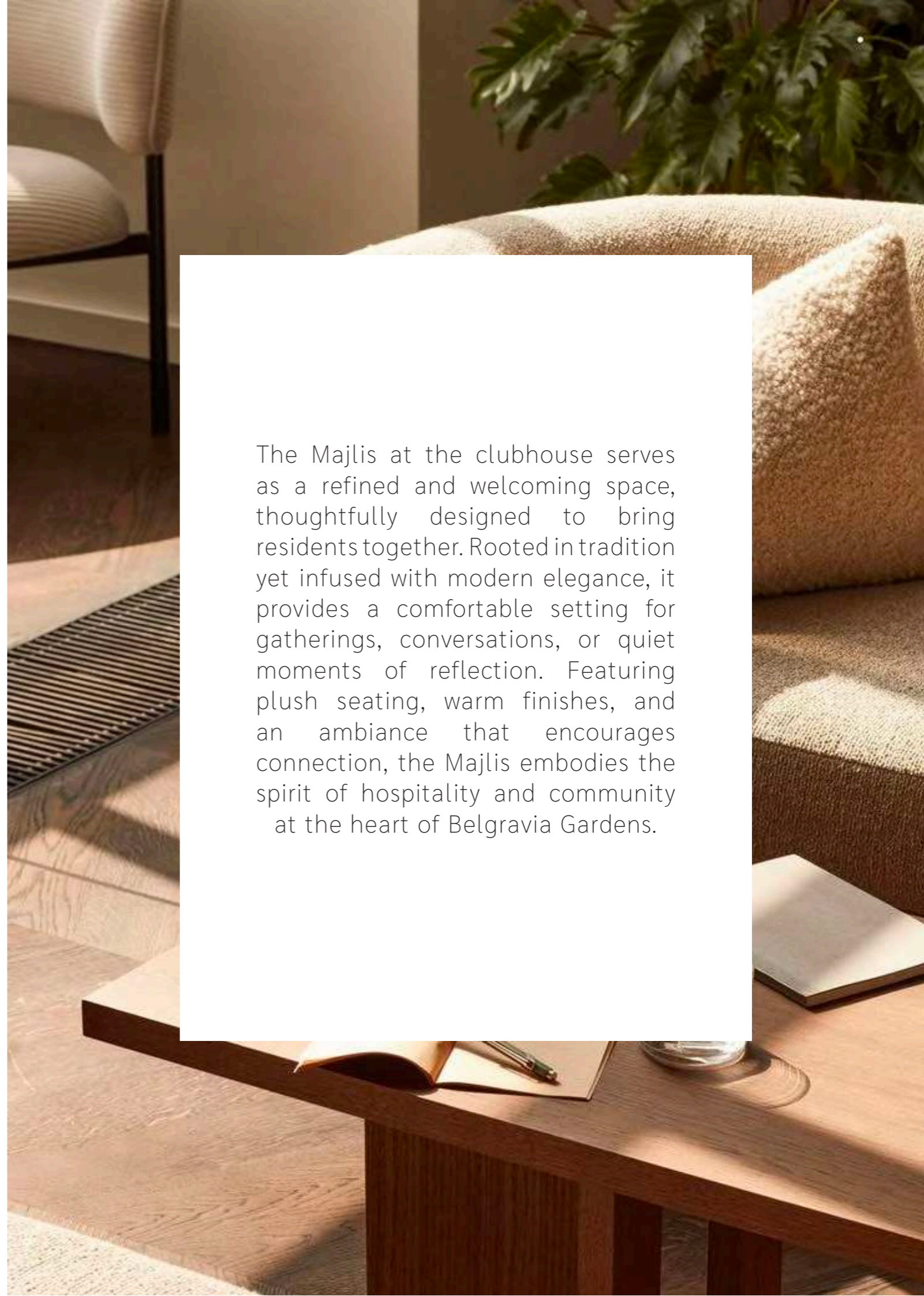
CLUBHOUSE



# MAJLIS



The Majlis at the clubhouse serves as a refined and welcoming space, thoughtfully designed to bring residents together. Rooted in tradition yet infused with modern elegance, it provides a comfortable setting for gatherings, conversations, or quiet moments of reflection. Featuring plush seating, warm finishes, and an ambiance that encourages connection, the Majlis embodies the spirit of hospitality and community at the heart of Belgravia Gardens.

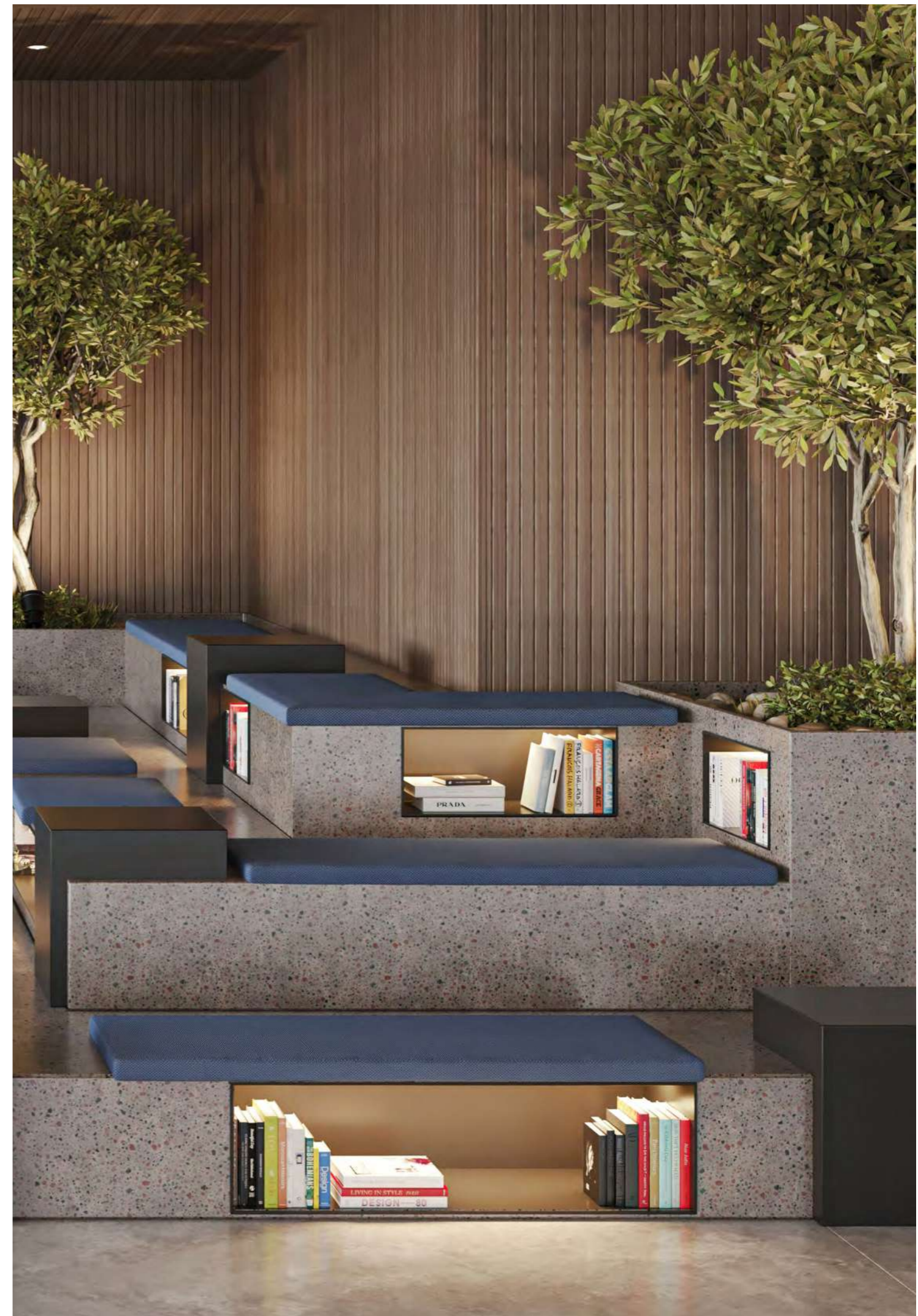




# CO-WORKING HUB



The co-working hub offers an inspiring setting for productivity and collaboration. With tiered seating, phone booths, and quiet rooms, it provides a range of spaces to suit every need. Shared desks with charging ports encourage seamless connection, while individual seating nooks offer moments of focus and solitude. Thoughtfully designed feature lighting creates a warm, inviting atmosphere, ensuring the perfect balance of work and comfort.





The private dining space within the clubhouse offers an intimate and sophisticated environment for hosting special occasions or enjoying exclusive culinary experiences. With a fully equipped chef's kitchen, elegant furnishings, and seamless service capabilities, it is perfect for celebrating milestones or entertaining guests. The space has been carefully designed to elevate the dining experience, providing both style and functionality in an unforgettable setting.

## PRIVATE DINING





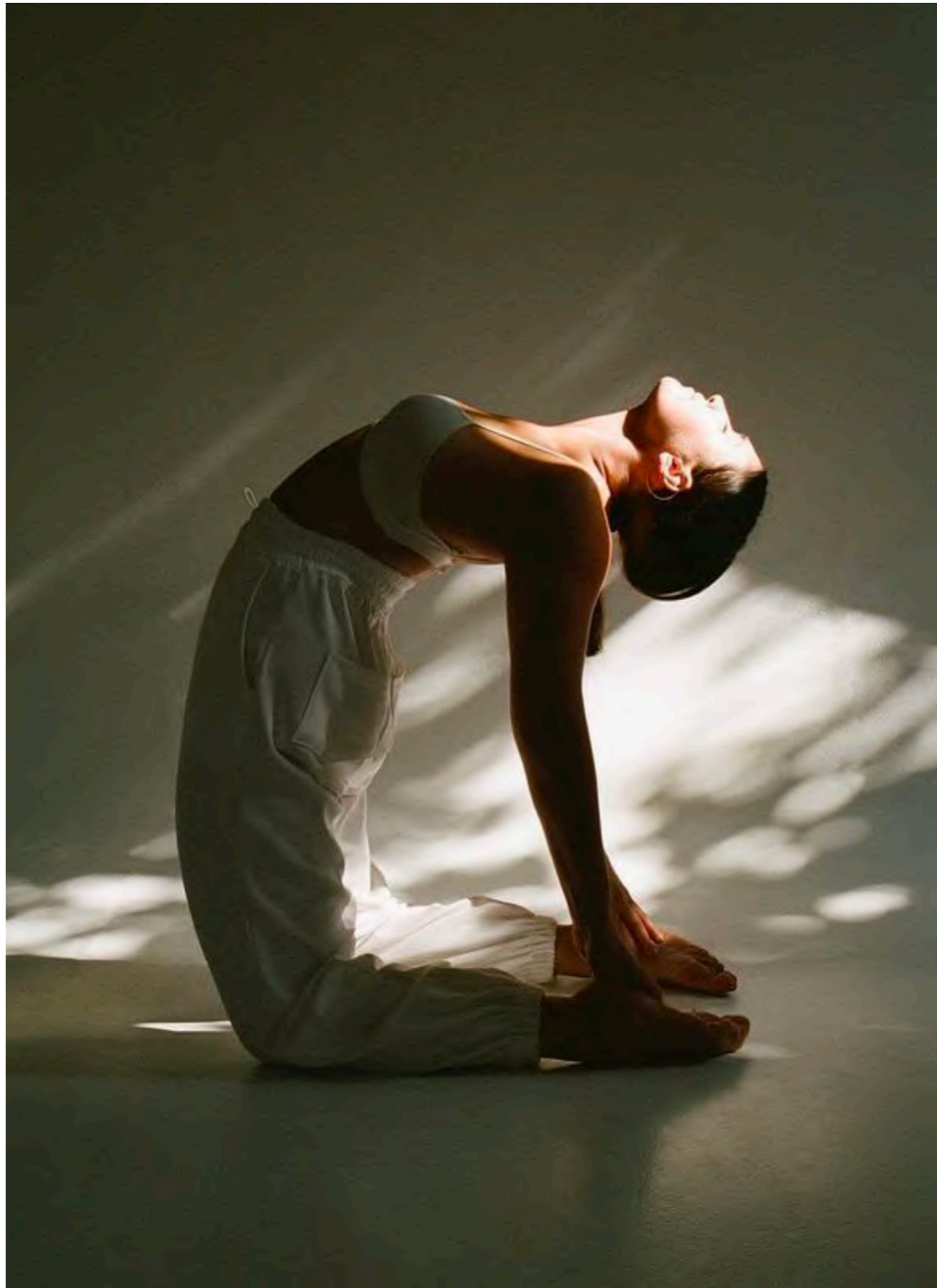
# CINEMA



The cinema offers an elegant escape into the captivating world of film, blending luxury and comfort for a memorable viewing experience. Soft, ambient lighting sets a warm tone, while plush lounge-style seating invites residents to relax and unwind. A state-of-the-art digital screen and high-quality sound system showcase the latest features, creating a cozy and immersive atmosphere designed for pure enjoyment. Thoughtful touches, such as rich textures and stylish décor, further elevate the space, making every movie night a special occasion.



# FITNESS STUDIO



The Yoga Room at Belgravia Gardens offers a serene space for balance and mindfulness. With natural light, minimalist design, and beautiful design accents, it's the perfect retreat for calming flows or energising sequences.

The fitness studio offers a dynamic space that welcomes you into a world of wellness, where state-of-the-art Technogym equipment supports your fitness journey. Neon lighting adds an invigorating touch, while the dedicated yoga area fosters calm and focus. Whether cycling through virtual landscapes or finding your centre, every corner is designed to inspire movement and mindfulness.



# GAME STATION



The game station at Belgravia Gardens is a vibrant hub of activity, designed to bring residents together through recreation and friendly competition. Equipped with an array of engaging features, including an electronic gaming table, table tennis, billiards, and a mini-golf setup, it offers something for everyone. The dedicated board game area fosters strategic play and social interaction, while the unique sub soccer table and chair add a dynamic twist to traditional gaming. A standout feature, the visually captivating Plinko wall, invites participants to test their skills and enjoy a playful challenge. Thoughtfully designed to balance entertainment and community connection, the game station is a space where relaxation and fun come together seamlessly.





# RESIDENCES

Each home is thoughtfully designed to offer modern living with open layouts, premium finishes, and ample natural light. Whether you're looking for a cozy studio, a comfortable one-bedroom, or a more expansive two or three-bedroom apartment, Belgravia Gardens provides a perfect living space for individuals, couples, and families alike.

# SOPHISTICATED

Elegantly designed with high ceilings and abundant natural light, the living rooms offer a spacious and inviting atmosphere. A stone dining tabletop adds refinement, while the modular sofa, modern side tables, and plush rugs create a stylish and comfortable setting. Thoughtful shelving and a sleek TV unit combine form and function, making the space perfect for both relaxation and entertaining.

Large windows frame picturesque views, enhancing the connection to the outdoors and further enriching the serene and open ambiance of the living room.



# LIVING SPACES



# CULINARY MASTERPIECES



Designed for both beauty and practicality, the kitchens feature innovative storage solutions, including a ledge for spices and creative plate storage, ensuring easy access and organization. Floor-to-ceiling cabinetry with integrated appliances creates a sleek, seamless modern look, while timber and stone countertops add natural warmth. Thoughtful lighting and design details enhance the overall aesthetic, making the kitchen a stylish and functional centerpiece in the home.



# YOUR SERENE



# SANCTUARY

The bedrooms offer a serene retreat with soft, natural tones and thoughtful details. Padded headboards, sleek metal frames, and integrated bedside lighting create a calming atmosphere. Recessed wardrobe doors and niched vanities blend elegance with practicality, while wall-mounted mirrors and open shelving enhance the room's sense of space.

Large windows allow natural light to flood the room, further enhancing the tranquil ambiance and creating a seamless connection with the outdoors.





# SLEEK BATHROOMS



The bathrooms boast sleek glass vanities, stylish medicine cabinets, and thoughtful towel rail designs. Wall-mounted shower trays maximize space, while elegant details like tile strips above the cabinets complete the bathrooms. Soft lighting highlights the contemporary design, adding warmth and creating a serene environment. The use of high-quality materials ensures both durability and luxury, making each bathroom a perfect blend of style and practicality. Every element is carefully selected to offer both aesthetic appeal and functionality, ensuring a space that is as beautiful as it is efficient.





The powder room is a stylish and functional space, thoughtfully designed with clean lines, tasteful finishes, and a minimalist aesthetic. The carefully selected materials, from sleek countertops to elegant fixtures, create a fresh and modern atmosphere. It offers a refined yet practical setting, ideal for everyday use, ensuring both comfort and sophistication. The layout maximizes space, making it a convenient and inviting area, whether for a quick refresh or to impress guests.

The overall design enhances the sense of openness, making the powder room feel both spacious and welcoming.



# PERFECT



# SETTING

