



# RABDAN GATES

By Rabdan Developments  
[WWW.RABDANDEVELOPMENTS.AE](http://WWW.RABDANDEVELOPMENTS.AE)

800RBDN





*Where  
Your Address  
Is Your Signature*





## *Where Your Address is Your Signature*

Rabdan Gates is an iconic new residential address by Rabdan Developments, located in the heart of Majan, Dubai. Rising gracefully over 26 floors, this architectural gem features 437 elegantly designed residential units and 8 retail spaces, offering a selection of studios, 1-bedroom, and 2-bedroom and 3-bedroom apartments.

Blending modern urban living with nature-inspired amenities, Rabdan Gates is a sanctuary of sophistication and leisure. With thoughtfully integrated landscape features such as a beach pool, mini golf course, kids' play areas, and outdoor fitness zones, residents enjoy a resort-style atmosphere every day.

The crown jewel of the project lies on Level 11, where an elevated retreat awaits—featuring adult pools, a fire pit lounge, and breathtaking views. Rabdan Gates stands as a beacon of modern living and vibrant community, where comfort, connectivity, and creativity come together.



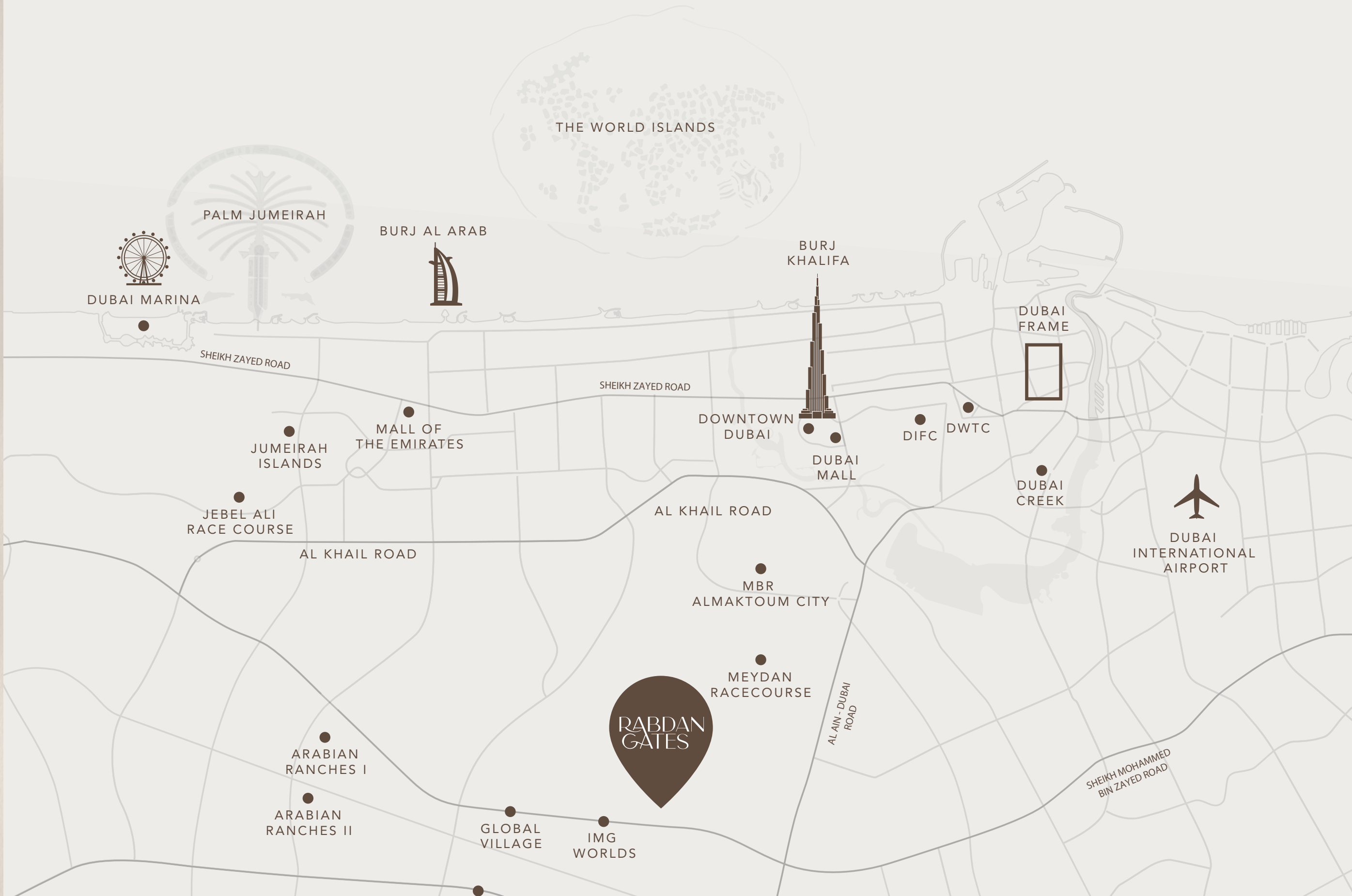
# Prime Location

Perfectly positioned in majan, one of Dubai’s fastest-growing lifestyle communities, Rabdan gates offers seamless access to Sheikh Mohammed Bin Zayed Road, Hessa Street, and Al Khail Road, connecting residents effortlessly to every corner of the city. just minutes from Global Village, IMG Worlds, and Dubai Hills Mall, the location blends everyday convenience with exceptional lifestyle appeal, surrounded by top schools, healthcare, and essential services.

# Landmarks

Dubai Mall	20 min
Dubai Frame	20 min
Dubai International Airport	15 min
Burj El Arab	20 min
Marina Beach	20 min
Global Village	10 min
IMG World	8 min
AlMaktoum International Airport	25 min

## Majan , Dubai















# Sink In Serenity

Life at Rabdan Gates is a lifestyle experience in itself. Beyond striking design, it's the world-class amenities that truly distinguish this community.

Imagine an infinity pool that melts into the horizon—a peaceful rooftop escape that invites you to unwind. Complemented by lush landscaped gardens and a modern fitness center, every feature is thoughtfully designed to elevate daily living.

Here, boundaries dissolve, and life flows naturally at the edge of the infinite.







# Amenities

A lifestyle enriched with thoughtfully curated amenities.  
enjoy a harmonious blend of leisure, wellness, and recreation designed  
to elevate everyday living.



Kids Pool



Climbing wall



BBQ Area



Outdoor Fitness



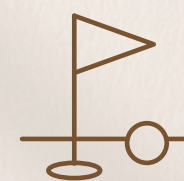
Indoor/Outdoor  
Kids play Area



Sand Beach Pool



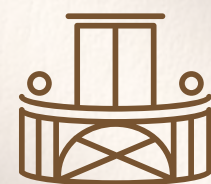
Club Lounge



Mini Golf



Water Features



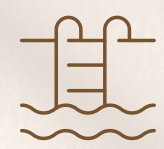
Panoramic Viewing Terrace



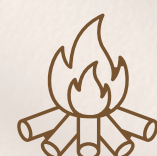
Locker Rooms



Electrical Vehicle Parking



Infinity Pool



Fire Pit



Shower



Health Club



Cinema



Retail Shops



Multipurpose Rooms



Landscaped Gardens



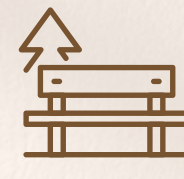
Communal Workspace



Kids Splash Park



Grand Entrance Lobby



Outdoor Seating Area





namaste







GO FOR IT

TECHNOGYM

TECHNOGYM

10 6 4 4 12 10 10









# Live in harmony

Step into spaces crafted with comfort and elegance, where every element reflects intentional design. This is more than a place to live—it's a lifestyle defined by balance, tranquility, and refined simplicity, all in harmony with nature.











# Rise above, live beyond

Step into refined spaces designed with comfort and elegance, where every detail reflects thoughtful craftsmanship. Rabdan Gates redefines residential living through its exclusive collection of amenities—from refreshing pools and lush landscaped gardens to a state-of-the-art fitness center and more—each element thoughtfully curated to elevate your daily experience.

Here, you're not just discovering a home; you're stepping into a lifestyle of balance, serenity, and timeless sophistication, seamlessly in tune with nature.





Smart,  
Sustainable  
Homes  
Crafted  
For you

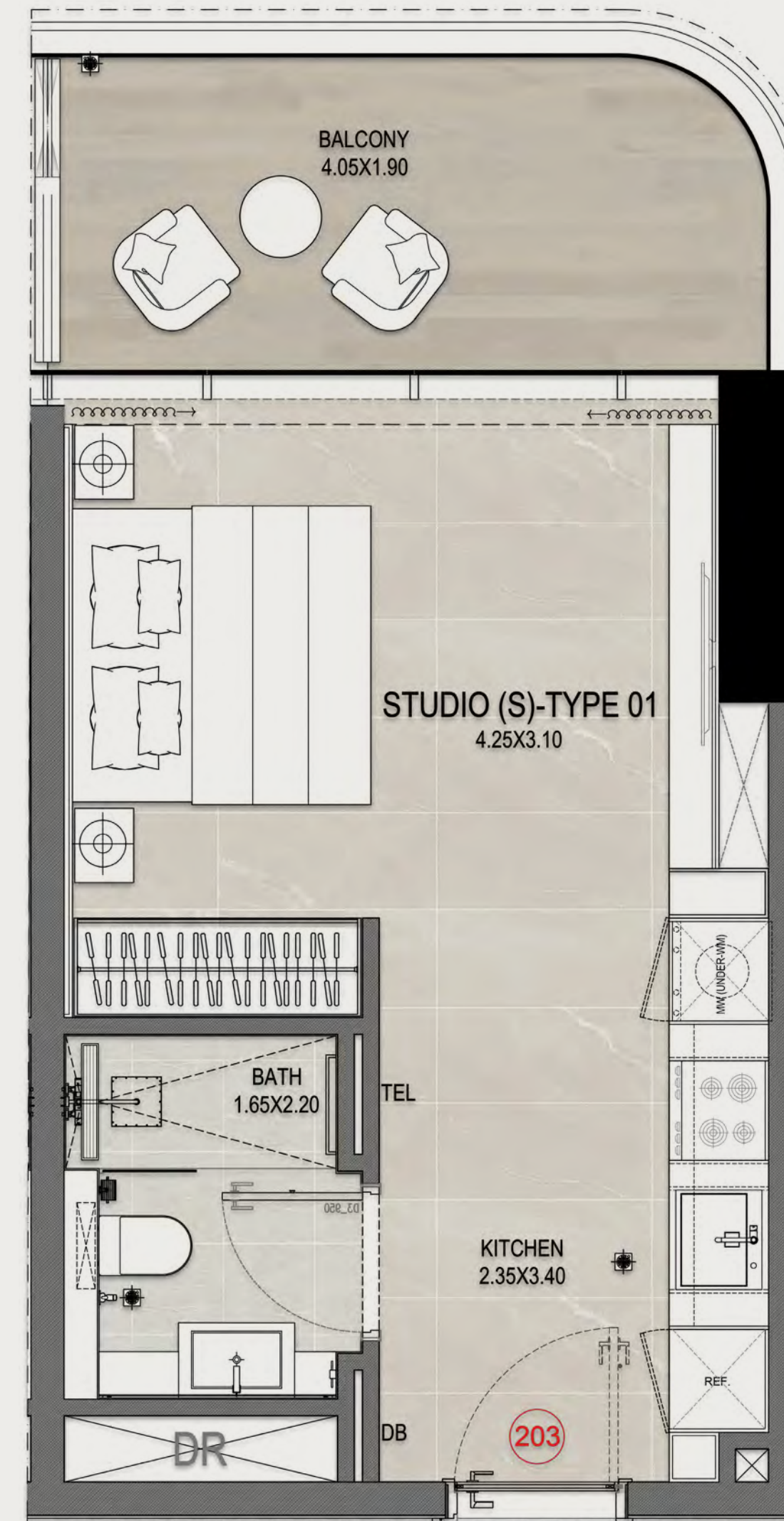
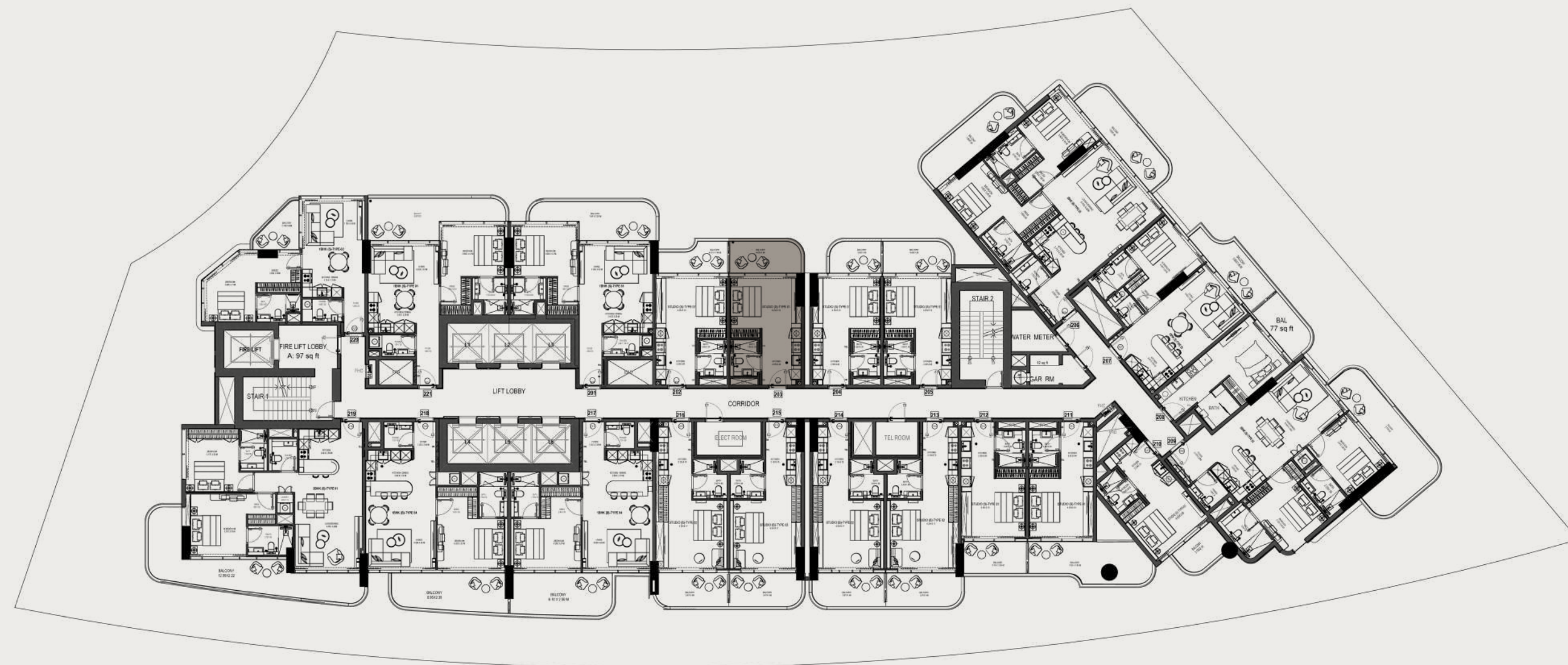




# Floor plans



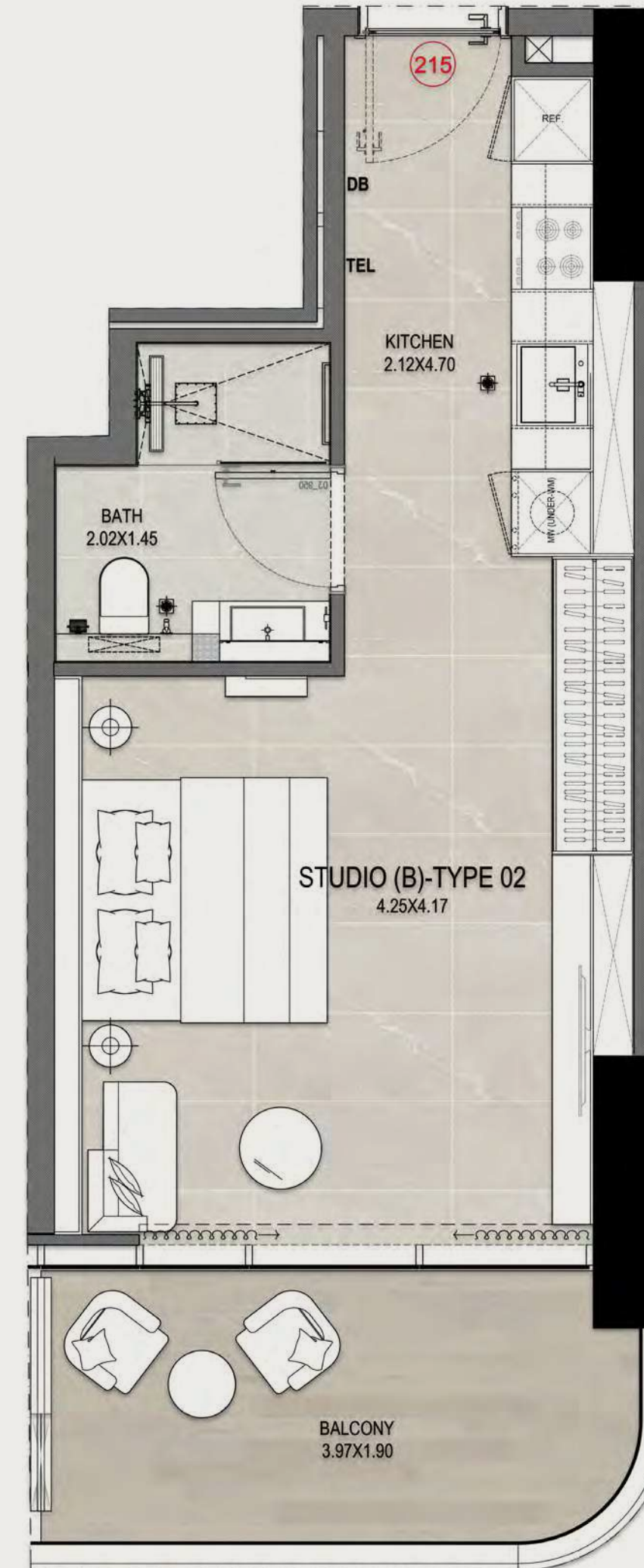
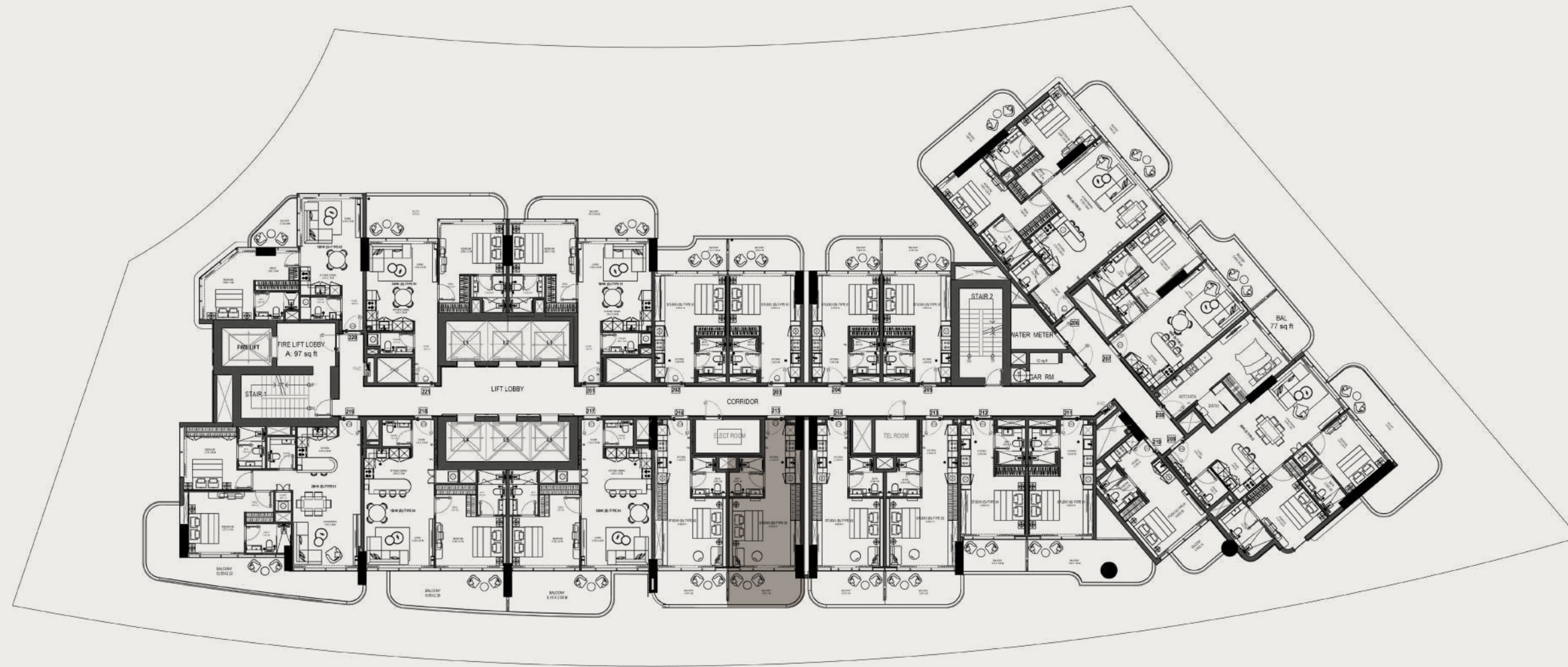
# STUDIO / TYPE 01



**Disclaimer:** 1. All room dimensions are measured to structural elements and exclude wall finishes and construction tolerances. 2. All dimensions have been provided by our consultant architects. 3. All materials, dimensions and drawings are approximate. Information is subject to change without notice. 4. Actual suite area may vary from the stated area. Drawings not to scale. The developer reserves the right to make revisions. 5. Calculation of suite area is measured as the area bounded by the centre line of demising or partition walls separating one unit from another unit, the exterior face of all exterior walls, and the exterior face of the corridor wall enclosing the adjoining unit. 6. Calculation of balcony area is measured as the area bounded by the centre line of demising or partition walls separating one unit from another unit, the outmost face of the enclosing guard and the external face of the adjoining balcony. 7. The units are measured at typical floor in the building. Columns may vary in size depending on the floor level. 8. For each unit type, unit sizes and details might be slightly different. Please refer to the sales and purchase agreement for the actual size of each specific unit.



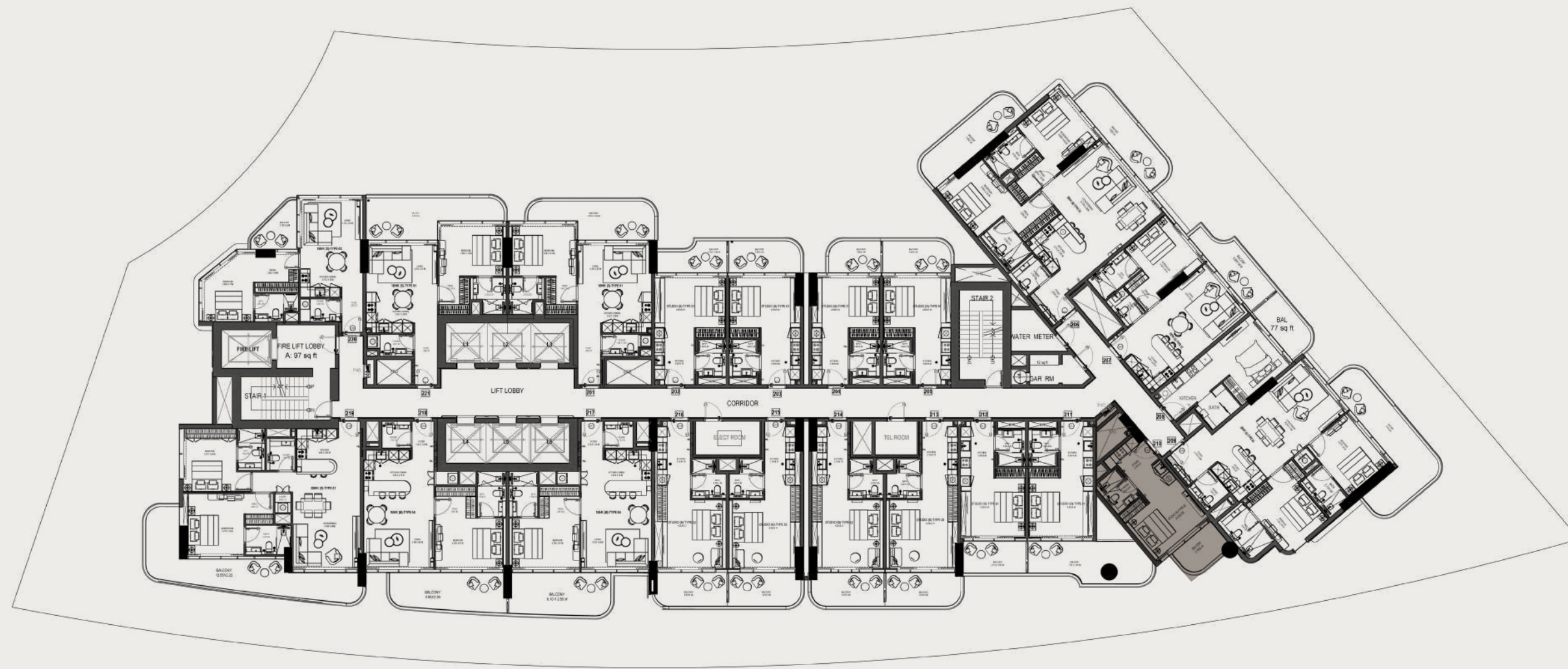
# STUDIO / TYPE 02



**Disclaimer:**1. All room dimensions are measured to structural elements and exclude wall finishes and construction tolerances. 2. All dimensions have been provided by our consultant architects. 3. All materials, dimensions and drawings are approximate. Information is subject to change without notice. 4. Actual suite area may vary from the stated area. Drawings not to scale. The developer reserves the right to make revisions. 5. Calculation of suite area is measured as the area bounded by the centre line of demising or partition walls separating one unit from another unit, the exterior face of all exterior walls, and the exterior face of the corridor wall enclosing the adjoining unit. 6. Calculation of balcony area is measured as the area bounded by the centre line of demising or partition walls separating one unit from another unit, the outmost face of the enclosing guard and the external face of the adjoining balcony. 7. The units are measured at typical floor in the building. Columns may vary in size depending on the floor level. 8. For each unit type, unit sizes and details might be slightly different. Please refer to the sales and purchase agreement for the actual size of each specific unit.



# STUDIO / TYPE 03



**Disclaimer:**1. All room dimensions are measured to structural elements and exclude wall finishes and construction tolerances. 2. All dimensions have been provided by our consultant architects. 3. All materials, dimensions and drawings are approximate. Information is subject to change without notice. 4. Actual suite area may vary from the stated area. Drawings not to scale. The developer reserves the right to make revisions. 5. Calculation of suite area is measured as the area bounded by the centre line of demising or partition walls separating one unit from another unit, the exterior face of all exterior walls, and the exterior face of the corridor wall enclosing the adjoining unit. 6. Calculation of balcony area is measured as the area bounded by the centre line of demising or partition walls separating one unit from another unit, the outmost face of the enclosing guard and the external face of the adjoining balcony. 7. The units are measured at typical floor in the building. Columns may vary in size depending on the floor level. 8. For each unit type, unit sizes and details might be slightly different. Please refer to the sales and purchase agreement for the actual size of each specific unit.

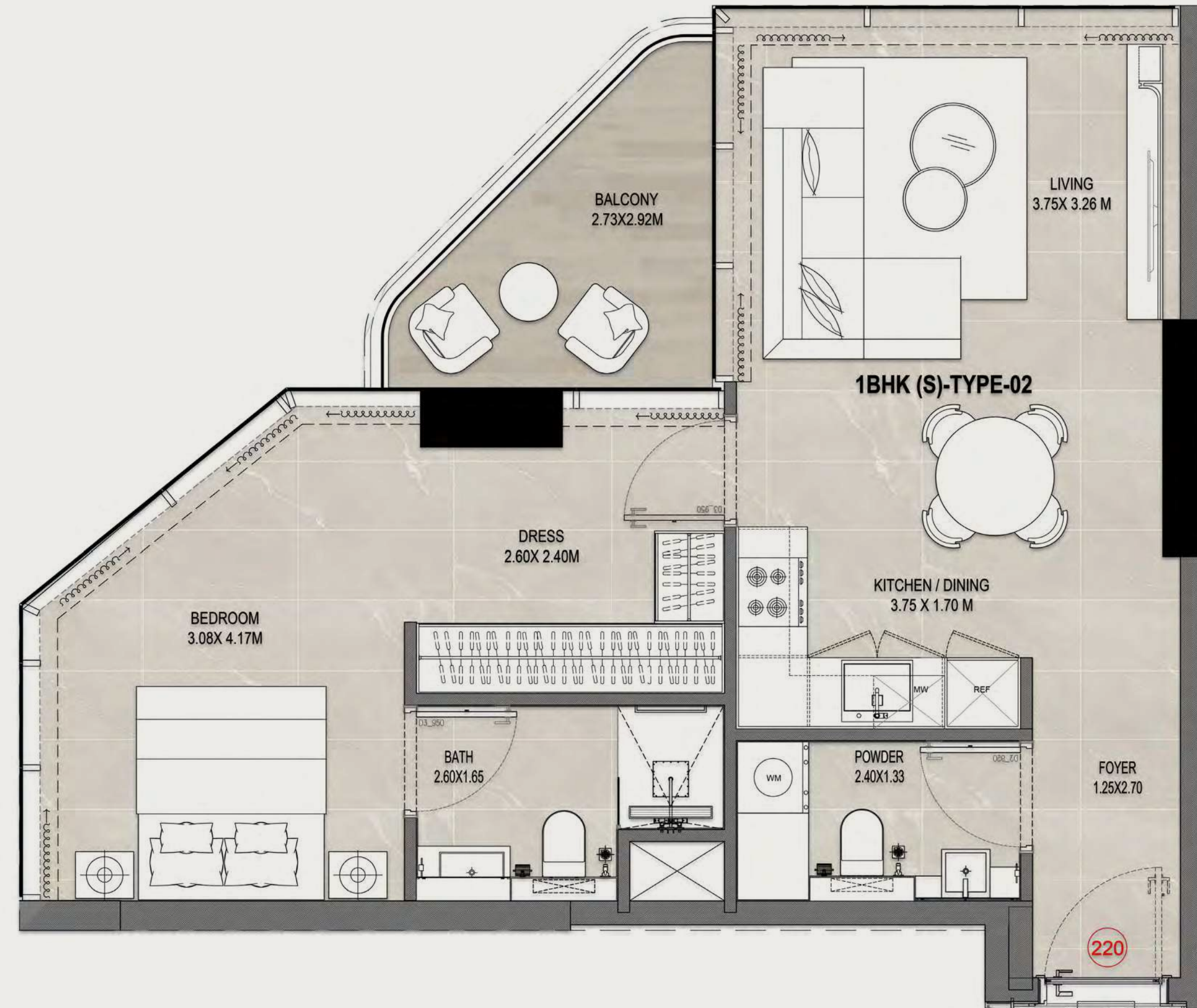
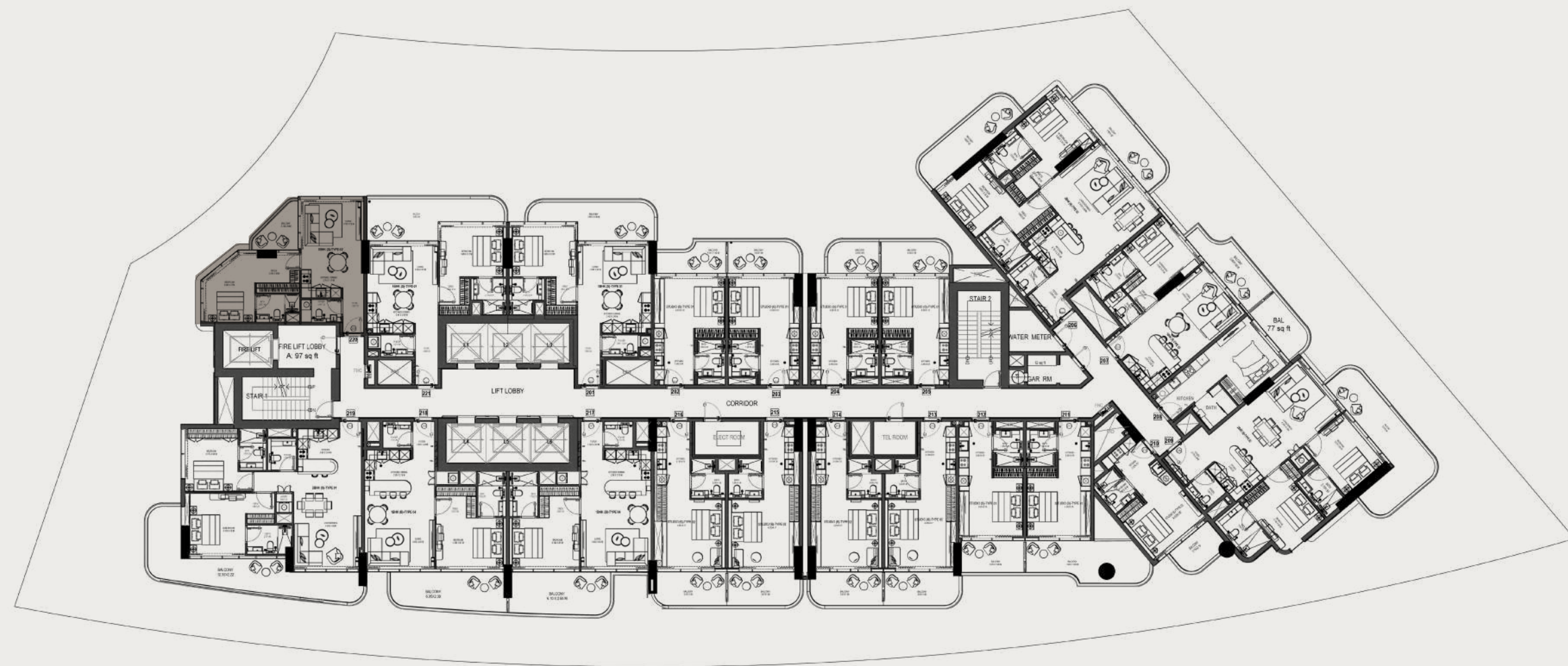




**Disclaimer:** 1. All room dimensions are measured to structural elements and exclude wall finishes and construction tolerances. 2. All dimensions have been provided by our consultant architects. 3. All materials, dimensions and drawings are approximate. Information is subject to change without notice. 4. Actual suite area may vary from the stated area. Drawings not to scale. The developer reserves the right to make revisions. 5. Calculation of suite area is measured as the area bounded by the centre line of demising or partition walls separating one unit from another unit, the exterior face of all exterior walls, and the exterior face of the corridor wall enclosing the adjoining unit. 6. Calculation of balcony area is measured as the area bounded by the centre line of demising or partition walls separating one unit from another unit, the outmost face of the enclosing guard and the external face of the adjoining balcony. 7. The units are measured at typical floor in the building. Columns may vary in size depending on the floor level. 8. For each unit type, unit sizes and details might be slightly different. Please refer to the sales and purchase agreement for the actual size of each specific unit.



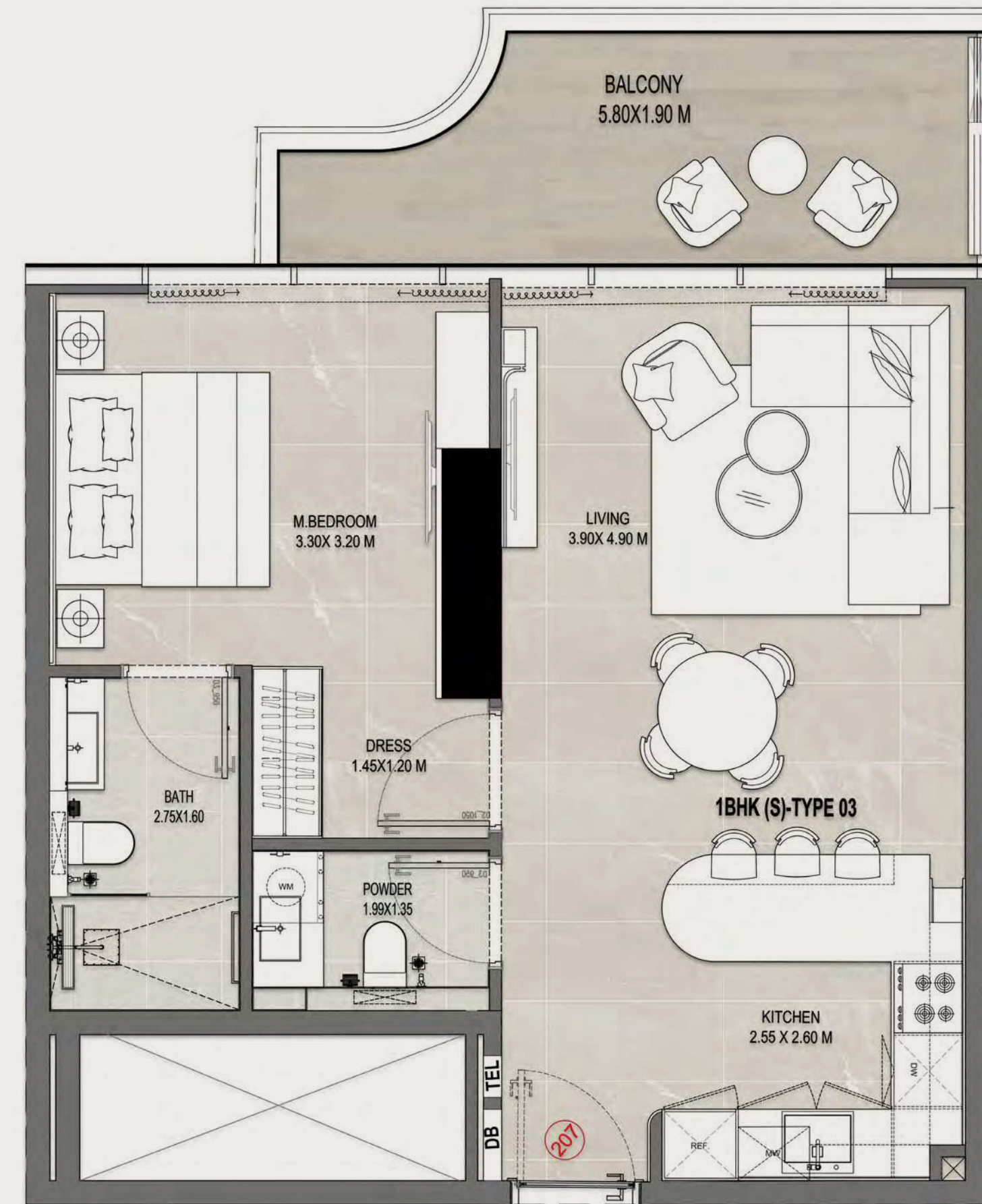
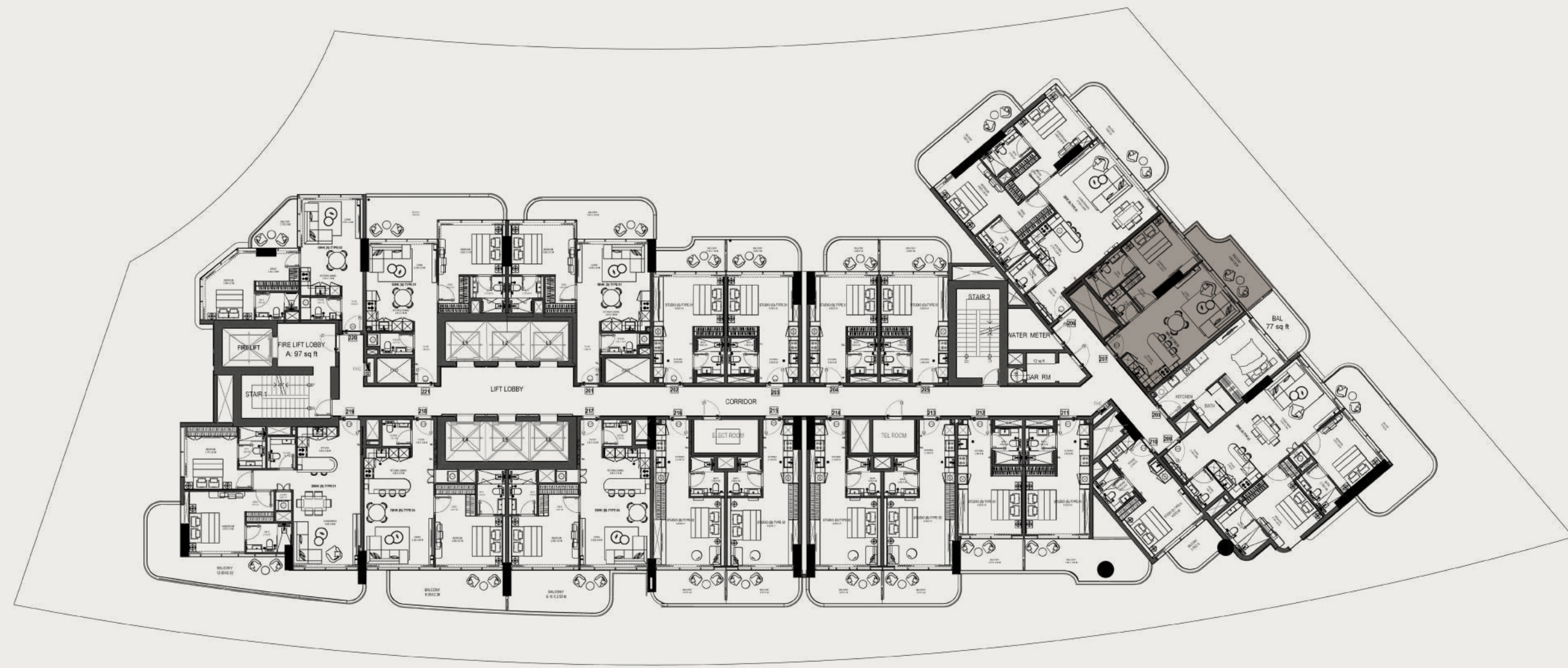
# 1 BHK / TYPE 2



**Disclaimer:**1. All room dimensions are measured to structural elements and exclude wall finishes and construction tolerances. 2. All dimensions have been provided by our consultant architects. 3. All materials, dimensions and drawings are approximate. Information is subject to change without notice. 4. Actual suite area may vary from the stated area. Drawings not to scale. The developer reserves the right to make revisions. 5. Calculation of suite area is measured as the area bounded by the centre line of demising or partition walls separating one unit from another unit, the exterior face of all exterior walls, and the exterior face of the corridor wall enclosing the adjoining unit. 6. Calculation of balcony area is measured as the area bounded by the centre line of demising or partition walls separating one unit from another unit, the outmost face of the enclosing guard and the external face of the adjoining balcony. 7. The units are measured at typical floor in the building. Columns may vary in size depending on the floor level. 8. For each unit type, unit sizes and details might be slightly different. Please refer to the sales and purchase agreement for the actual size of each specific unit.



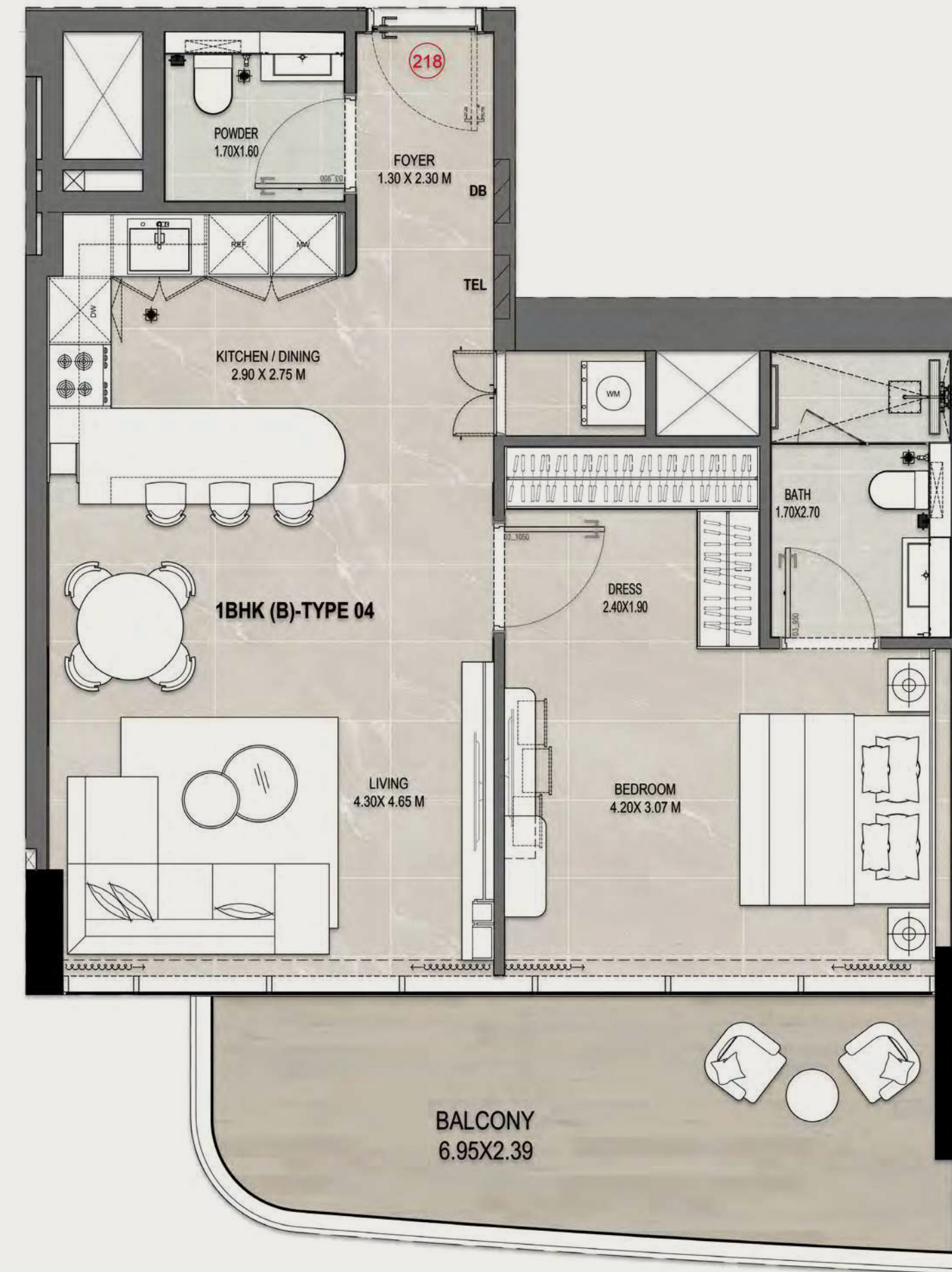
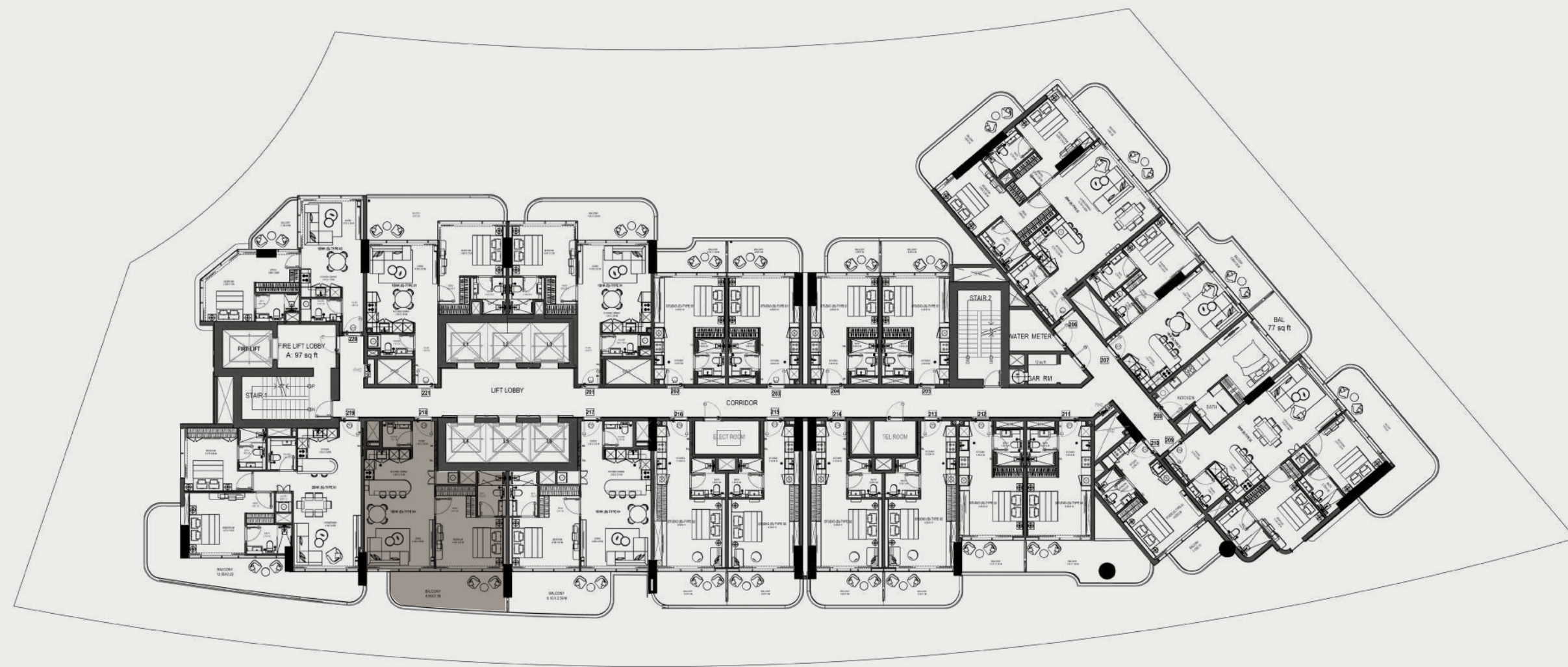
# 1 BHK / TYPE 3



**Disclaimer:**1. All room dimensions are measured to structural elements and exclude wall finishes and construction tolerances. 2. All dimensions have been provided by our consultant architects. 3. All materials, dimensions and drawings are approximate. Information is subject to change without notice. 4. Actual suite area may vary from the stated area. Drawings not to scale. The developer reserves the right to make revisions. 5. Calculation of suite area is measured as the area bounded by the centre line of demising or partition walls separating one unit from another unit, the exterior face of all exterior walls, and the exterior face of the corridor wall enclosing the adjoining unit. 6. Calculation of balcony area is measured as the area bounded by the centre line of demising or partition walls separating one unit from another unit, the outmost face of the enclosing guard and the external face of the adjoining balcony. 7. The units are measured at typical floor in the building. Columns may vary in size depending on the floor level. 8. For each unit type, unit sizes and details might be slightly different. Please refer to the sales and purchase agreement for the actual size of each specific unit.



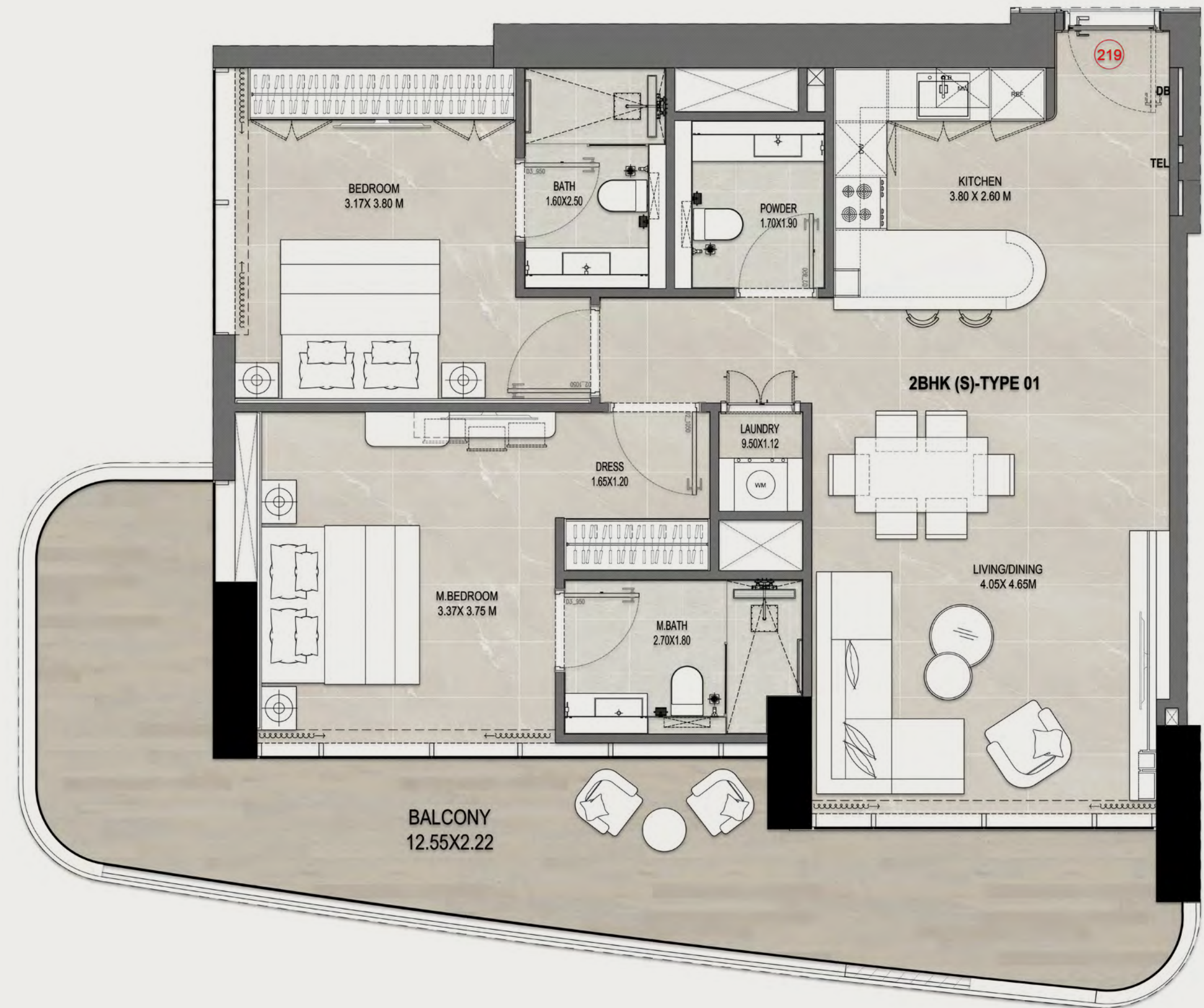
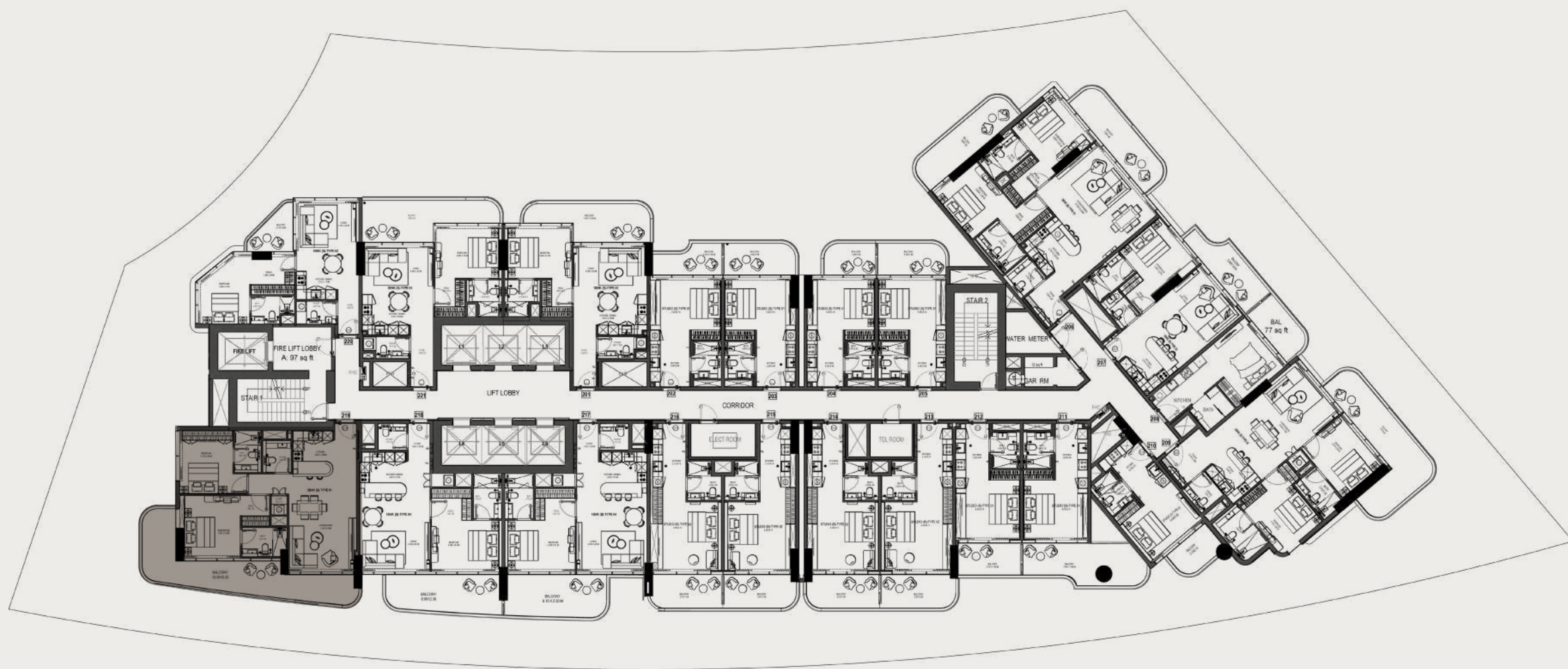
# 1 BHK / TYPE 4



**Disclaimer:**1. All room dimensions are measured to structural elements and exclude wall finishes and construction tolerances. 2. All dimensions have been provided by our consultant architects. 3. All materials, dimensions and drawings are approximate. Information is subject to change without notice. 4. Actual suite area may vary from the stated area. Drawings not to scale. The developer reserves the right to make revisions. 5. Calculation of suite area is measured as the area bounded by the centre line of demising or partition walls separating one unit from another unit, the exterior face of all exterior walls, and the exterior face of the corridor wall enclosing the adjoining unit. 6. Calculation of balcony area is measured as the area bounded by the centre line of demising or partition walls separating one unit from another unit, the outmost face of the enclosing guard and the external face of the adjoining balcony. 7. The units are measured at typical floor in the building. Columns may vary in size depending on the floor level. 8. For each unit type, unit sizes and details might be slightly different. Please refer to the sales and purchase agreement for the actual size of each specific unit.



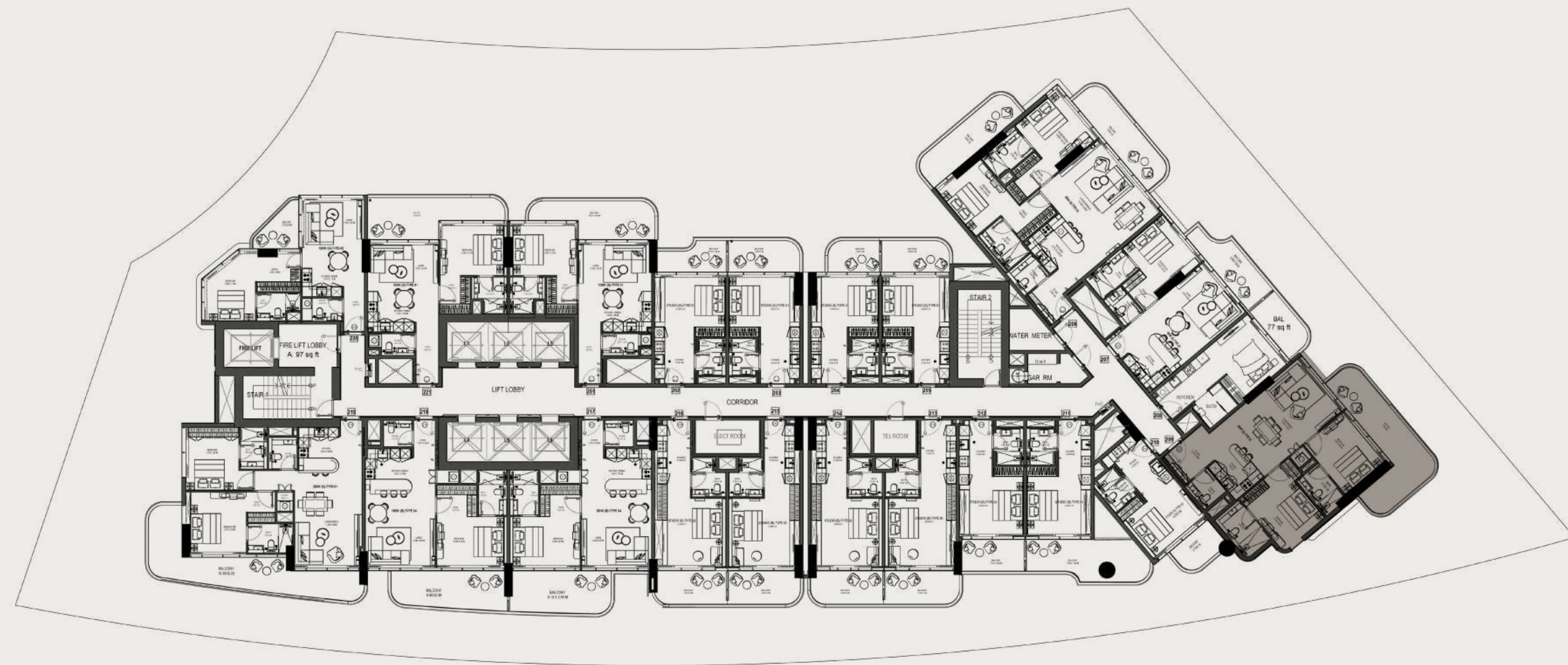
# 2 BHK / TYPE 1



**Disclaimer:**1. All room dimensions are measured to structural elements and exclude wall finishes and construction tolerances. 2. All dimensions have been provided by our consultant architects. 3. All materials, dimensions and drawings are approximate. Information is subject to change without notice. 4. Actual suite area may vary from the stated area. Drawings not to scale. The developer reserves the right to make revisions. 5. Calculation of suite area is measured as the area bounded by the centre line of demising or partition walls separating one unit from another unit, the exterior face of all exterior walls, and the exterior face of the corridor wall enclosing the adjoining unit. 6. Calculation of balcony area is measured as the area bounded by the centre line of demising or partition walls separating one unit from another unit, the outmost face of the enclosing guard and the external face of the adjoining balcony. 7. The units are measured at typical floor in the building. Columns may vary in size depending on the floor level. 8. For each unit type, unit sizes and details might be slightly different. Please refer to the sales and purchase agreement for the actual size of each specific unit.



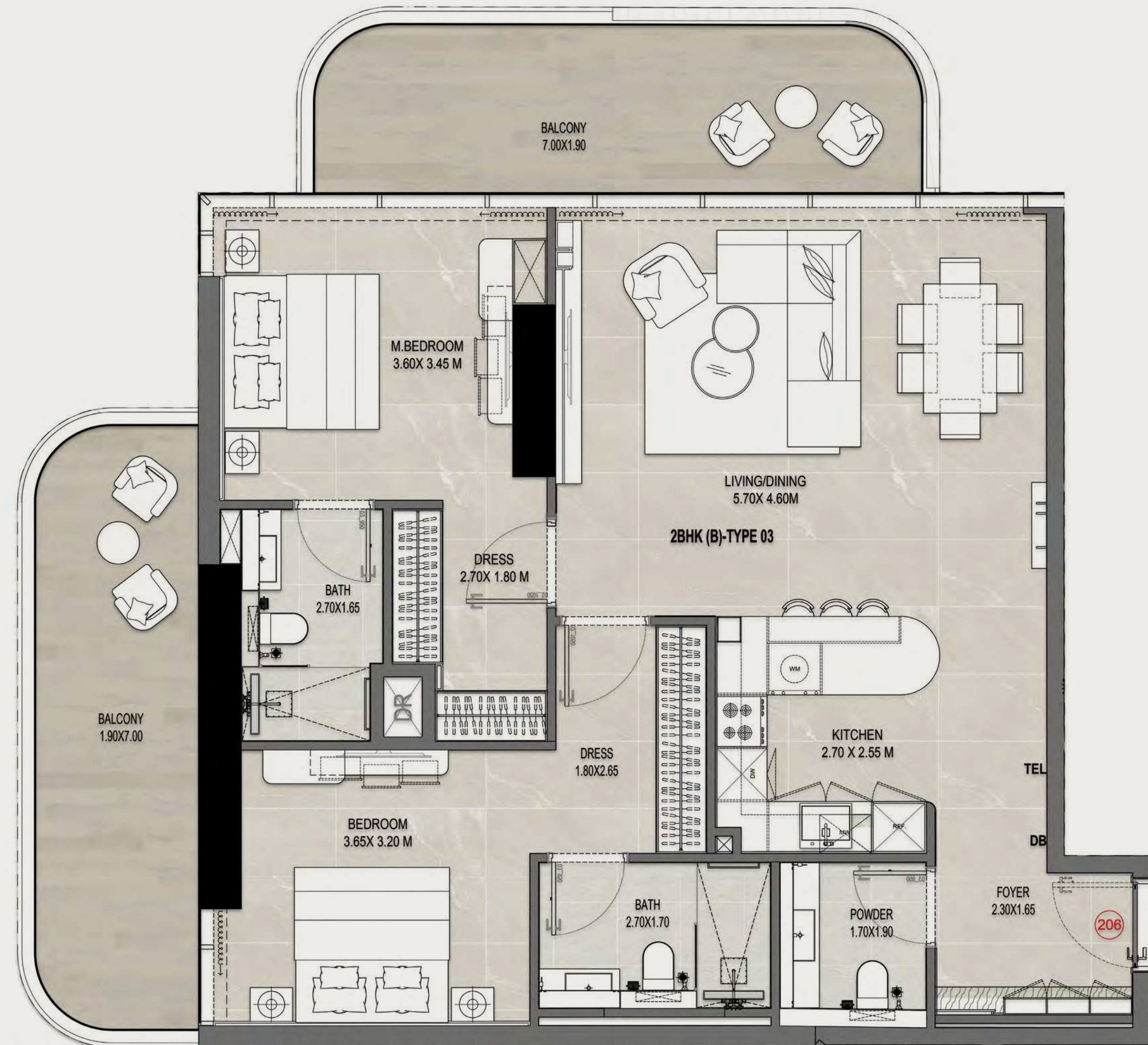
# 2 BHK / TYPE 2



**Disclaimer:** 1. All room dimensions are measured to structural elements and exclude wall finishes and construction tolerances. 2. All dimensions have been provided by our consultant architects. 3. All materials, dimensions and drawings are approximate. Information is subject to change without notice. 4. Actual suite area may vary from the stated area. Drawings not to scale. The developer reserves the right to make revisions. 5. Calculation of suite area is measured as the area bounded by the centre line of demising or partition walls separating one unit from another unit, the exterior face of all exterior walls, and the exterior face of the corridor wall enclosing the adjoining unit. 6. Calculation of balcony area is measured as the area bounded by the centre line of demising or partition walls separating one unit from another unit, the outmost face of the enclosing guard and the external face of the adjoining balcony. 7. The units are measured at typical floor in the building. Columns may vary in size depending on the floor level. 8. For each unit type, unit sizes and details might be slightly different. Please refer to the sales and purchase agreement for the actual size of each specific unit.



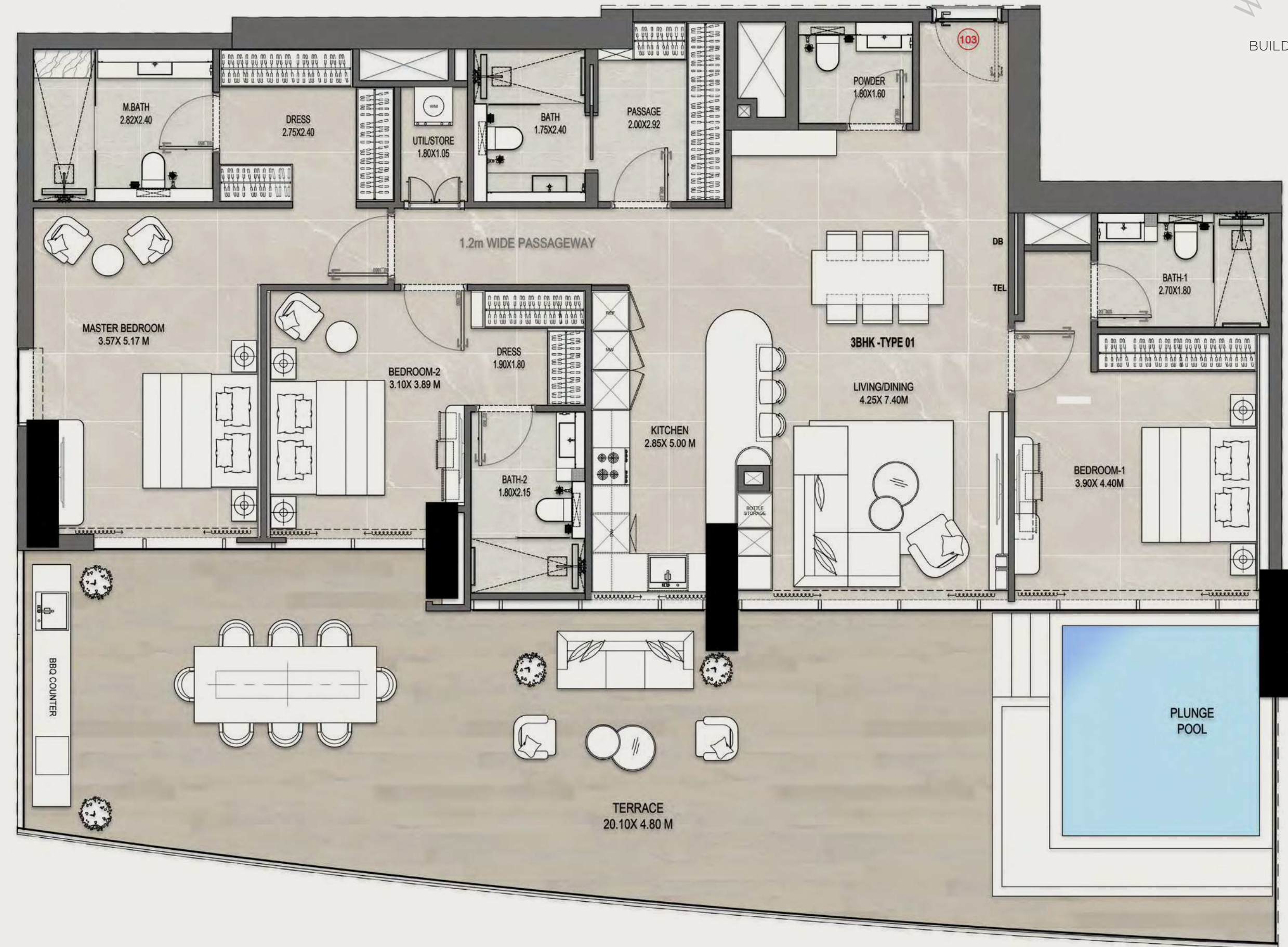
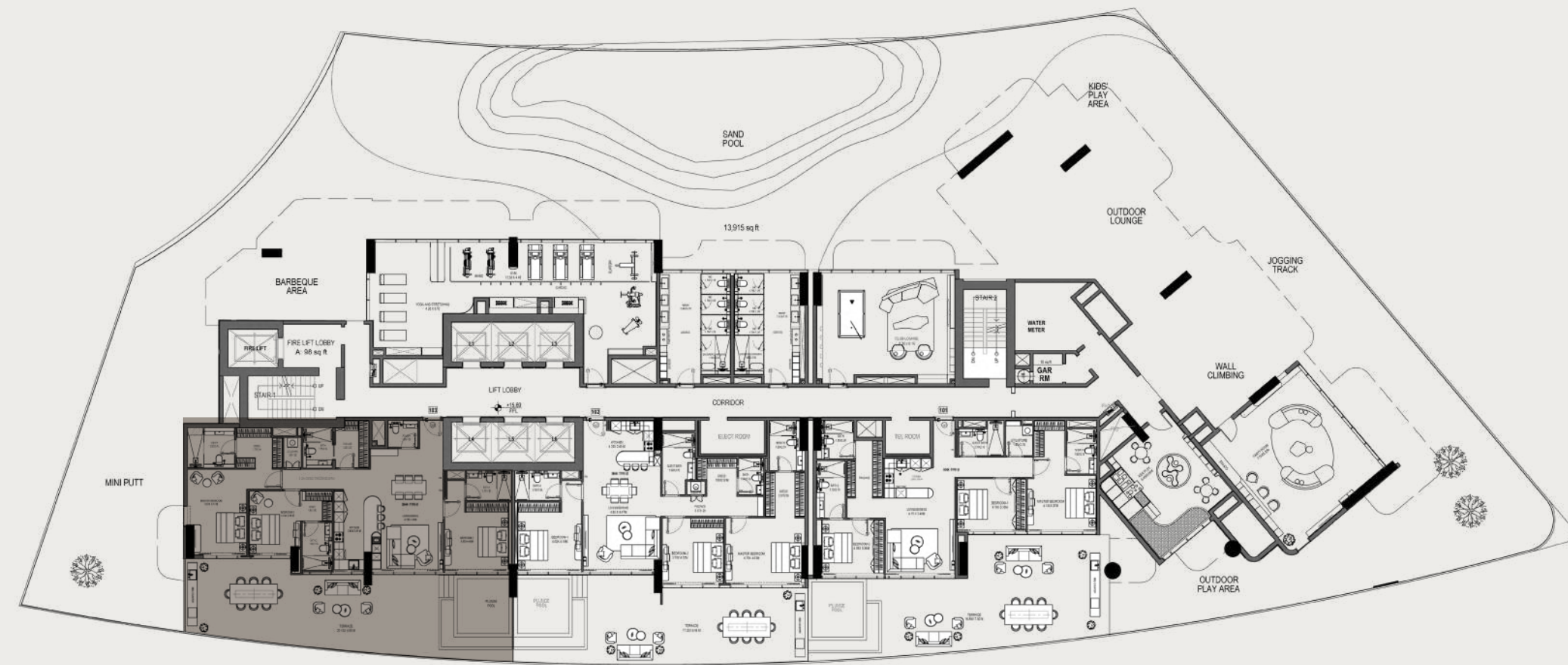
# 2 BHK / TYPE 3



**Disclaimer:**1. All room dimensions are measured to structural elements and exclude wall finishes and construction tolerances. 2. All dimensions have been provided by our consultant architects. 3. All materials, dimensions and drawings are approximate. Information is subject to change without notice. 4. Actual suite area may vary from the stated area. Drawings not to scale. The developer reserves the right to make revisions. 5. Calculation of suite area is measured as the area bounded by the centre line of demising or partition walls separating one unit from another unit, the exterior face of all exterior walls, and the exterior face of the corridor wall enclosing the adjoining unit. 6. Calculation of balcony area is measured as the area bounded by the centre line of demising or partition walls separating one unit from another unit, the outmost face of the enclosing guard and the external face of the adjoining balcony. 7. The units are measured at typical floor in the building. Columns may vary in size depending on the floor level. 8. For each unit type, unit sizes and details might be slightly different. Please refer to the sales and purchase agreement for the actual size of each specific unit.



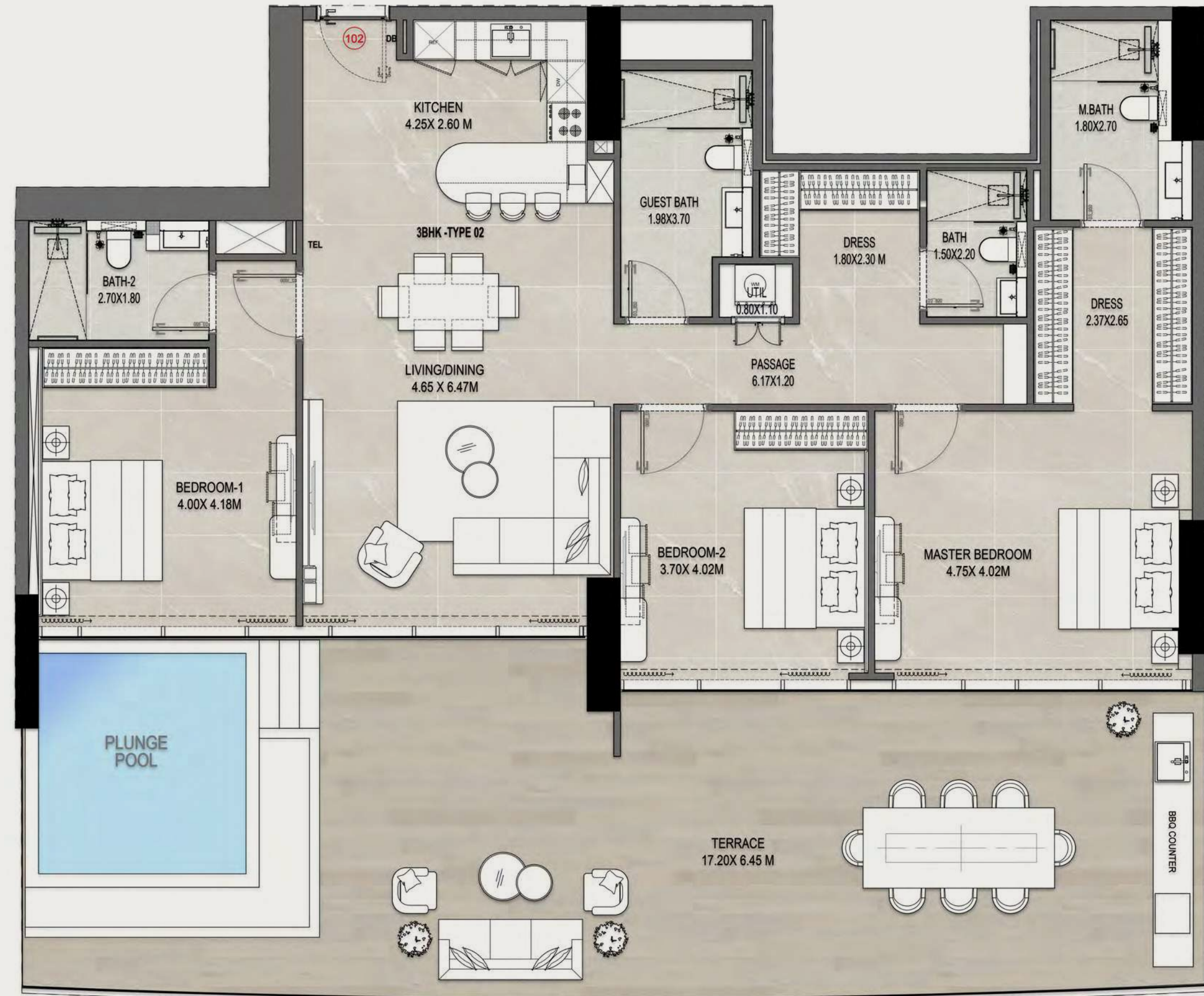
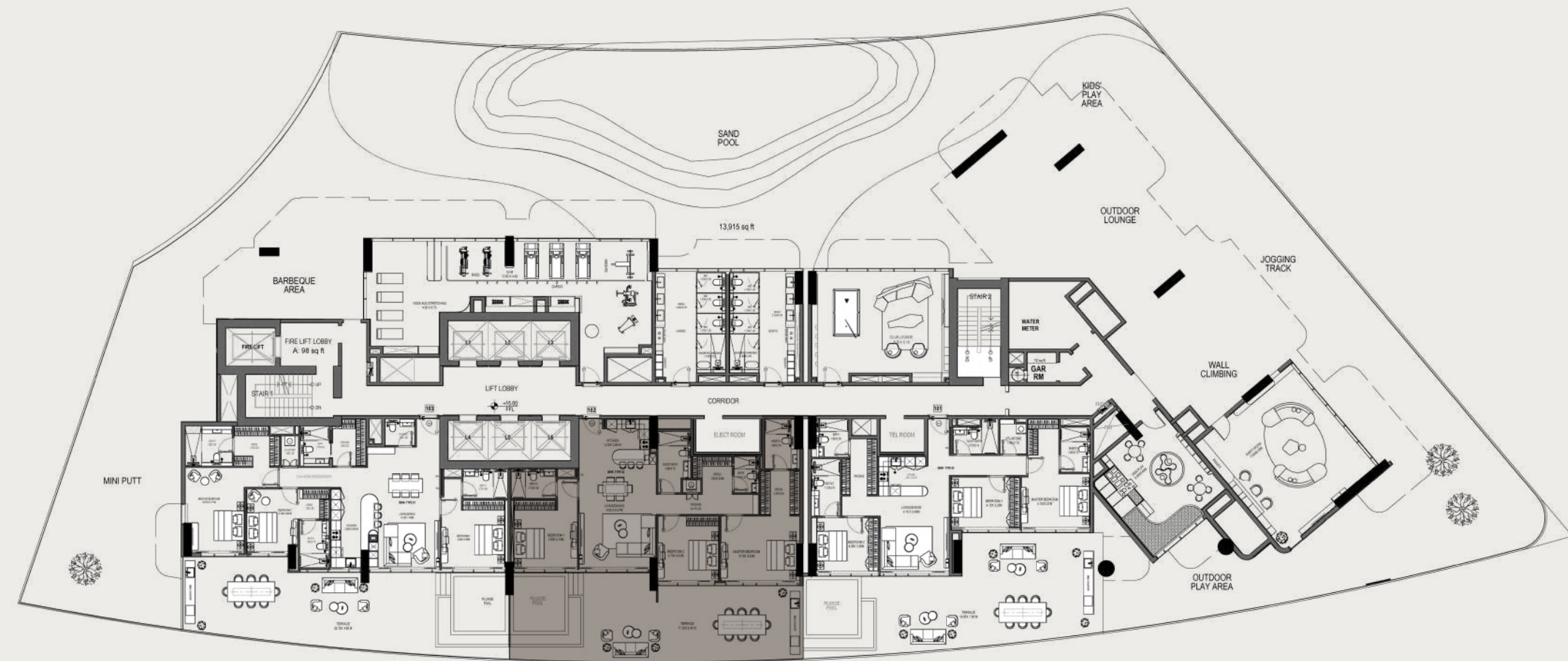
# 3 BHK / TYPE 1



**Disclaimer:** 1. All room dimensions are measured to structural elements and exclude wall finishes and construction tolerances. 2. All dimensions have been provided by our consultant architects. 3. All materials, dimensions and drawings are approximate. Information is subject to change without notice. 4. Actual suite area may vary from the stated area. Drawings not to scale. The developer reserves the right to make revisions. 5. Calculation of suite area is measured as the area bounded by the centre line of demising or partition walls separating one unit from another unit, the exterior face of all exterior walls, and the exterior face of the corridor wall enclosing the adjoining unit. 6. Calculation of balcony area is measured as the area bounded by the centre line of demising or partition walls separating one unit from another unit, the outmost face of the enclosing guard and the external face of the adjoining balcony. 7. The units are measured at typical floor in the building. Columns may vary in size depending on the floor level. 8. For each unit type, unit sizes and details might be slightly different. Please refer to the sales and purchase agreement for the actual size of each specific unit.



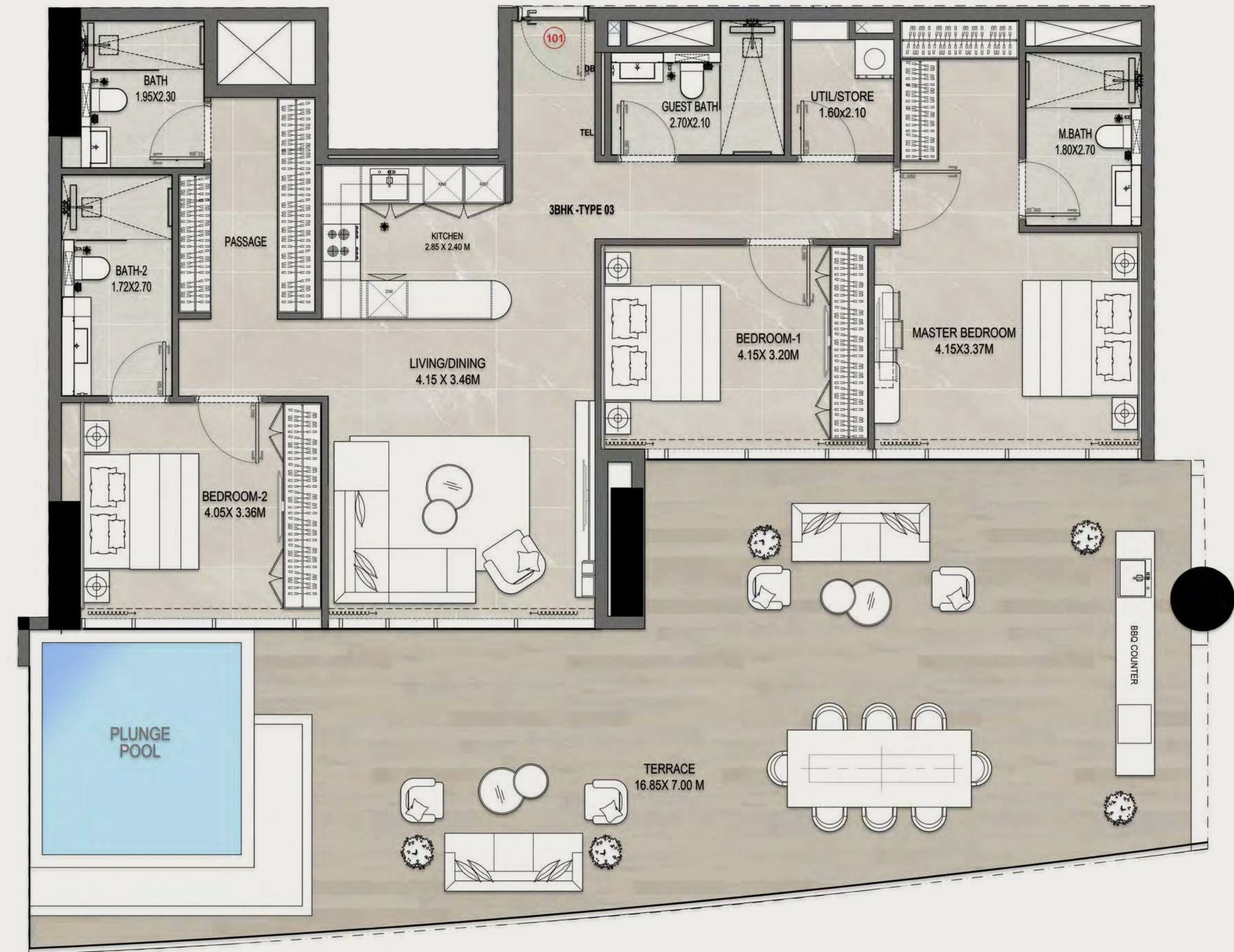
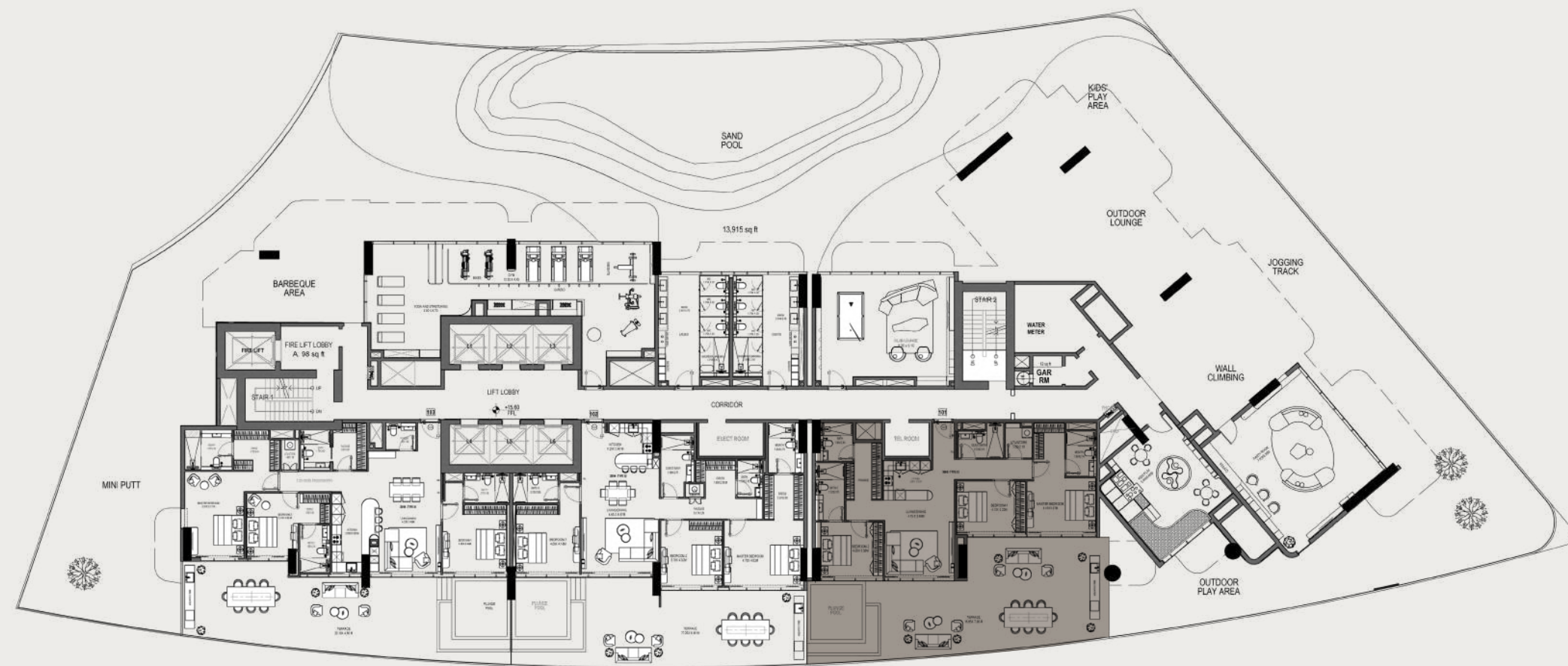
# 3 BHK / TYPE 2



**Disclaimer:**1. All room dimensions are measured to structural elements and exclude wall finishes and construction tolerances. 2. All dimensions have been provided by our consultant architects. 3. All materials, dimensions and drawings are approximate. Information is subject to change without notice. 4. Actual suite area may vary from the stated area. Drawings not to scale. The developer reserves the right to make revisions. 5. Calculation of suite area is measured as the area bounded by the centre line of demising or partition walls separating one unit from another unit, the exterior face of all exterior walls, and the exterior face of the corridor wall enclosing the adjoining unit. 6. Calculation of balcony area is measured as the area bounded by the centre line of demising or partition walls separating one unit from another unit, the outmost face of the enclosing guard and the external face of the adjoining balcony. 7. The units are measured at typical floor in the building. Columns may vary in size depending on the floor level. 8. For each unit type, unit sizes and details might be slightly different. Please refer to the sales and purchase agreement for the actual size of each specific unit.



# 3 BHK / TYPE 3



**Disclaimer:** 1. All room dimensions are measured to structural elements and exclude wall finishes and construction tolerances. 2. All dimensions have been provided by our consultant architects. 3. All materials, dimensions and drawings are approximate. Information is subject to change without notice. 4. Actual suite area may vary from the stated area. Drawings not to scale. The developer reserves the right to make revisions. 5. Calculation of suite area is measured as the area bounded by the centre line of demising or partition walls separating one unit from another unit, the exterior face of all exterior walls, and the exterior face of the corridor wall enclosing the adjoining unit. 6. Calculation of balcony area is measured as the area bounded by the centre line of demising or partition walls separating one unit from another unit, the outmost face of the enclosing guard and the external face of the adjoining balcony. 7. The units are measured at typical floor in the building. Columns may vary in size depending on the floor level. 8. For each unit type, unit sizes and details might be slightly different. Please refer to the sales and purchase agreement for the actual size of each specific unit.



Studio



RABDAN  
GATES



Studio





1 Bedroom





1 Bedroom





2 Bedroom





2 Bedroom





3 Bedroom





3 Bedroom





3 Bedroom





## PAYMENT PLAN

20 %

DOWN PAYMENT

40 %

DURING  
CONSTRUCTION

10 %

HANDOVER

30 %

POST HANDOVER

COMPLETION DATE : Q2 - 2028



# SIZE RANGE

TYPES	NO. OF UNITS	SIZE RANGE (SQ.FT)
Studio	248	366 - 487
1 Bedroom	125	708 - 929
2 Bedroom	61	1,115 - 1,350
3 Bedroom	3	2,503 - 2,725



