

Meriden

B E A C H R E S I D E N C E S

Timeless Island Living

DEVELOPED BY

GREEN
HORIZON
DEVELOPMENTS

A woman with short, wavy hair is shown in profile, looking out towards the right. She is wearing a light-colored top with a floral pattern. The background is a bright, hazy sky with many birds in flight, creating a sense of movement and freedom. The lighting is warm and golden, suggesting a sunset or sunrise. The overall mood is serene and contemplative.

*Masoned by exquisite quality,
mirrored by the sea.*



*Wake up to calm coastal breezes
& waves lapping on the shore.*



MERIDEN BEACH RESIDENCES

*Where island tranquility
meets modern artistry*



At Meriden Beach Residences, the calm of the sea harmonises with timeless design to create a coastal retreat shaped by luminous spaces, bespoke materials and timeless craftsmanship.

Where the whisper of the waves meets architectural ambition, Meriden Beach Residences emerges as a sculptural ode to its beautiful island setting.

The design takes its cues from the sea with soft, fluid lines which recall the curves of breaking waves, while large expanses of glass frame the horizon and let natural light ripple through the interiors.

With modern, Mediterranean inspired architecture synonymous with the timeless rhythms of the shore, every form and finish is an intentional conversation between nature and design.

This is where European refinement meets the soul of the islands.





MERIDEN BEACH RESIDENCES

Mediterranean inspired architecture

Meriden Beach Residences has been designed and created to provide the ultimate in timeless coastal living.

The most striking architectural feature is the incorporation of elegant curved lines and flowing cantilevered balconies that create a dynamic and fluid façade. This special feature provides residents with wide, panoramic views of the coast and the surrounding landscape.

Expansive floor-to-ceiling glass windows and doors create a seamless flow between indoor and outdoor living spaces which embrace an abundance of natural light and a sense of openness.

BRAND PHILOSOPHY

*The art of living,
inspired by the sea.*

*Beyond architecture, is an expression
of timelessness, built to age
gracefully, to hold sunlight in its
embrace and peace within its heart.*





PROJECT OVERVIEW

Designed for timeless island living

Meriden Beach Residences is a boutique, low-rise residential community on the highly sought after Dubai Islands, one of the city's prime investment hotspots and upcoming lifestyle destinations.

Home to 63 premium quality apartments with bespoke custom-made European finishes and branded appliances.

Located close to the beach and the island waterfront, this iconic development will be the perfect place to call home.

Homeowners and residents will benefit from superior private lifestyle amenities and enjoy wonderful panoramic views.

DUBAI ISLANDS

Your Island Sanctuary

Meriden Beach Residences is perfectly placed on Island A of Dubai Islands, within close proximity to the ocean.

Offering the best of both worlds, Dubai Islands is home to 20km of luminous coastline and will bring together the best in leisure and hospitality.

Part of the Dubai 2040 Urban Master Plan and developed by Nakheel, Dubai Islands will be the city's premier waterfront destination home to luxury residences, hotels and resorts, retail, parks, golf courses and cultural hubs.

Only minutes from the mainland, linked by the iconic Infinity Bridge, Dubai Islands offers a serene island address with excellent connectivity to the heritage and culture of "Old Dubai" and the vibrant heart of "New Dubai".





DUBAI ISLANDS

Where the city touches the tide

A vision shaped by the sea and the future, Dubai Islands reimagines what it means to live by the water.

Comprising five distinctive isles, Central, Marina, Shore, Golf and Elite, this master-planned archipelago brings together resorts, residences and cultural landmarks in one extraordinary coastal canvas.

Designed in line with Dubai's 2040 Urban Vision, the islands are more than a destination, they are a declaration of how the city will live, move and breathe in the years to come.

*Effortless connections.
Endless possibilities.*

<i>Infinity Bridge</i>	<i>3 min</i>
<i>Hyatt Regency</i>	<i>3 min</i>
<i>Nearest Metro Station</i>	<i>6 min</i>
<i>Gold Souk</i>	<i>6 min</i>
<i>Dubai Hospital</i>	<i>6 min</i>
<i>Al Mamzar Beach</i>	<i>6 min</i>
<i>Deira City Centre</i>	<i>6 min</i>
<i>Canadian Specialist Hospital</i>	<i>8 min</i>
<i>Dubai International Airport</i>	<i>10 min</i>
<i>The Elite English School</i>	<i>10 min</i>
<i>Al Ghurair Centre</i>	<i>10 min</i>
<i>Cruise Terminal</i>	<i>13 min</i>
<i>La Mer Beach</i>	<i>13 min</i>
<i>Jumeirah Mosque</i>	<i>18 min</i>
<i>Jumeirah Public Beach</i>	<i>18 min</i>
<i>Dubai Frame</i>	<i>18 min</i>
<i>Downtown Dubai</i>	<i>22 min</i>
<i>Dubai Mall</i>	<i>22 min</i>







DESIGN ELEMENTS

*European in spirit,
coastal in soul*

*Textures inspired by stone and sand,
paired with neutral tones from the
sand and sea.*

*A palette of subtle elegance that lets
nature be the true designer.*



INTERIORS

*Spaces designed
for the way you feel*

*Walls clad in textured wallpaper,
floors laid with Italian porcelain
and bespoke joinery that frames
every moment with grace.*



Meriden
BEACH RESIDENCES

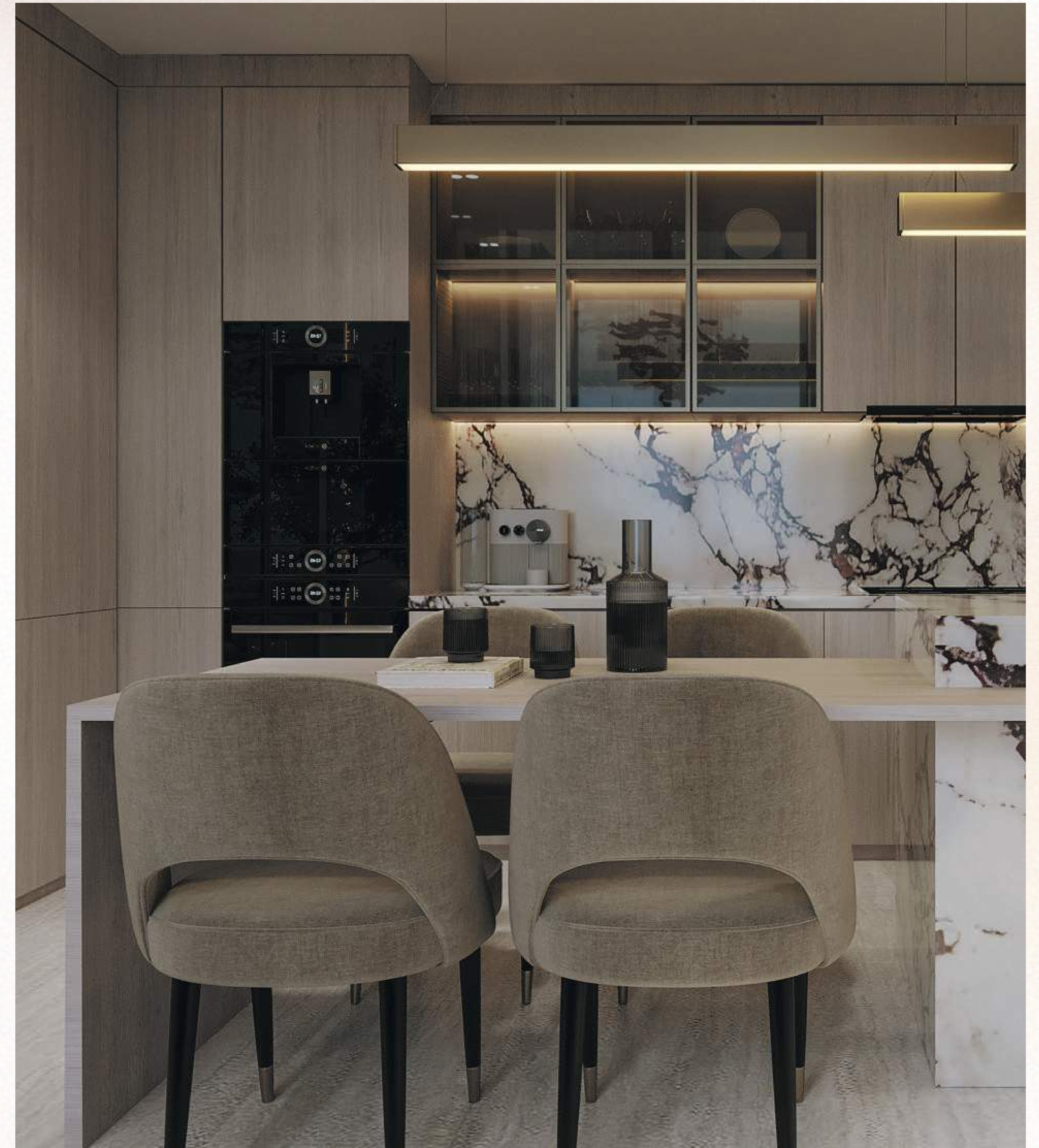
FRANK LLOYD WRIGHT
BRUCE COOPER
WOODCOCK

KITCHENS

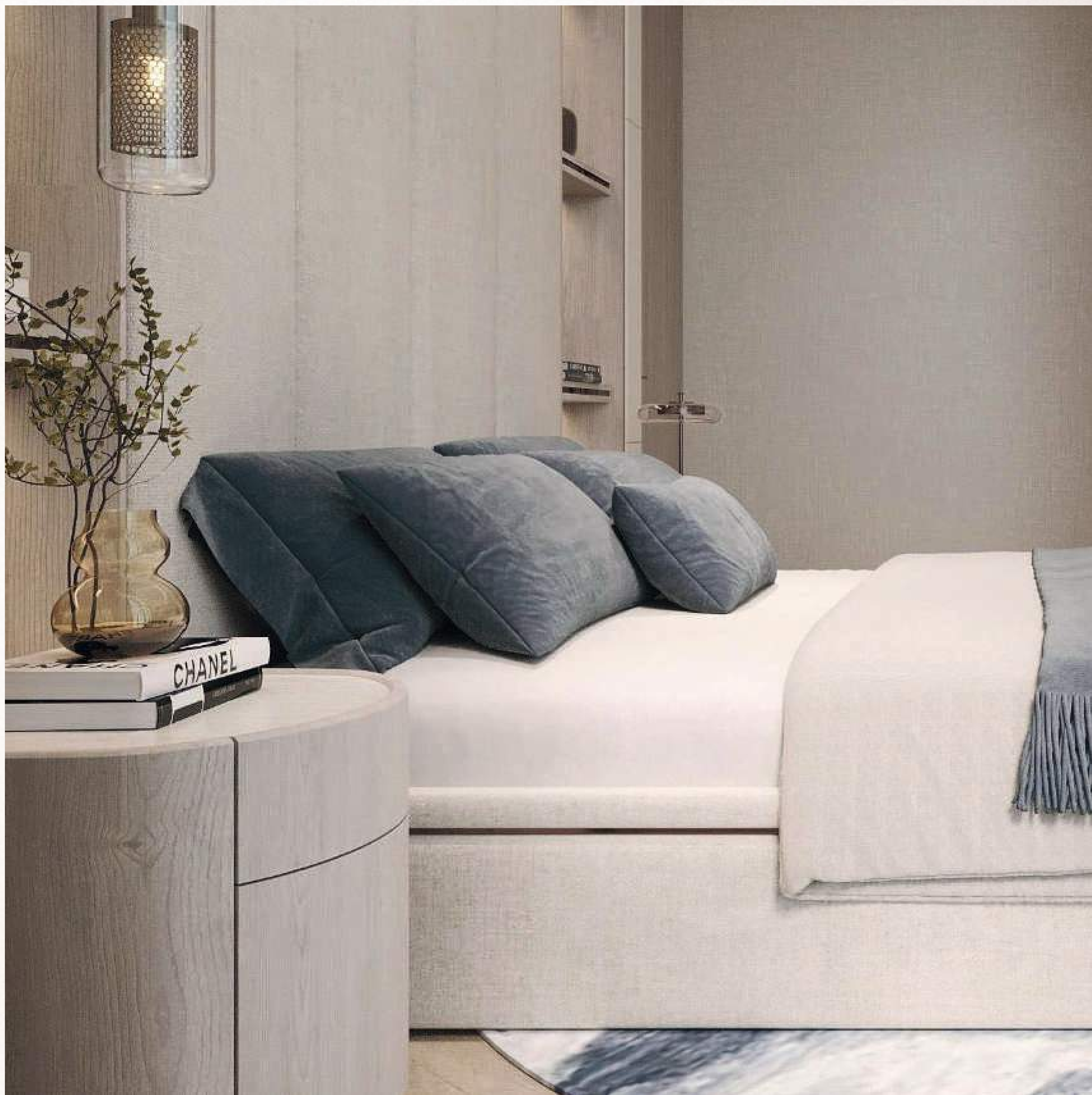
*Precision
in every detail*

*Italian quartz islands anchor the
heart of every home.*

*Cabinetry designed for flow.
Appliances by Miele and Bosch
with craftsmanship that speaks
quietly of quality.*







BEDROOMS

*Spaces that
breathe serenity*

*Natural palettes. Built-in wardrobes.
Soft drapery that frame the morning
light. Comfort shaped for rest, calm
and reflection.*

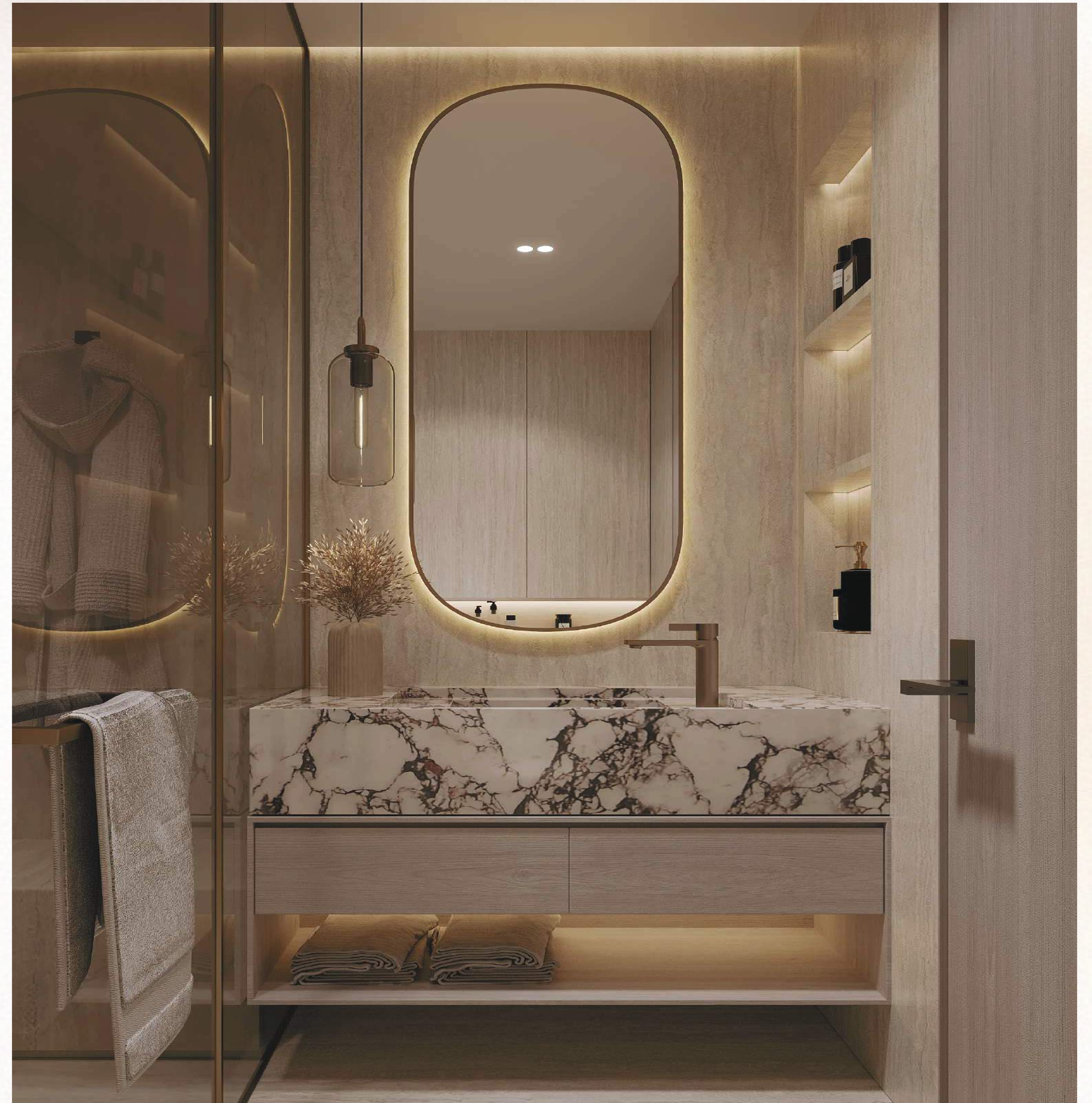


BATHROOMS

*Rituals of
refinement*

*Rose-gold fixtures. Italian
quartz feature walls. Ambient
lighting that softens the day's
edges.*

*Every surface shaped as a
dialogue between craft and
calm.*





AMENITIES

A modern wellness & lifestyle sanctuary

Residents will enjoy a plethora of indoor and outdoor lifestyle amenities including fitness, wellness and recreation across three different levels, including a beautiful rooftop area with panoramic coastal views.







Level One

- *Adult & children's swimming pools*
- *An indoor & outdoor gymnasiums*
- *A yoga & meditation terrace*
- *Steam & sauna rooms*
- *A children's play zone*
- *Cabanas & sunbeds*







Podium Two

- Cabanas & seating pods
- Mini golf & billiards
- A table tennis lounge
- A children's activity zone







Rooftop

- *An infinity pool & children's pool*
- *A jacuzzi deck*
- *A bbq and alfresco lounge*
- *Outdoor seating & cabanas*



A man and a woman are riding bicycles along a paved path that runs parallel to a beach. The sun is low on the horizon, creating a warm, golden glow over the ocean and the scene. The man is on the left, wearing a white t-shirt and shorts, and the woman is on the right, wearing a white long-sleeved shirt and shorts. They are both smiling and looking towards the right. The path is made of light-colored bricks or stones. To the left of the path is a rocky shoreline with some low-lying vegetation. To the right is a row of palm trees and a modern building in the background. The overall atmosphere is peaceful and romantic.

COMMUNITY LIFESTYLE

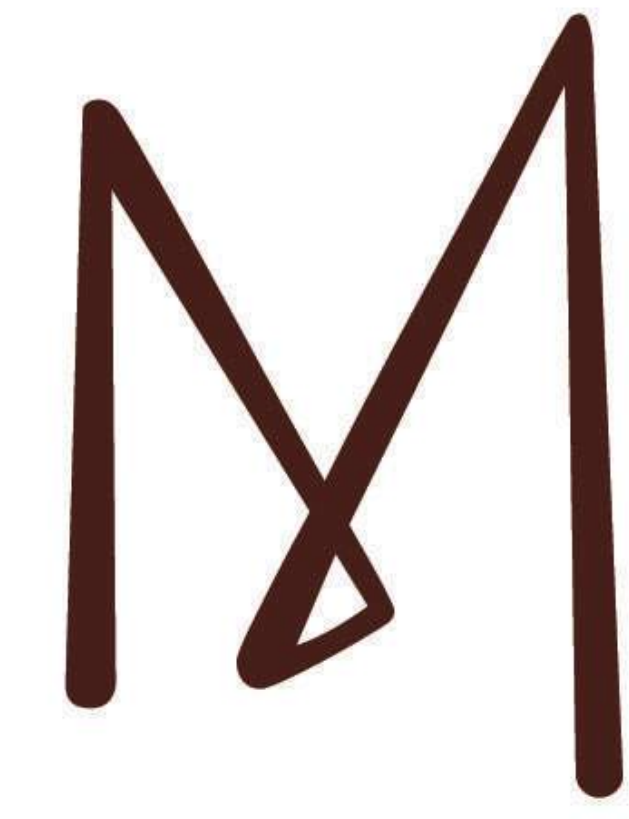
Life, composed like the coastline

*Whether it's a sunrise swim or a starlit dinner,
Meriden Beach Residences transforms ordinary
moments into island rituals. A place where time
slows and life finds its rhythm.*

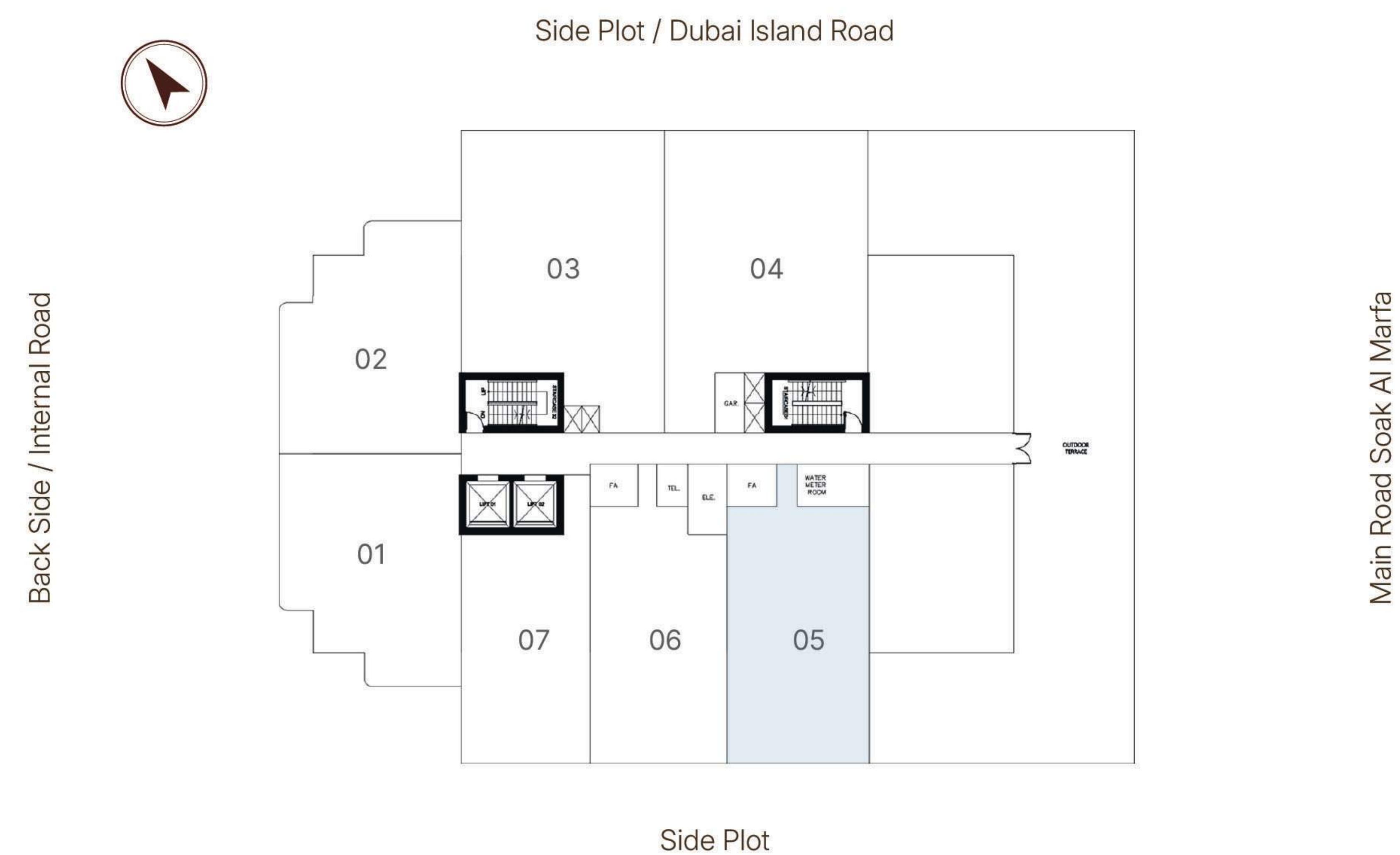
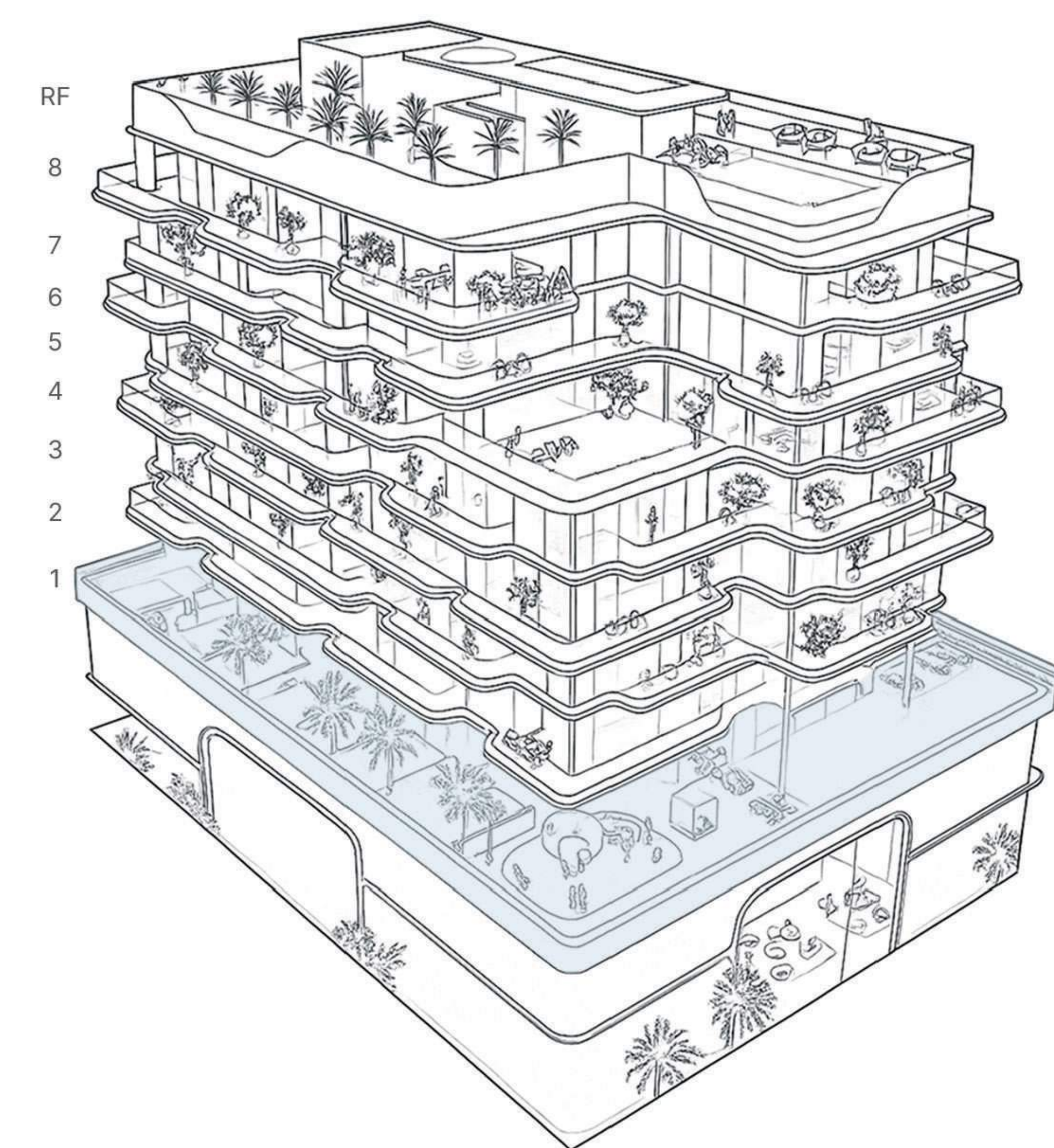


Floor Plans





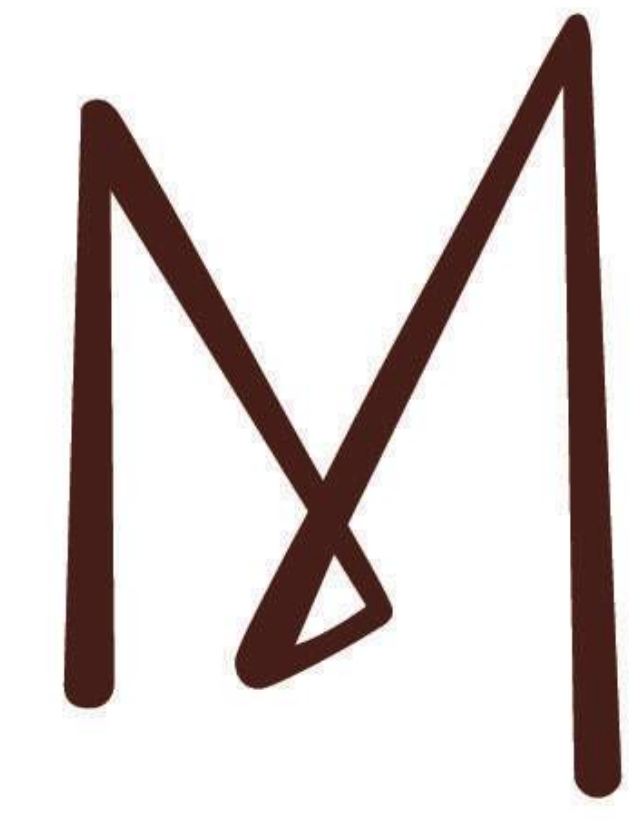
1 Bedroom Apartment Type A



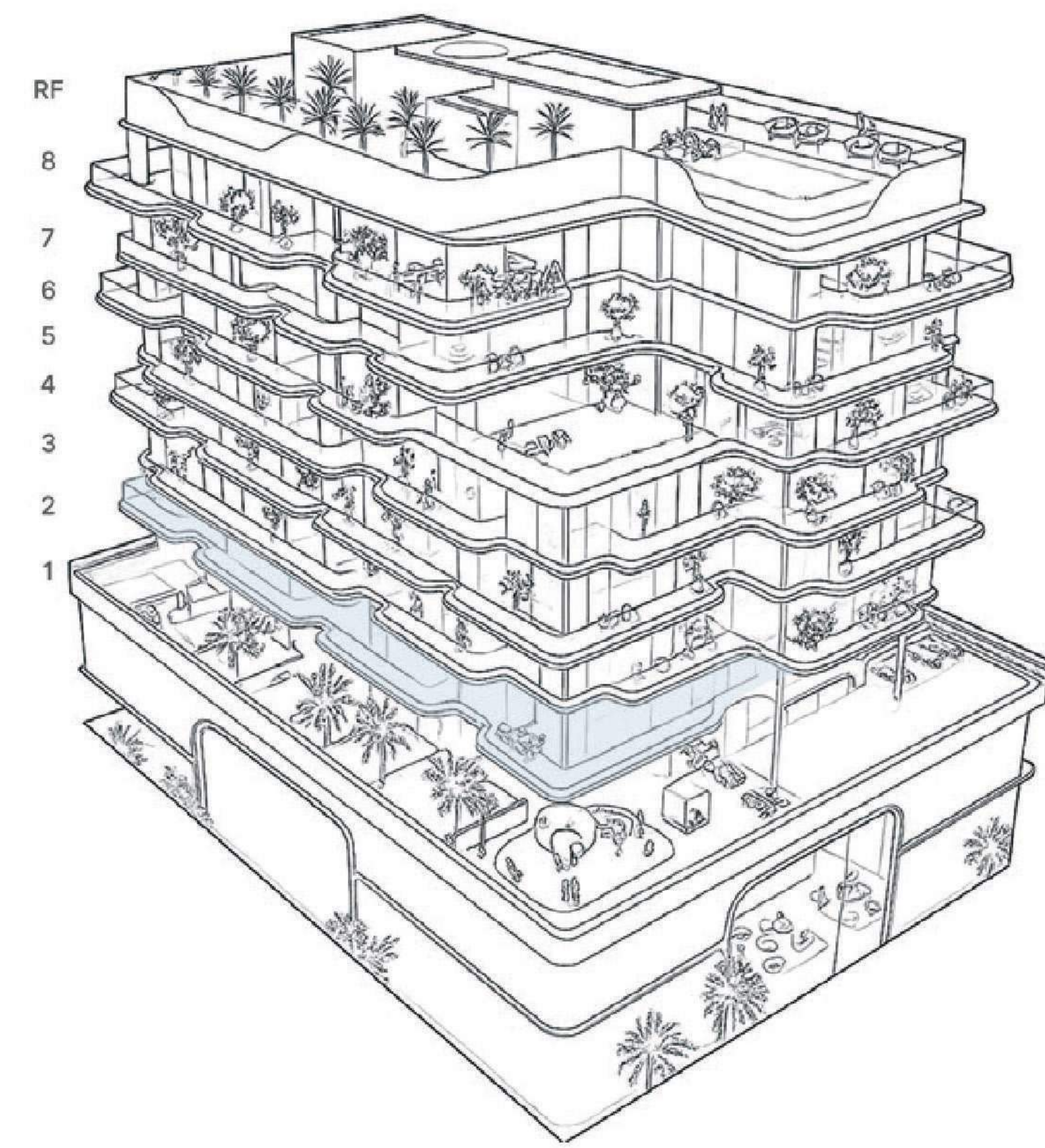
Unit No	05	Floor No	1
Suite Area	775 Sq.ft		72 Sq.m
Balcony Area	568 Sq.ft		53 Sq.m
Total Area	1344 Sq.ft		125 Sq.m



All drawings and dimensions are approximate. Drawings are not to scale and are subject to change without notice. The developer reserves the right to make revisions. The units are measured at typical floor in the building and columns may vary in size depending on the floor level. The furnishings and accessories shown are for representation only. The length and width of the Unit and balcony varies depending on which floor and which orientation the unit is located within the building to comply with the building authority regulations. Apartment unit sizes may vary. Actual unit sizes will be reflected on the Sales and Purchase Agreement.



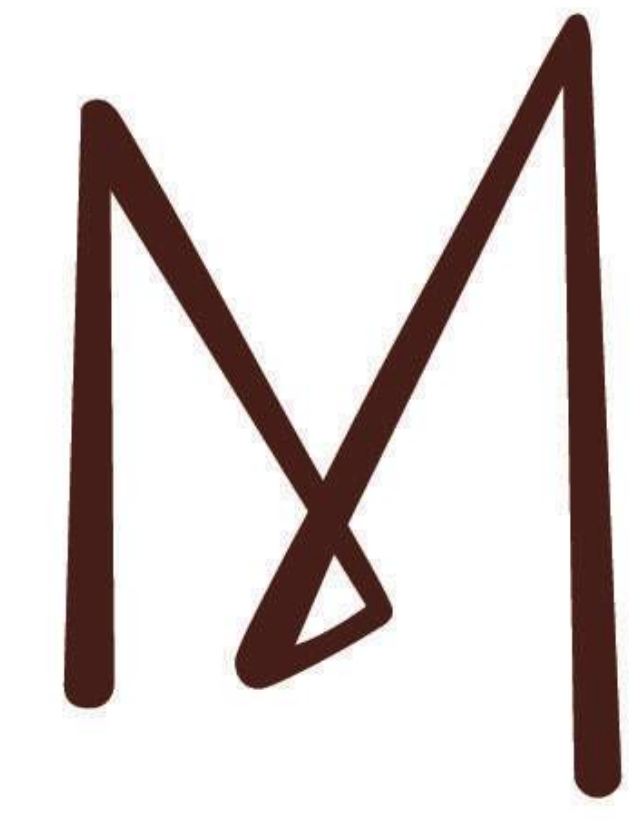
2 Bedroom Apartment Type D1



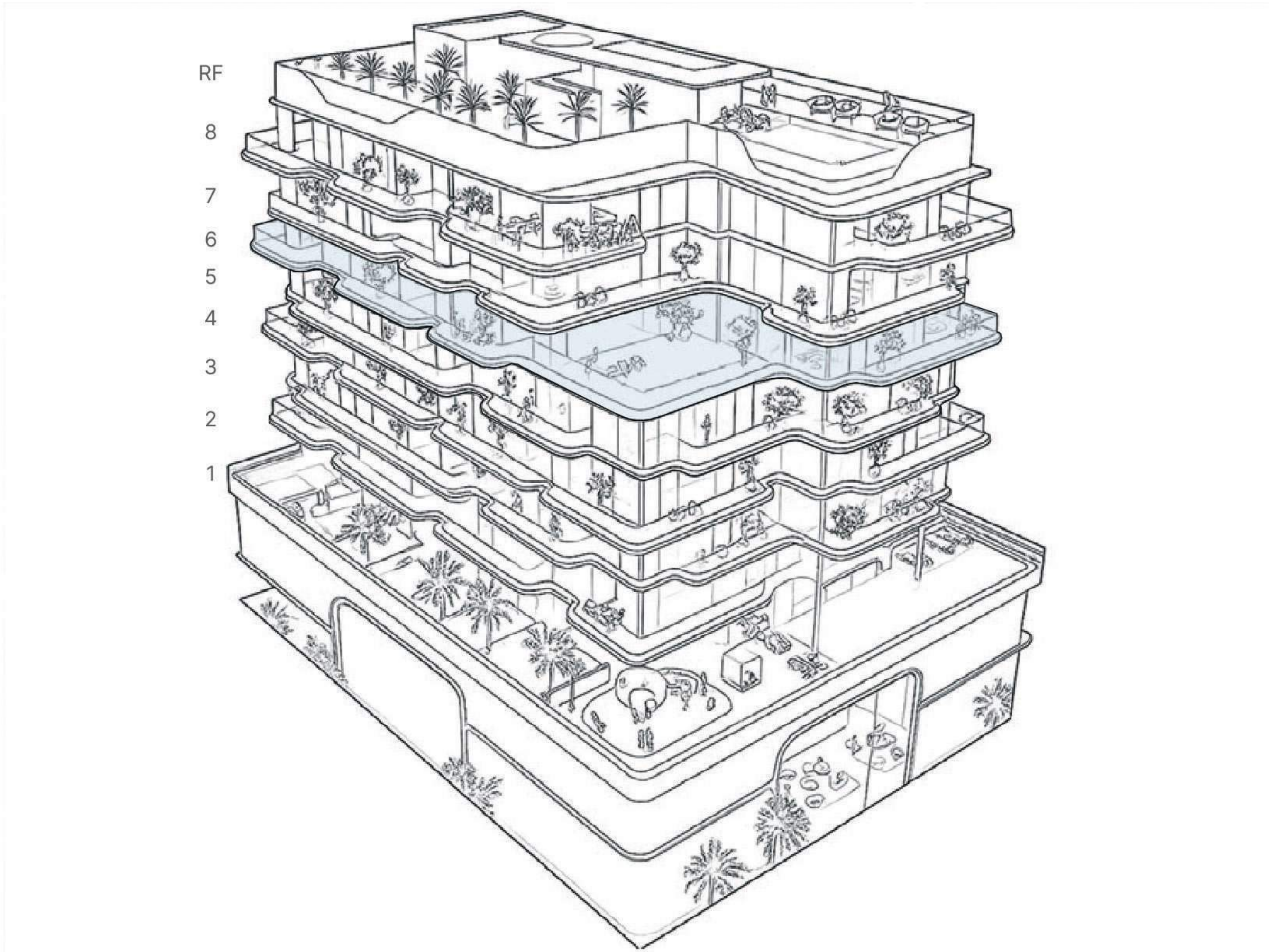
Unit No	05 & 06	Floor No	2
Suite Area	1011 Sq.ft	94 Sq.m	
Balcony Area	358/331 Sq.ft	33/31 Sq.m	
Total Area	1369/1342 Sq.ft	127/125 Sq.m	



All drawings and dimensions are approximate. Drawings are not to scale and are subject to change without notice. The developer reserves the right to make revisions. The units are measured at typical floor in the building and columns may vary in size depending on the floor level. The furnishings and accessories shown are for representation only. The length and width of the Unit and balcony varies depending on which floor and which orientation the unit is located within the building to comply with the building authority regulations. Apartment unit sizes may vary. Actual unit sizes will be reflected on the Sales and Purchase Agreement.



3 Bedroom Apartment Type B1



Unit No	05	Floor No	6
Suite Area	1546 Sq.ft	144 Sq.m	
Balcony Area	957 Sq.ft	89 Sq.m	
Total Area	2503 Sq.ft	233 Sq.m	

All drawings and dimensions are approximate. Drawings are not to scale and are subject to change without notice. The developer reserves the right to make revisions. The units are measured at typical floor in the building and columns may vary in size depending on the floor level. The furnishings and accessories shown are for representation only. The length and width of the Unit and balcony varies depending on which floor and which orientation the unit is located within the building to comply with the building authority regulations. Apartment unit sizes may vary. Actual unit sizes will be reflected on the Sales and Purchase Agreement.



Meriden

B E A C H R E S I D E N C E S

DEVELOPED BY

GREEN
HORIZON
DEVELOPMENTS

POWERED BY

refine