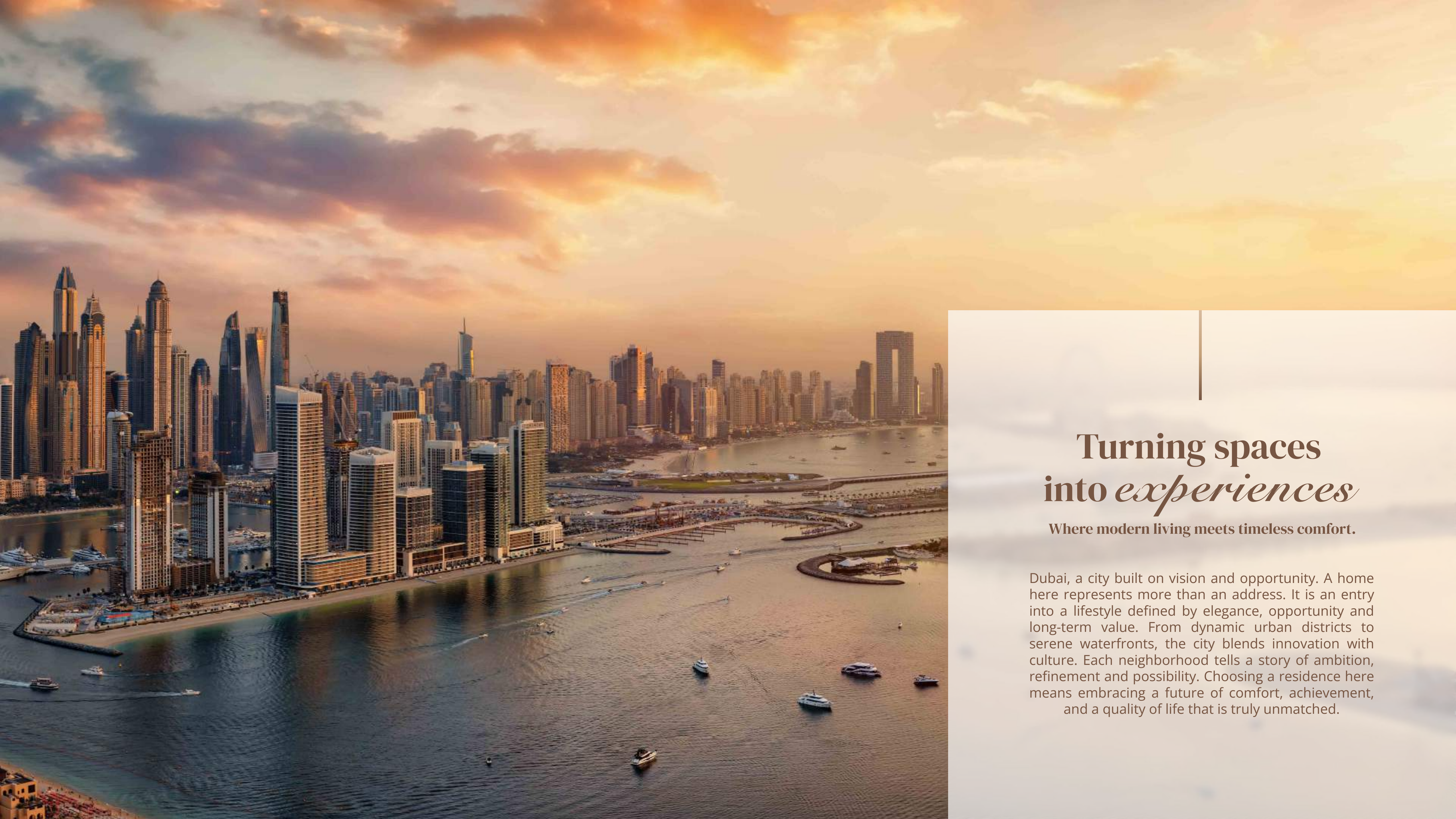




BG
BARARI GATE

by ADE





Turning spaces into *experiences*

Where modern living meets timeless comfort.

Dubai, a city built on vision and opportunity. A home here represents more than an address. It is an entry into a lifestyle defined by elegance, opportunity and long-term value. From dynamic urban districts to serene waterfronts, the city blends innovation with culture. Each neighborhood tells a story of ambition, refinement and possibility. Choosing a residence here means embracing a future of comfort, achievement, and a quality of life that is truly unmatched.





BG BARARI GATE

by ADE

A contemporary residential development designed to elevate everyday living through balanced design and functionality. With refined, practical architecture, thoughtfully planned layouts, and community-focused amenities, Barari Gate by ADE brings together comfort, quality, and long-term value.



Units

- Studios
- 1-Bedroom
- 2-Bedroom + Maid
- 2-Bedroom + Maid + Pool
- 3-Bedroom + Maid + Pool
- Retail Shops

Key Amenities

- Indoor & Outdoor Gym
- Indoor & Outdoor Kid's Play Areas
- Yoga Area
- Sauna & Jacuzzi
- Business Center
- Infinity Pool & Kid's Pool
- Basketball & Padel Court
- Jogging & Bicycle Track
- Billiards & PingPong Table

Location

Majan
Dubai, United Arab Emirates

Building Elevation

Ground
Podium
10 floors
Roof

Estimated Completion Date

Q4 - 2028

Experience life in *Majan*

Located in Majan, Wadi Al Safa 3, Barari Gate by ADE sits in a growing residential community designed for balance, accessibility and everyday ease. A family-friendly environment and well-planned infrastructure, the area offers a calmer, greener alternative to the city's core. With nearby schools, parks, retail destinations, and healthcare facilities.



Connection points

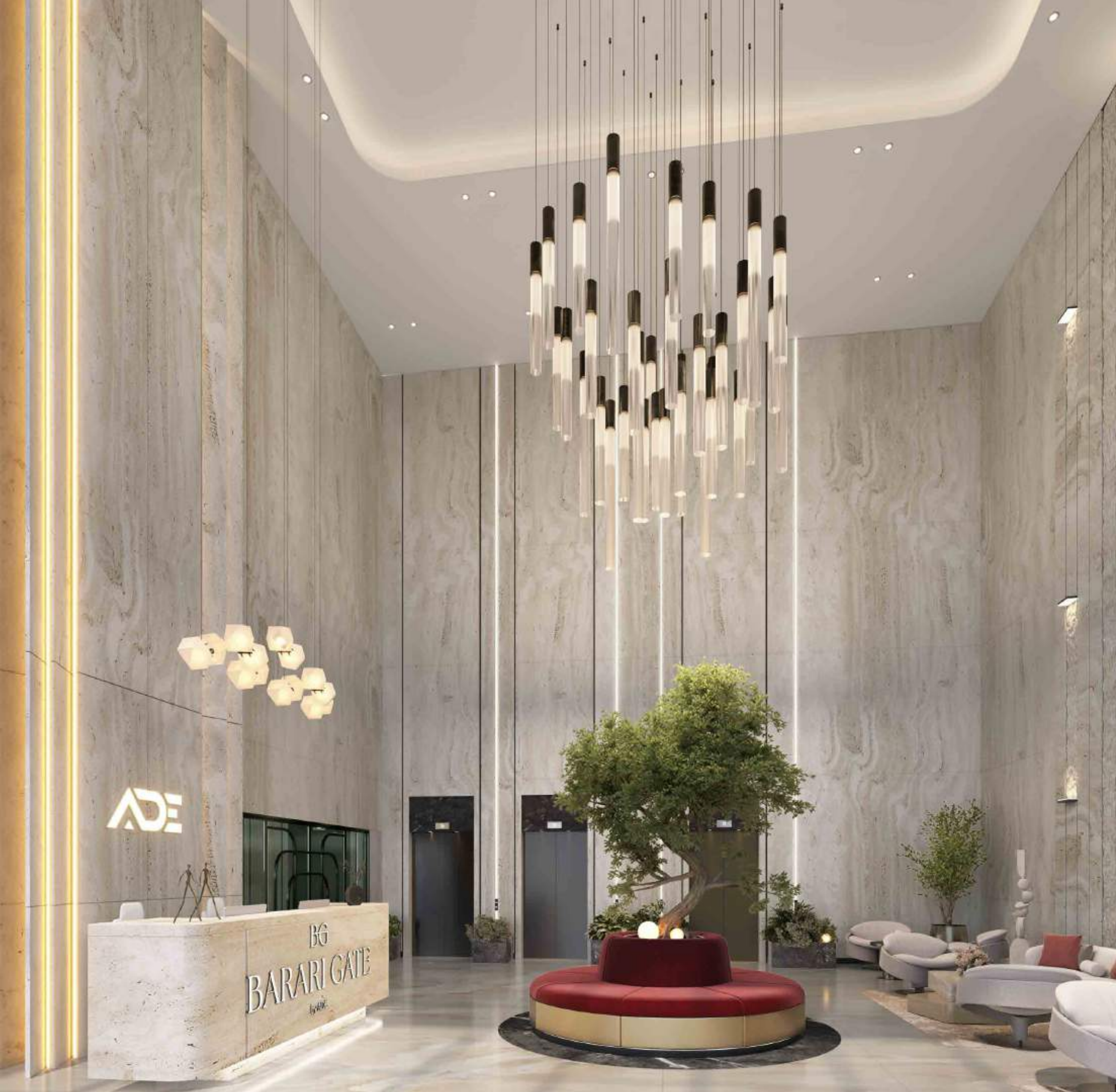
- ① Downtown Dubai & Burj Khalifa – 20 min
- ② Museum of the Future – 20 min
- ③ Dubai International Airport (DXB) – 20 min
- ④ Al Maktoum International Airport – 25 min
- ⑤ The Palm Jumeirah – 25 min
- ⑥ Burj Al Arab – 20 min
- ⑦ Dubai Marina – 25 min
- ⑧ Global Village – 5 min
- ⑨ IMG Worlds of Adventure – 8 min
- ⑩ Al Barari – 5 min
- ⑪ Dubai Hills Mall – 10 min
- ⑫ Dubai Miracle Garden – 10 min



A close-up, profile view of a woman with long, dark, wavy hair. She is looking out of a window, with soft, natural light illuminating her face. She has a gentle smile and is wearing a light-colored, possibly white, button-down shirt. The background is a blurred view of a window with light-colored curtains.

Step Into *Refined Living*

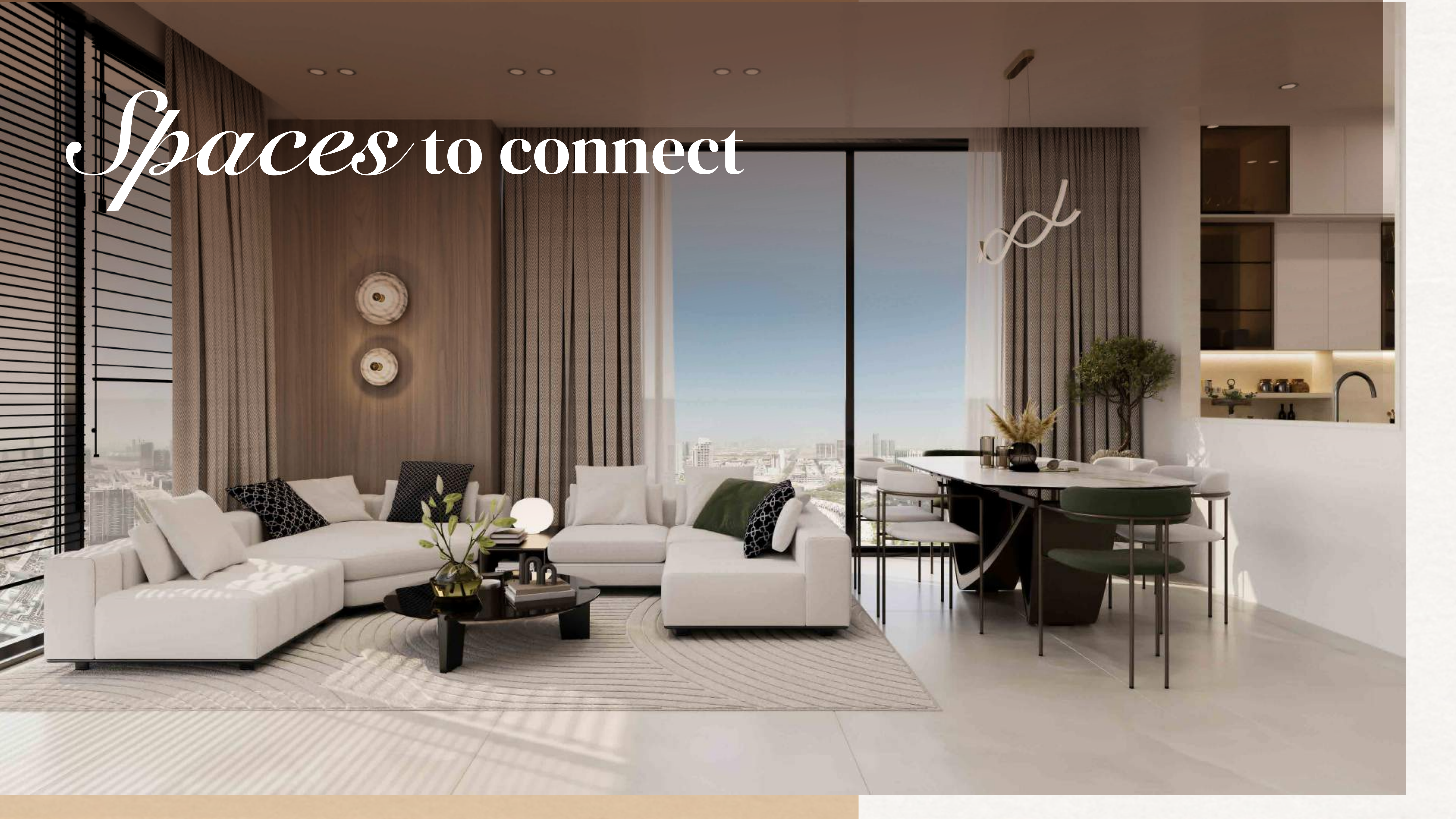
Barari Gate introduces a new standard of modern residential living. From the moment you arrive, the design, ambience, and attention to detail convey sophistication and comfort. Set within the family-friendly community of Majan, the property seamlessly combines connectivity, tranquility, and lifestyle, creating a residence that is as inviting as it is inspiring.



Welcoming *entrance*

Main Lobby Area

The lobby serves as the building's first welcoming, combining elegance and functionality. Designed with high ceilings, natural light, and premium finishes, it provides a comfortable and inviting space for residents and guests.



Spaces to connect



Bright interiors

Living Rooms

Premium finishes, natural light, and functional layouts ensure each living space feels both stylish and inviting, reflecting the quality found throughout the property.



Modern *culinary* spaces

Kitchen

The kitchens are designed with both style and functionality in mind. Equipped with premium finishes, practical layouts, and ample storage, they provide an efficient and elegant space for everyday cooking and entertaining.

Elegant suites



Bedrooms

The bedrooms are designed as personal sanctuaries, combining comfort, space, and natural light. Finished with premium materials, they create a restful environment that adapts to the needs of every resident.





Private scape

Bedrooms

Layouts vary to suit all unit types, from studios and one-bedroom apartments to two- and three-bedroom homes, to bedrooms where you can enjoy your own private pool.



Refined everyday *comfort*

Bathrooms

The bathrooms are designed to balance practicality with elegance. Finished with quality materials and clean detailing, they offer a calm and functional space for daily routines. Thoughtful layouts, refined fittings, and a neutral palette create a sense of comfort and continuity across all unit types.

Spaces designed to *enjoy*

Indoor & Outdoor Amenities

A diverse range of shared spaces has been planned to support movement, relaxation, and social interaction. Both indoor and outdoor amenities are seamlessly integrated into the building, offering residents multiple ways to unwind, stay active, or connect with their surroundings throughout the day.



Indoor & Outdoor
Gym



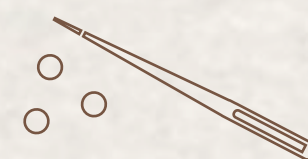
Indoor & Outdoor
Kid's Play Area



Yoga area



Sauna



Billiard and Ping
Pong Area



Business Center



Infinity
Swimming Pool



Padel Court



Basketball Court

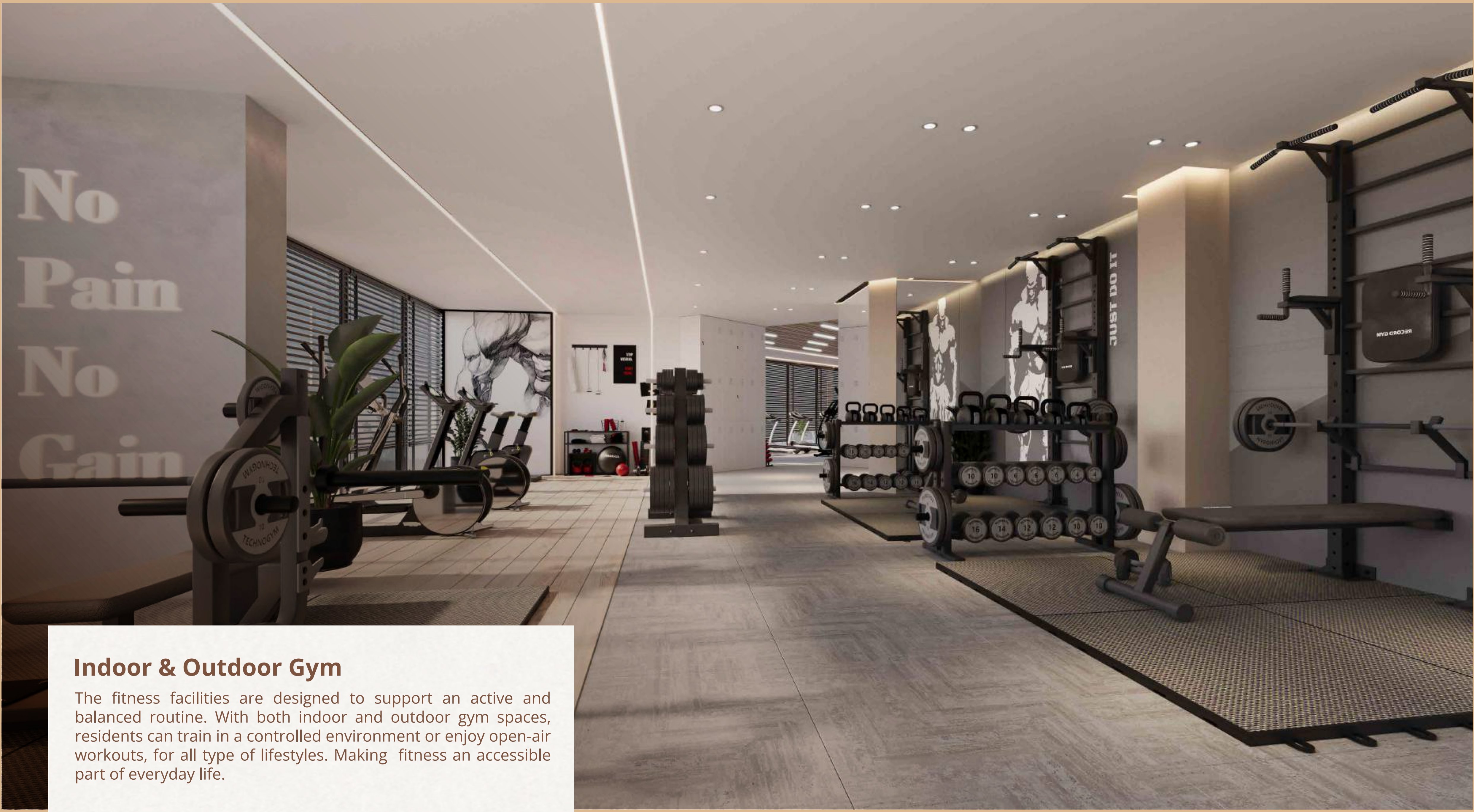


Indoor & Outdoor
Common Areas





Active
fitness
spaces



Indoor & Outdoor Gym

The fitness facilities are designed to support an active and balanced routine. With both indoor and outdoor gym spaces, residents can train in a controlled environment or enjoy open-air workouts, for all type of lifestyles. Making fitness an accessible part of everyday life.



Safe to play

Indoor Kids Play Area

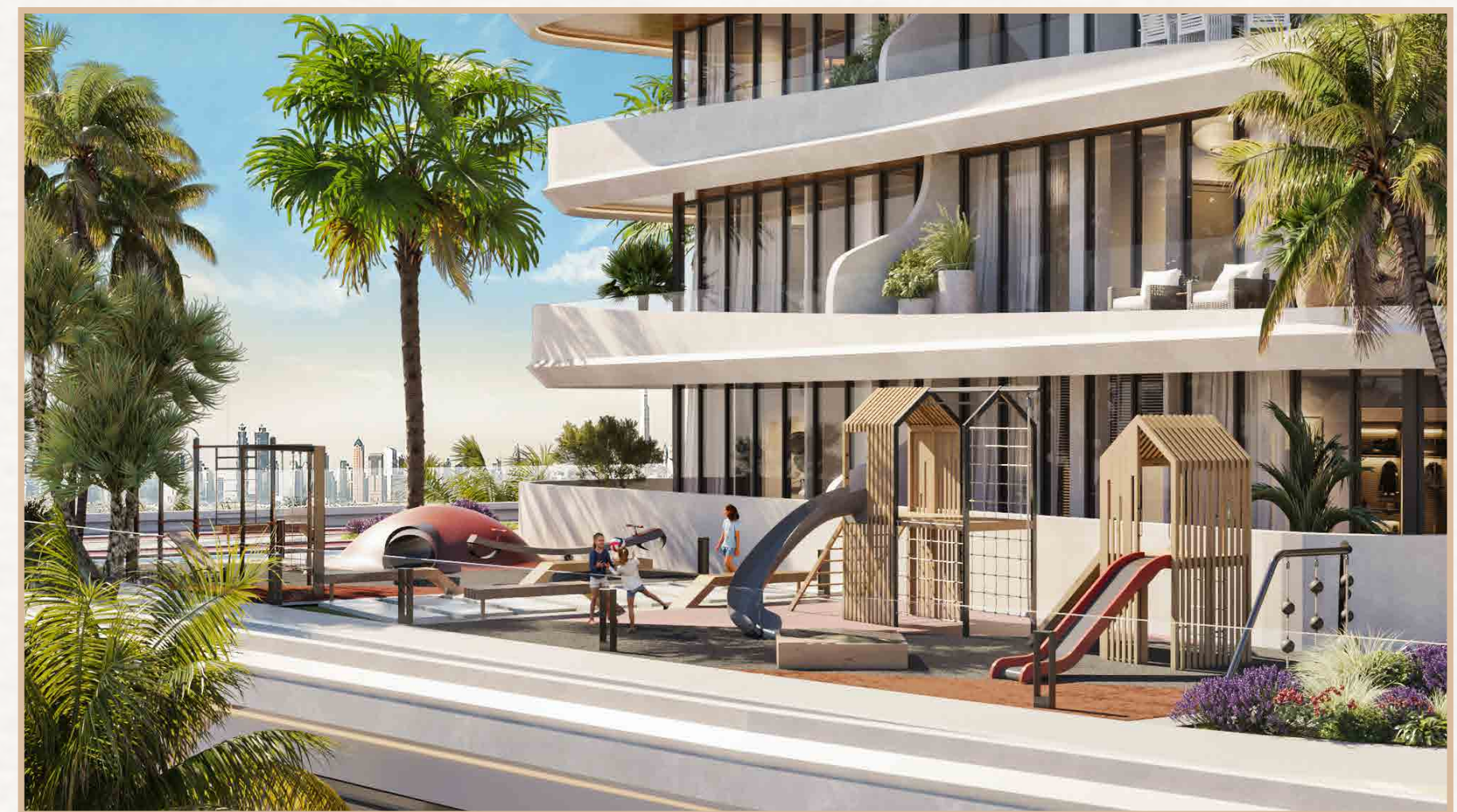
The kids' play areas are planned to support safe and active play. These dedicated areas add everyday convenience for families, creating spaces where children can play freely within the community.



Families in mind

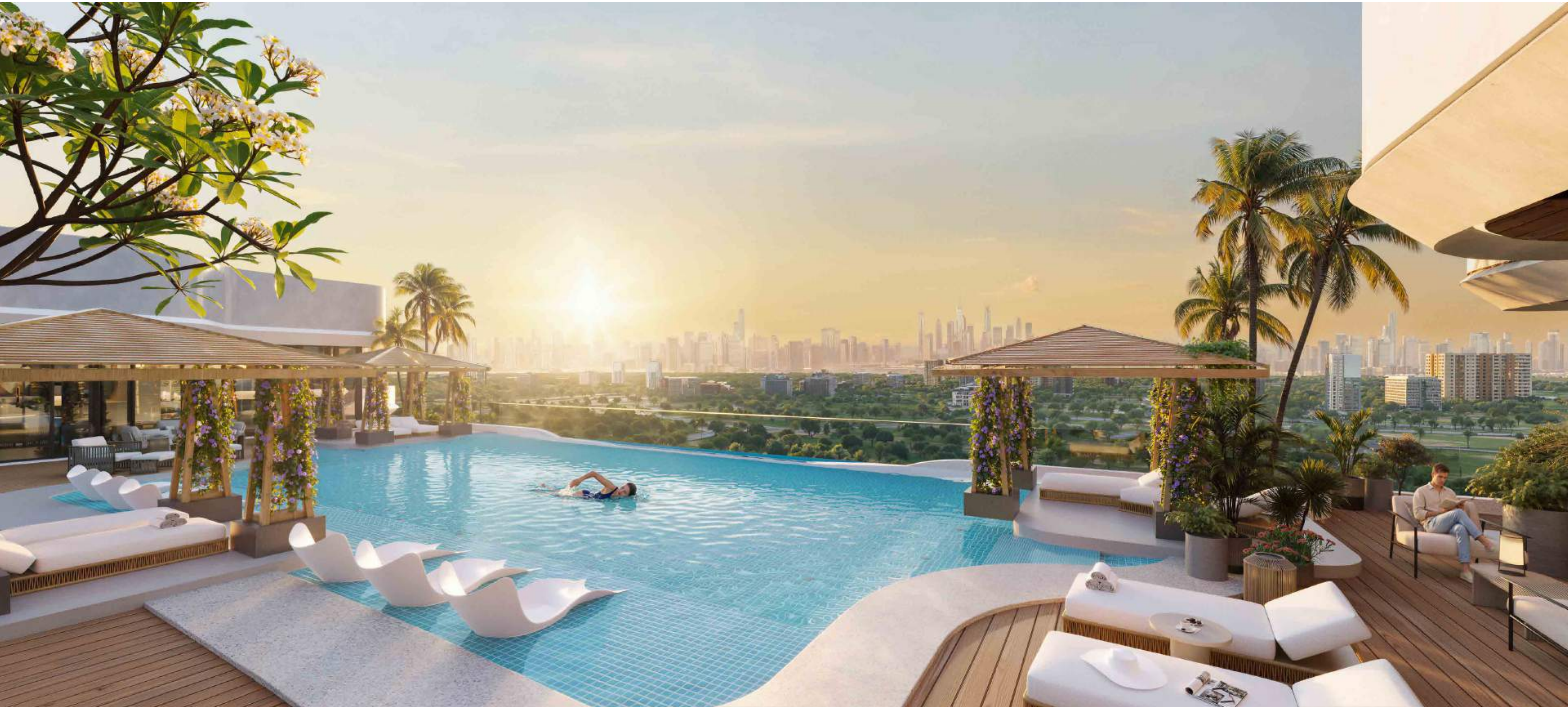
Outdoor Kids Play Area

Set within the community, the outdoor kids' play area offers families a convenient space where children can play freely while enjoying the outdoors.





Pool
escape



Serene outdoor

Infinity Swimming pool & Kid's Swimming Pool

Designed with surrounding sunbeds and open views, the infinity pool provides residents with a comfortable environment to enjoy moments of pause throughout the day. As well as a dedicated kid's swimming pool that provides a safe and inviting environment for little ones to play.

Thermal *retreat*

Sauna & Jacuzzi

Designed for relaxation and recovery, the sauna and jacuzzi offer a quiet retreat that enhances the building's wellness-focused lifestyle.





Wellness spaces

Yoga Area

Designed for yoga and mindful practice, this serene space encourages residents to slow down, recharge, and focus on balance and well-being.

Where work *flows*

Business Center

Designed to support productivity and flexibility, the business areas provide a comfortable setting for focused work and informal meetings. Thoughtfully planned for everyday convenience, these spaces allow residents to balance work and life with ease.



Spaces to *Connect*

Billiards & PingPong (Social Space)

A relaxed social setting, this space brings residents together through billiards and table tennis. It encourages interaction, leisure, and shared moments, adding a lively social layer to everyday community living.



Keep it *moving*

Bicycle & Jogging track

The jogging and bicycle tracks support an active lifestyle. These dedicated paths encourage daily movement, outdoor exercise, and a connection between fitness and everyday living.



Purpose built *active* courts

Basketball & Padel Court

The courts are designed to encourage an active, healthy lifestyle. Conveniently integrated within the building, they offer a well-finished space for quick games, training, and everyday movement, supporting balance and wellbeing without leaving home.



The background of the entire image is a blurred photograph of a modern interior space, likely a hotel lobby or a high-end apartment. In the foreground, on the right side, is a close-up of a smart door lock mounted on a dark wood door. The lock has a sleek, metallic finish and a small digital display at the top. The background shows a bright, airy room with large windows, a white sofa, and a marble floor, creating a sense of luxury and comfort.

Effortless *Smart Living*

Easily manage lighting, climate, security, and curtains through integrated smart home features. This intuitive system enhances everyday comfort and convenience, allowing residents to enjoy greater control and a more seamless living experience.

STUDIO

STARTING FROM

AED 670,000

SIZE RANGE

438-536 Sqft



1-BEDROOM

STARTING FROM

AED 1,188,000

SIZE RANGE

775-900 Sqft



2-BEDROOM + MAID

STARTING FROM	AED 1,700,000
SIZE RANGE	1,560 – 1,900 Sqft



3-BEDROOM + MAID + POOL

STARTING FROM	AED 2,650,000
SIZE RANGE	2,527 – 3,840 Sqft



A man with a beard, wearing a white thobe and a white ghutra with a black agal, is seated at a dark wooden desk. He is leaning forward, focused on writing with a pen on a piece of paper. His left hand rests on another document. The background features a dark wood panel and a shelf with books and a decorative object.

“

As CEO of ADE, I am proud to continue our family's 70-year journey of transforming Dubai's real estate landscape. Our legacy transcends constructing buildings, we create living experiences that inspire and empower communities.

We invite you to be part of our continuing story: a story of trust, quality, and visionary living in the heart of Dubai.

- Mohammed Ahmad Al Dallal